

# CONSTRUCTION NOTICE

## Crossing Improvements Coming Soon!

### Roxbury St and Olson Pl SW



In March 2020, the Seattle Department of Transportation (SDOT) closed the West Seattle High-Rise Bridge to traffic in the interest of public safety due to the accelerated growth of new and existing structural cracks. Shortly after, we launched Reconnect West Seattle to support neighborhoods impacted by the closure — providing improvements to calm traffic and improve pedestrian mobility and neighborhood livability.  
Learn about an upcoming improvement for your neighborhood inside.



**Seattle**  
Department of  
Transportation

PRSR STD  
US Postage  
PAID  
Seattle, WA  
Permit No. 2871

**Seattle**  
Department of  
Transportation



PO Box 34996  
Seattle, WA 98124-4996

## Crossing Improvements coming to SW Roxbury St and Olson Pl SW

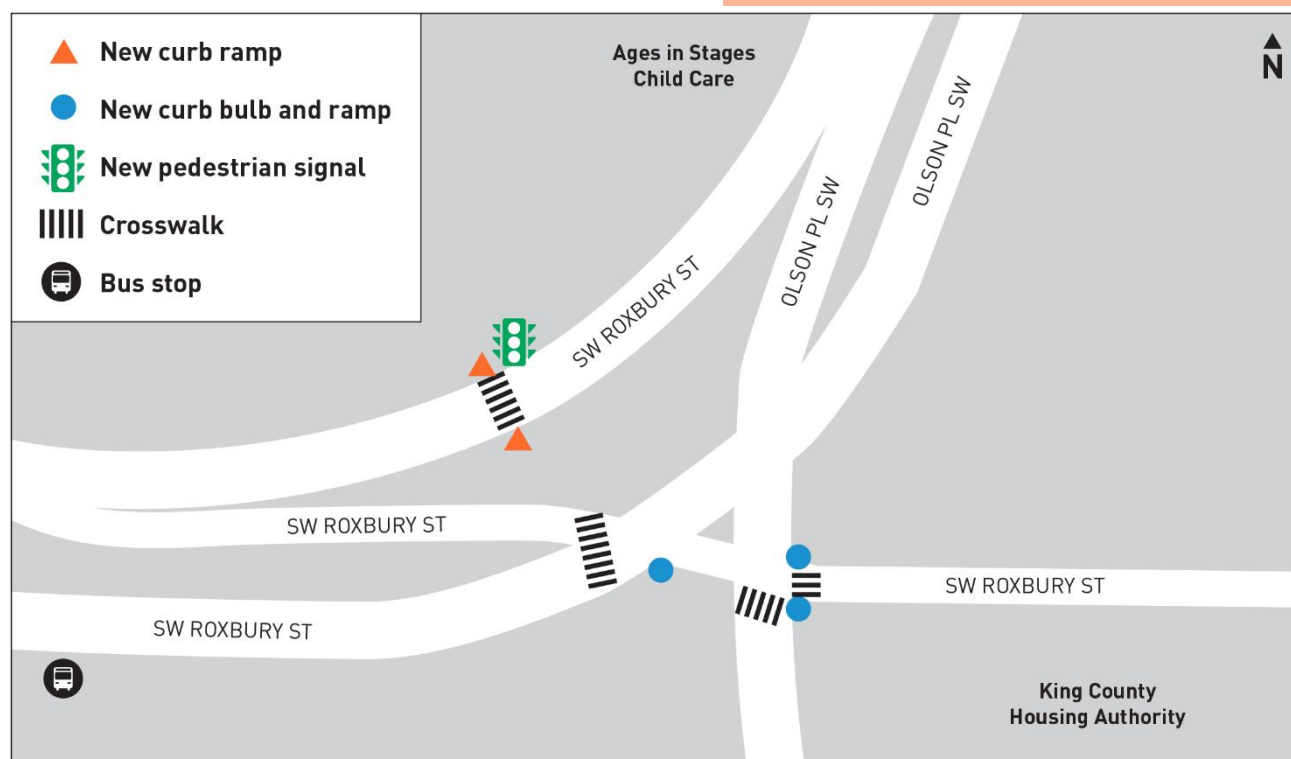
We're making safety improvements for people walking and rolling at the SW Roxbury St and Olson Pl SW intersection.

This work will include:

- A new pedestrian signal on the northwest side of the intersection
- Shifting the crosswalks across SW Roxbury St so they're better aligned
- Curb bulbs that extend the sidewalk corners for people walking on the south side of the intersection
- Curb ramps for improved ADA (Americans with Disabilities Act) accessibility

### WHAT TO EXPECT DURING CONSTRUCTION

- Work will begin as soon as May and last approximately 6 months.
- Work will occur on weekdays between 9 AM and 3 PM.
- Shifting lane closures with flaggers by phases.
- Parking may not be allowed during construction.
- Crosswalk re-routing may be in place.
- We will notify neighbors of temporary driveway closures during the work.
- Typical construction equipment, materials, noise, dust, vibration and activity in the work area.



Project map

Translation and Interpretation services available upon request: (206) 400-7511.

Dịch và thông dịch sẵn sàng nếu có sự yêu cầu (206) 400-7511.

Servicios de traducción e interpretación disponibles bajo petición (206) 400-7511.

Turjubaanka waxaa lagu heli karaa codsasho a (206) 400-7511.

요청하시면 번역이나 통역을 제공해드립니다 (206) 400-7511.

如果您需要此信息翻譯成中文 請致電 (206) 400-7511.

Tagalog mangyari lamang na tumawag sa (206) 400-7511.

የዚህን መረጃ ትርጉም ከፈለጉ፣ በዚህ ስልክ ቁጥር ይደውሉ፡ (206) 400-7511.

សំណួរឬការបកប្រែនិងការបកប្រែភាសាមានតាមការស្នើសុំតាមរយៈ លេខ : (២០៦) ៤០០-៧៥១១.

### CONTACT

[WestSeattleBridge@seattle.gov](mailto:WestSeattleBridge@seattle.gov)

(206) 400-7511