

West Marginal Way collisions and speeds

Bradley Topol, SDOT

June 24, 2021



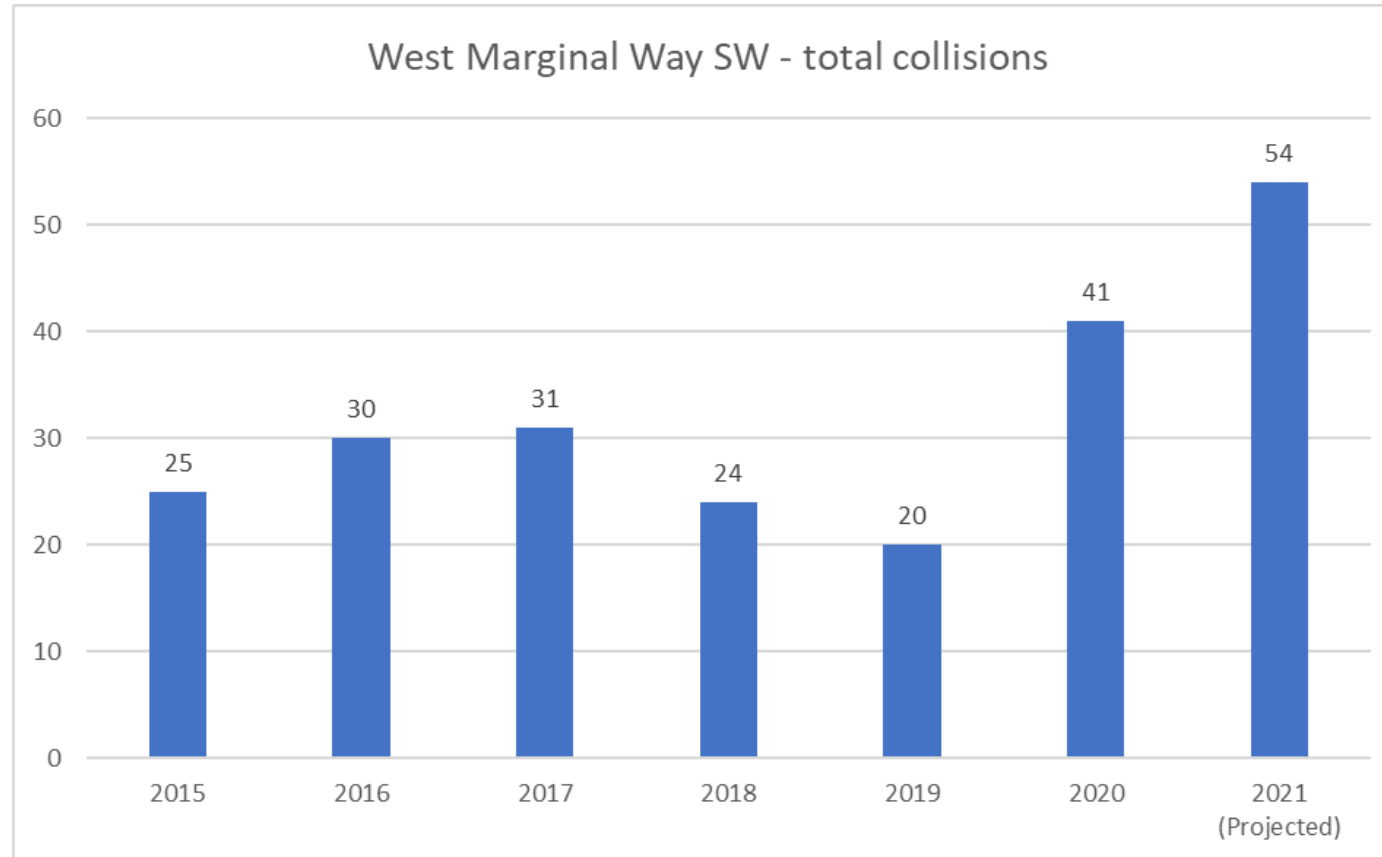
City of Seattle

Review of speeds and collisions on West Marginal Way

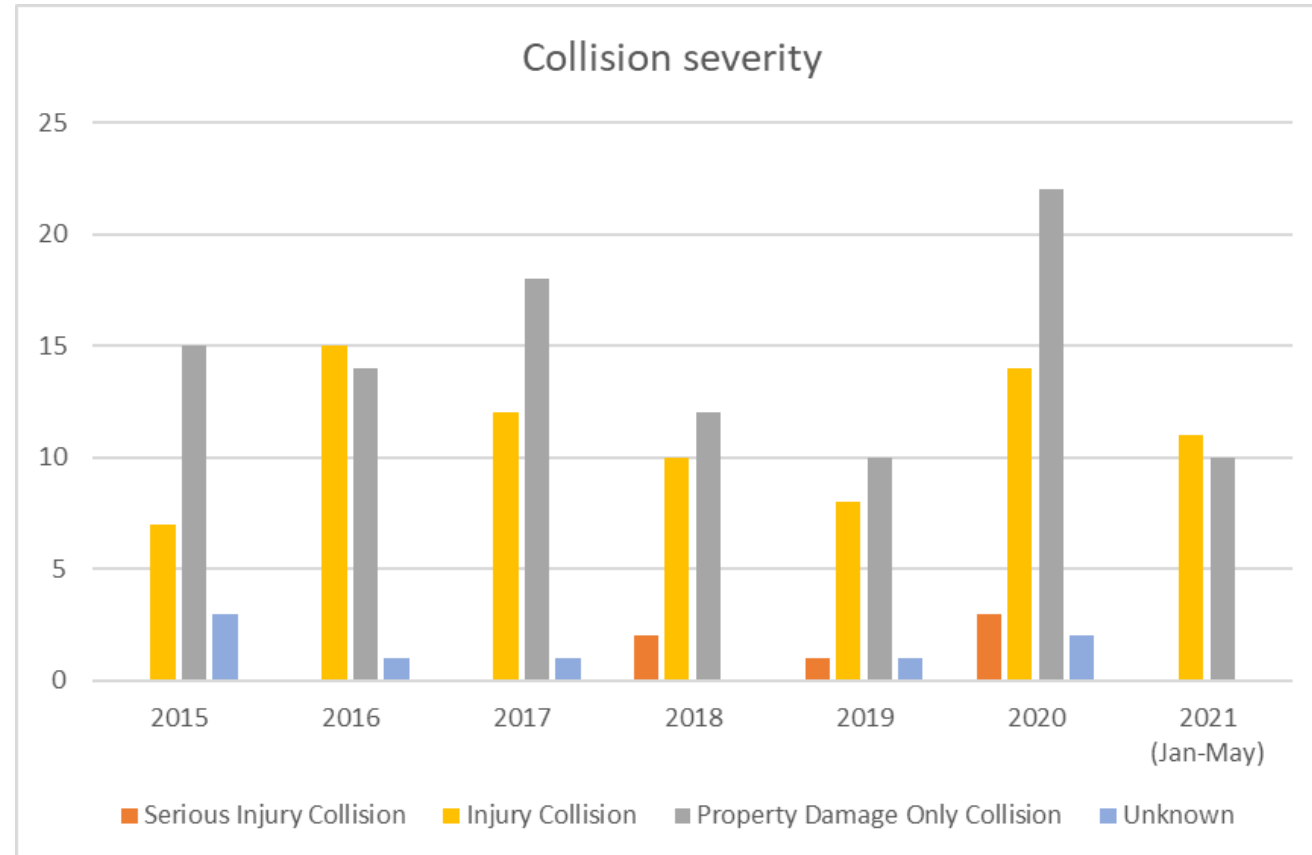
- Reviewed area from Chelan 5-way to Highland Park Way
- Data from January 2015 to May 2021



West Marginal Way collisions

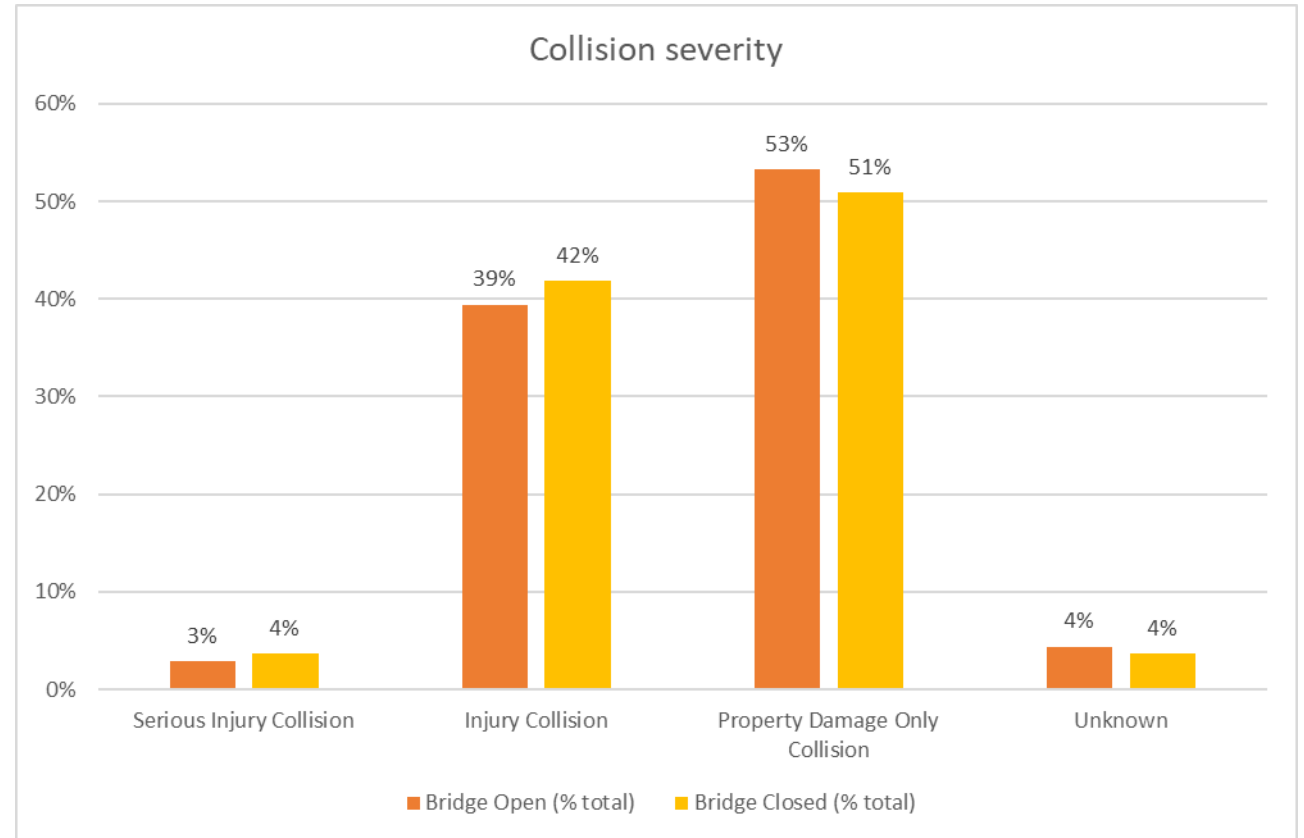


West Marginal Way collisions

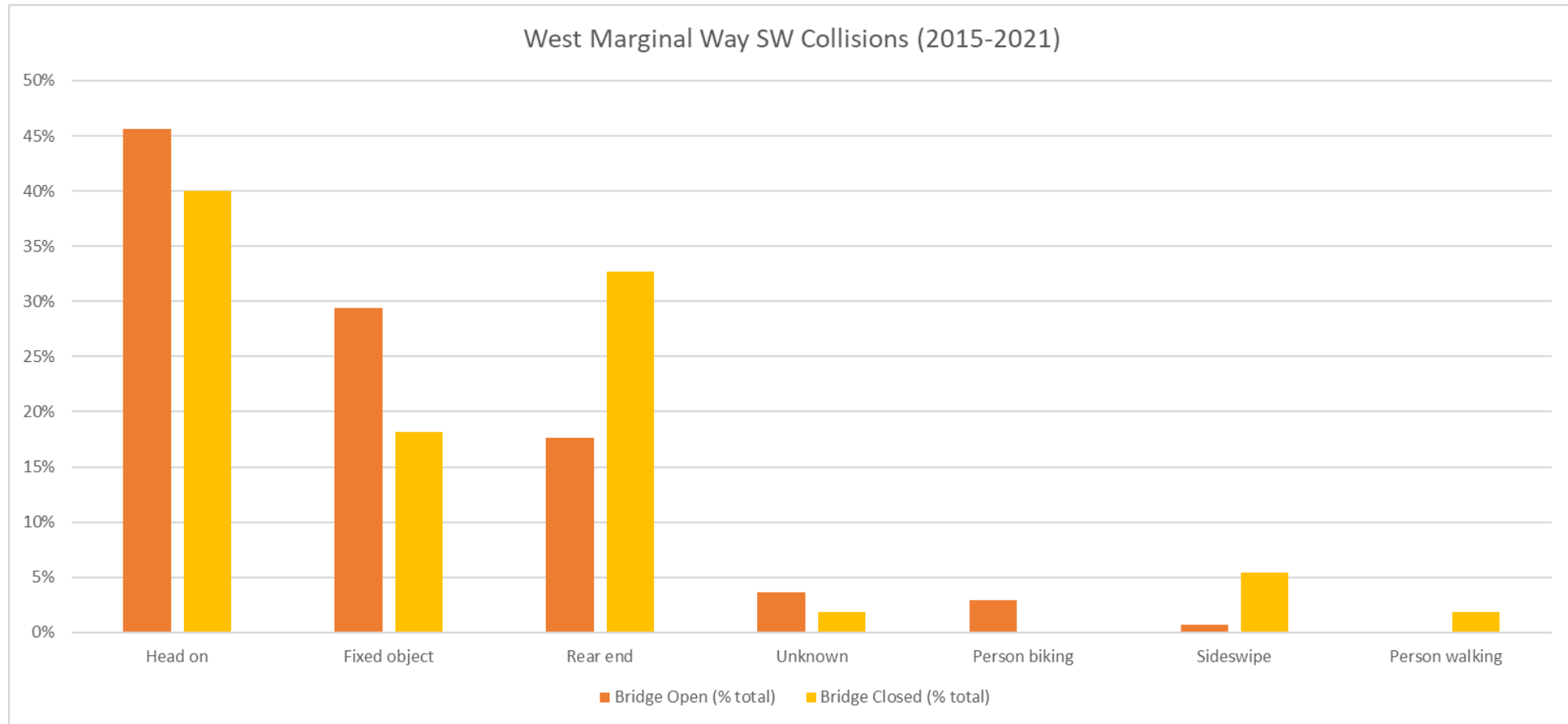


West Marginal Way collisions

- Collision severity essentially remains the same after the West Seattle High-Rise Bridge closure

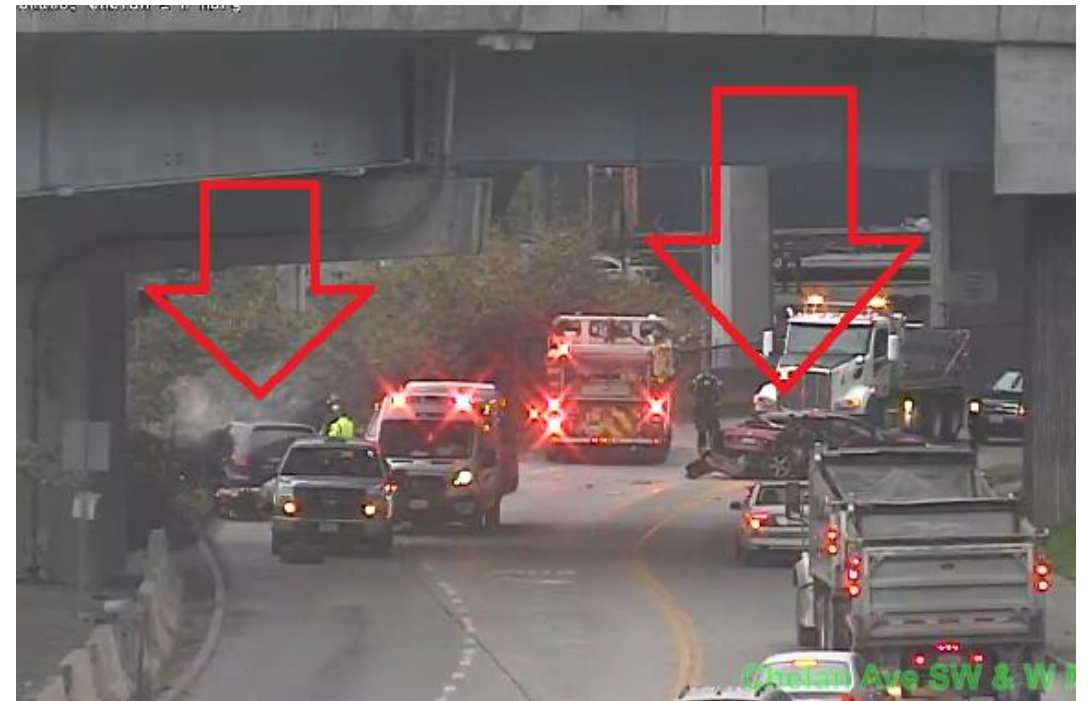


West Marginal Way collisions



Where did we see a change in collisions (Pre vs Post closure)

- Collisions across all intersections increased 136%
 - Highland Park Way increased 325% from about 3 collisions a year to 14 collisions a year
 - Chelan 5-way increased 90% from just over 1 collision a year to 2 collisions a year
- Collisions midblock increased 11%
 - Biggest increases were in the southern most mile (closest to Highland Park Way) with an increase of 50% from about 8 collisions a year to 12 collisions a year



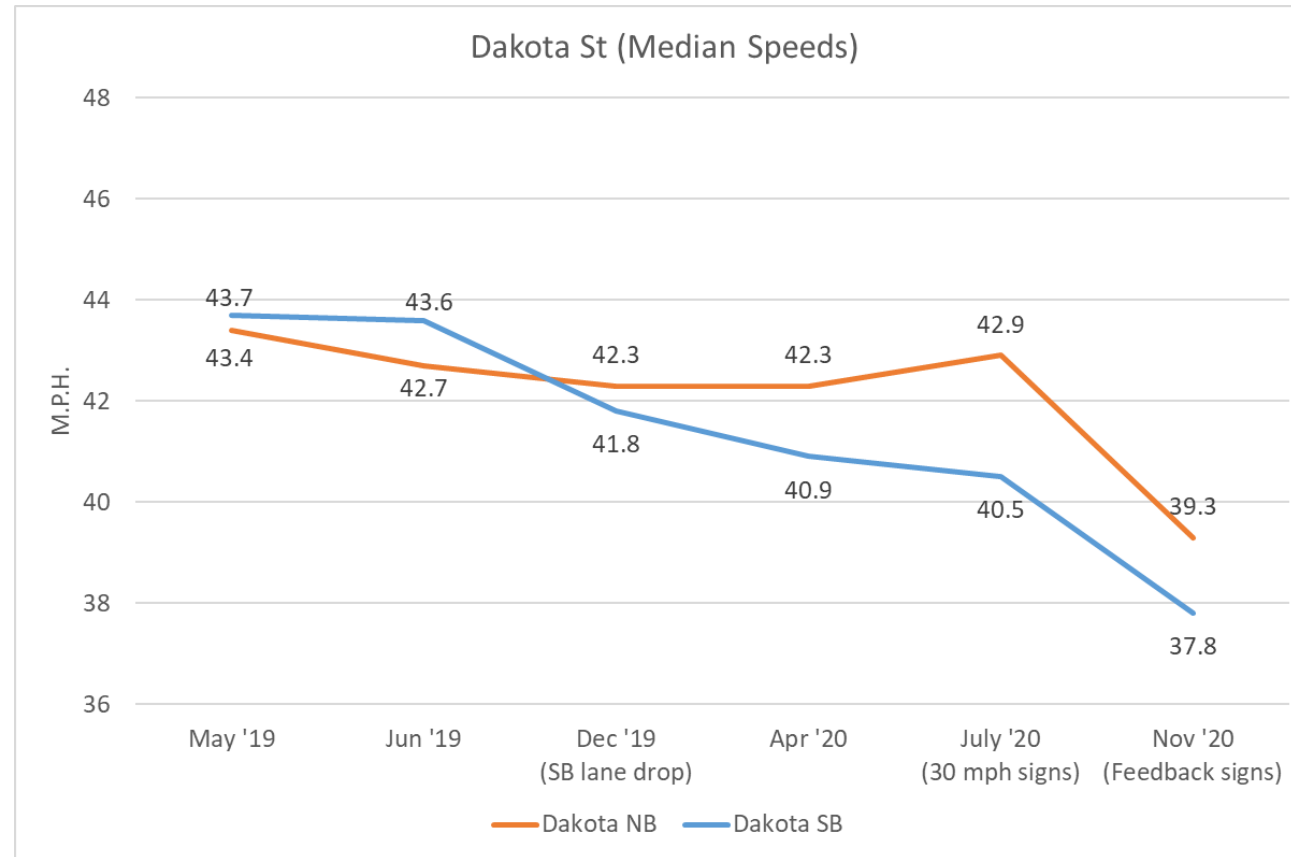
West Marginal Way speeds

Changes that have influenced speeds

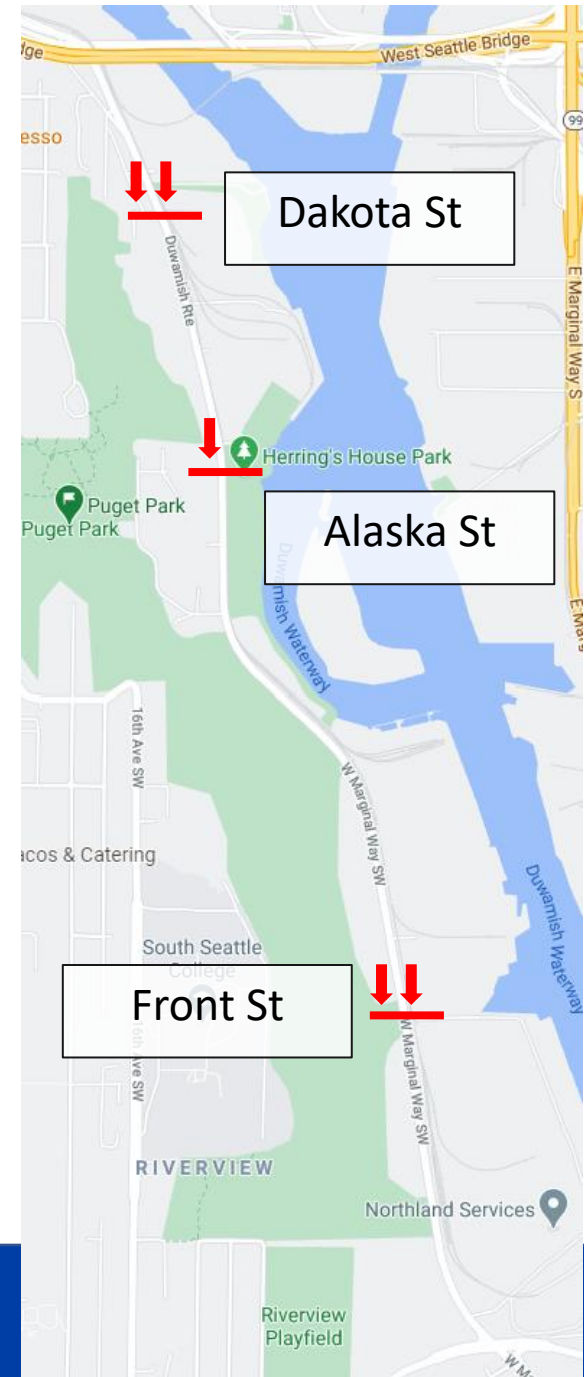
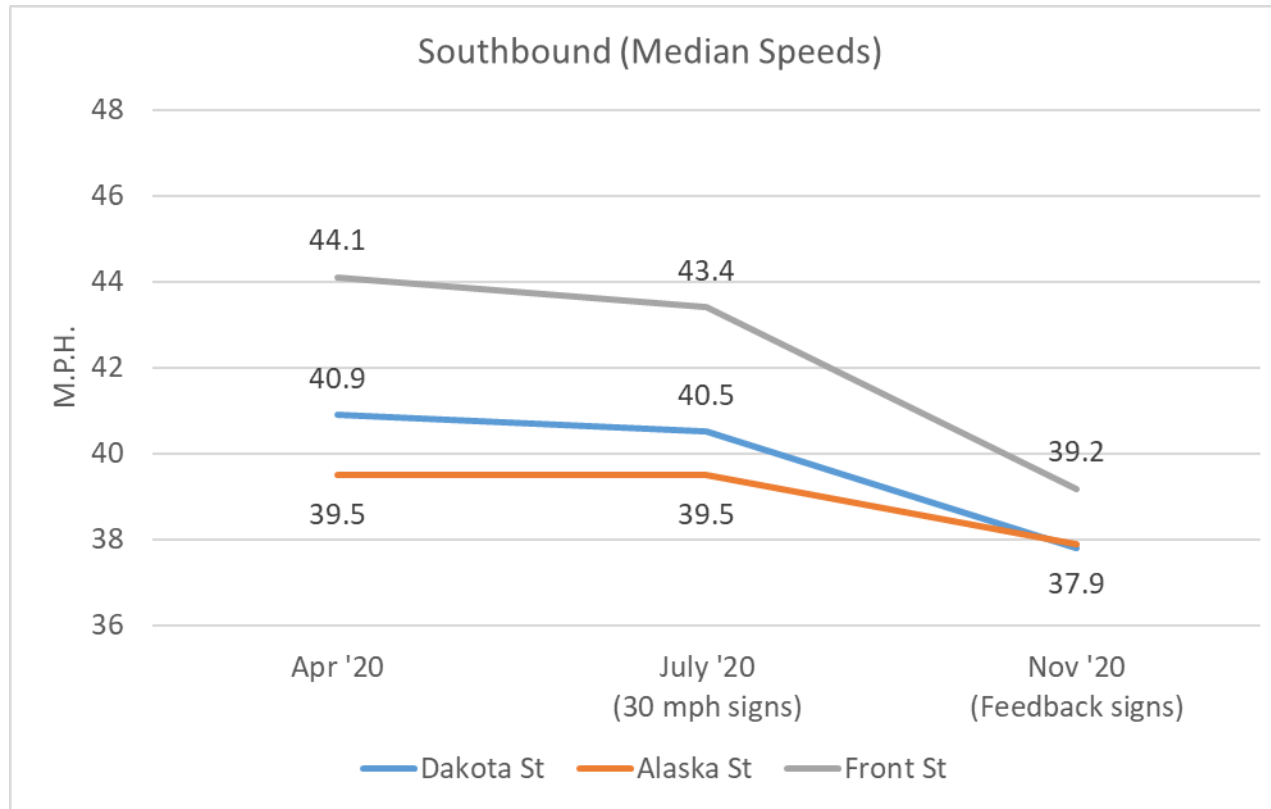
- October 2019: Southbound lane drop installed at Duwamish Longhouse
- May 2020: Speed limit signs changed from 40 mph to 30 mph
- September 2020: 6 radar feedback signs installed



West Marginal Way speeds



West Marginal Way speeds





Questions?