

City of Seattle Vaccination Efforts

Data Included Across the Lumen Field Event Center, Rainier Beach, West Seattle, and Mobile Vaccination Teams



City of Seattle

Delivering on Our Equitable Vaccination Plan

- Working with Public Health – Seattle & King County, Seattle created an ambitious plan to equitably vaccinate our residents and workers.
- The Seattle Fire Department became the first EMS agency in Washington state to become a vaccine provider.
- Seattle advocated to philanthropy, DOH, HHS, and the White House for more resources for our Community Health Centers, mobile teams, Lumen, and community hubs.
- Every step of the way, Seattle has pursued innovative strategies and partnerships to vaccinate our residents and workers.



Fixed Vaccination Site Timeline

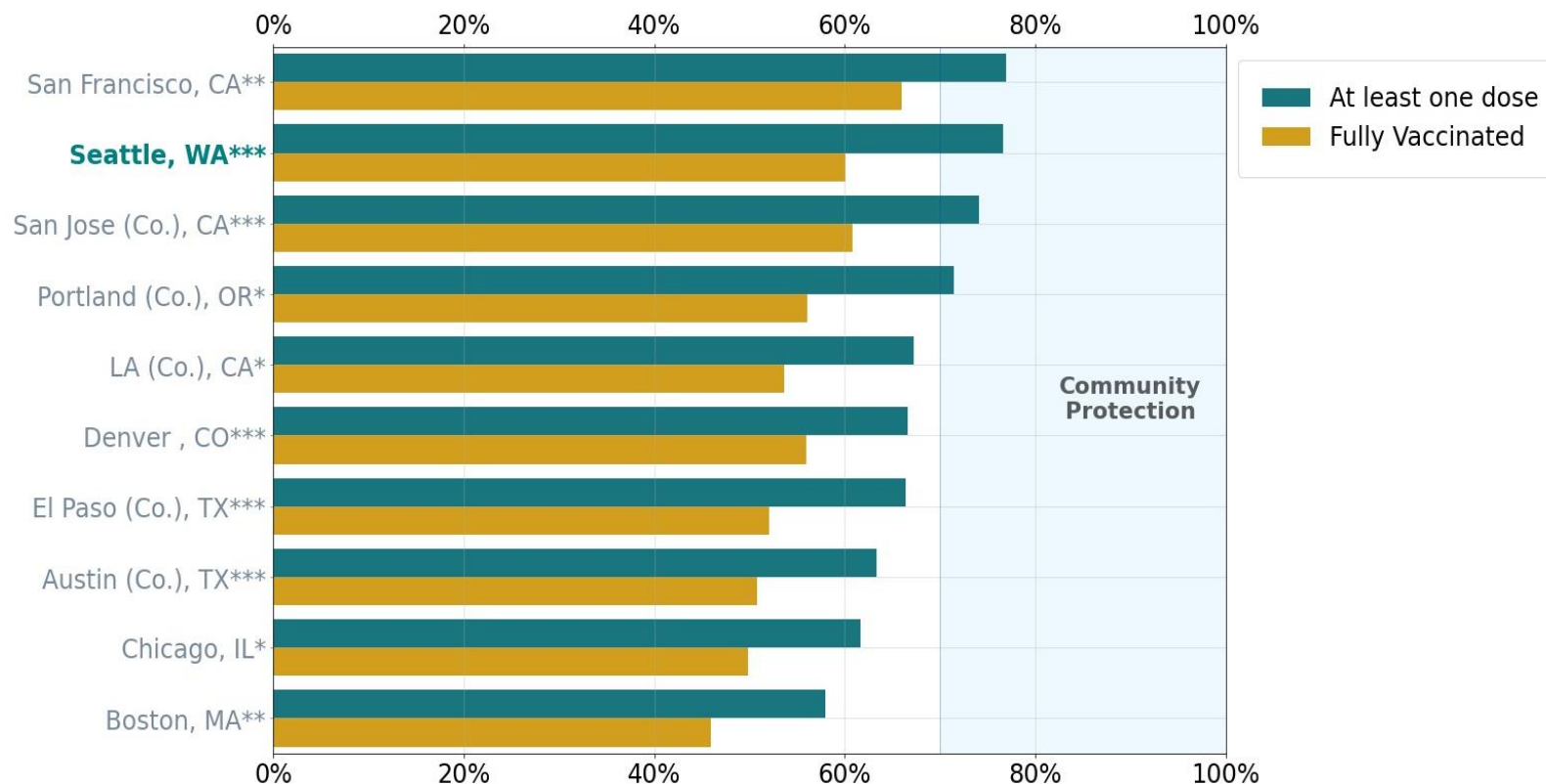
- Lumen Field Event Center
 - Opened: March 13, 2021
 - Closing: June 12, 2021
- Rainier Beach Vaccination Hub
 - Opened: February 22, 2021
 - Closing: June 23, 2021
- West Seattle Vaccination Hub
 - Opened: February 17, 2021
 - Closing: June 9, 2021
- North Seattle Vaccination Hub
 - Opened: March 31, 2021
 - Closing: June 4, 2021
 - *N.B.: Data from this site is not included further in the presentation, as the site is operated by Seattle Visiting Nurse Association, not the City of Seattle*



Vaccinations Across Modalities

	Lumen	Rainier Beach	West Seattle	Mobile	Overall
Total Vaccinations Administered	97,061	56,434	50,549	26,696	230,740
Total First Doses Administered	50,660	29,815	30,494	17,186	128,155
BIPOC Share of Vaccinations	44%	57%	39%	59%	48%
Top Three ZIP Codes Vaccinated	98122 98109 98144	98118 98144 98178	98116 98106 98126	98104 98125 98118	98118 98122 98144

Seattle Compared to Major American Cities



Note: Best available data through 5/24/21

* percentage of 18+ population

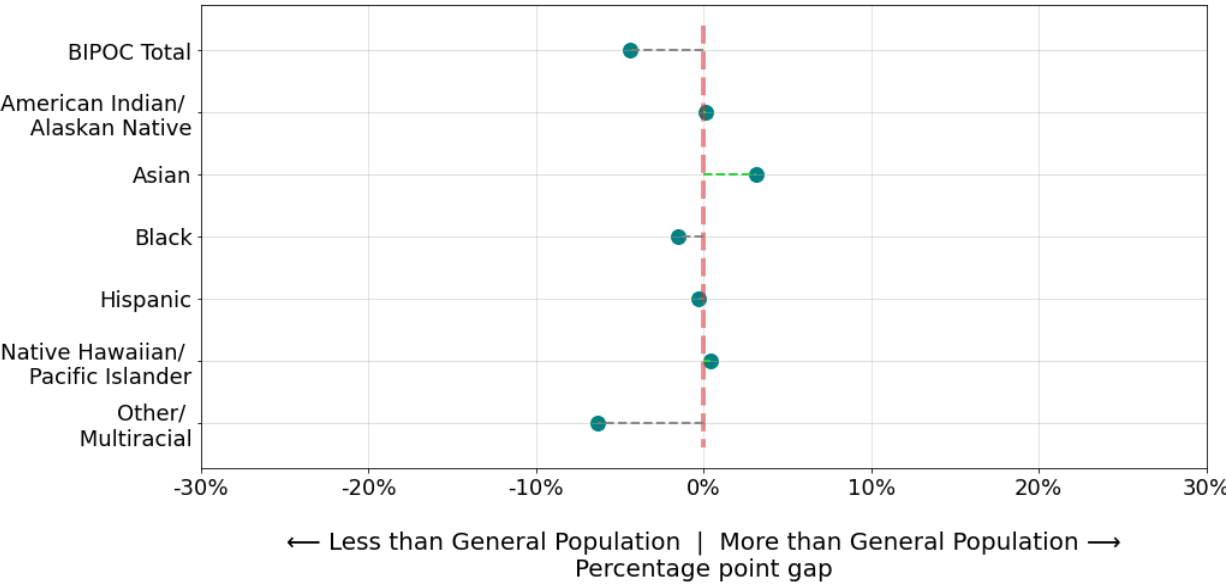
** percentage of 16+ population

*** percentage of 12+ population

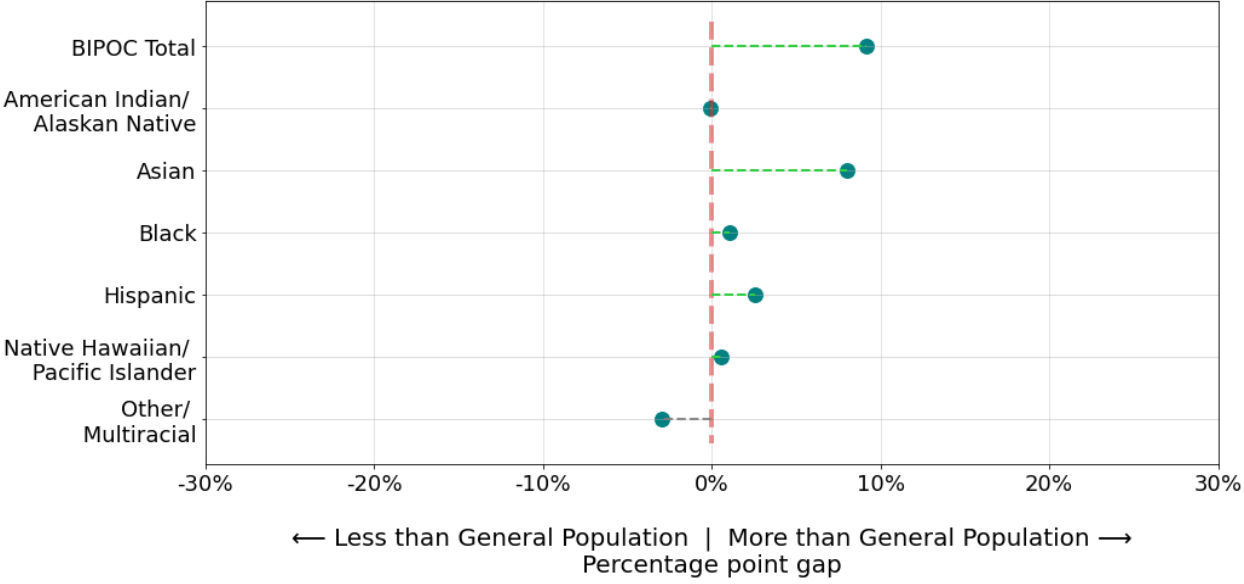


Race/Ethnicity: City as a Provider Focused On Serving BIPOC Residents

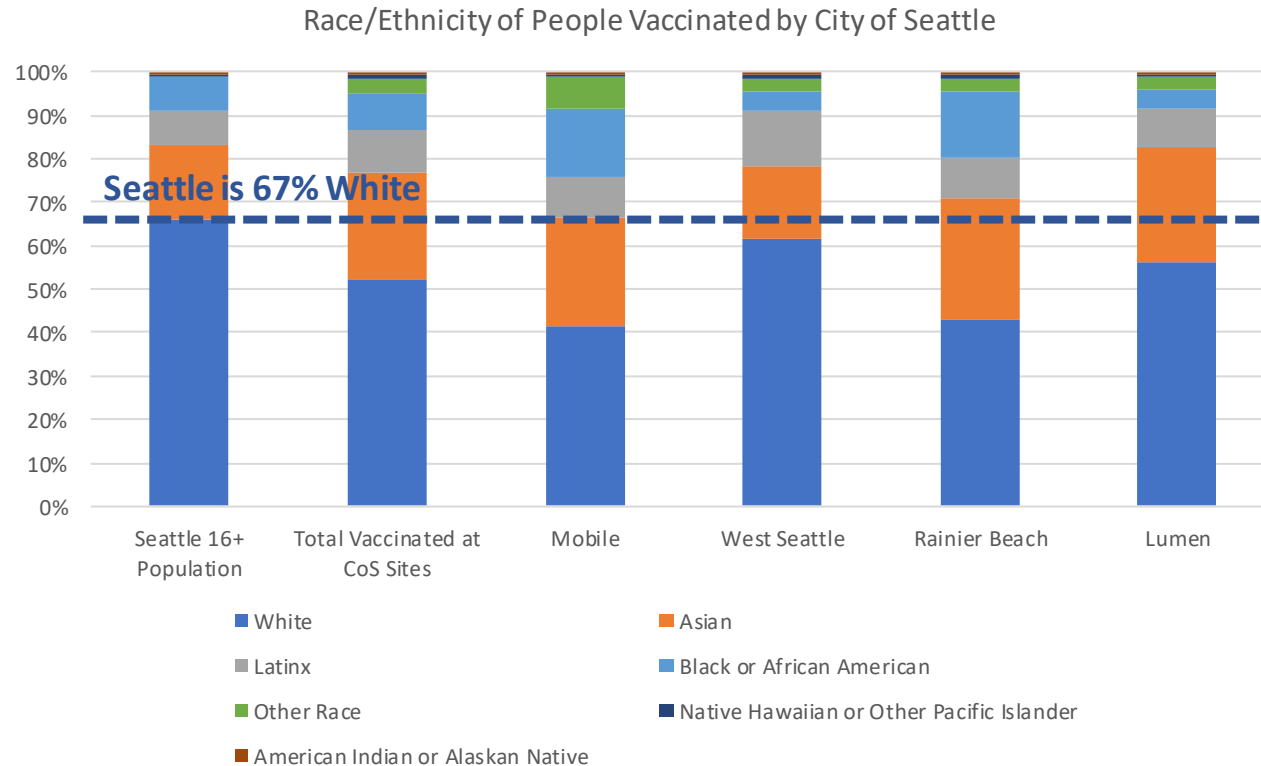
Representation in Vaccinations vs. Seattle General Population
Seattle (All Providers) (thru 5/24/21)



Representation in Vaccinations vs. Seattle General Population
City of Seattle Sites (thru 5/24/21)



Race/Ethnicity of People Vaccinated by City of Seattle

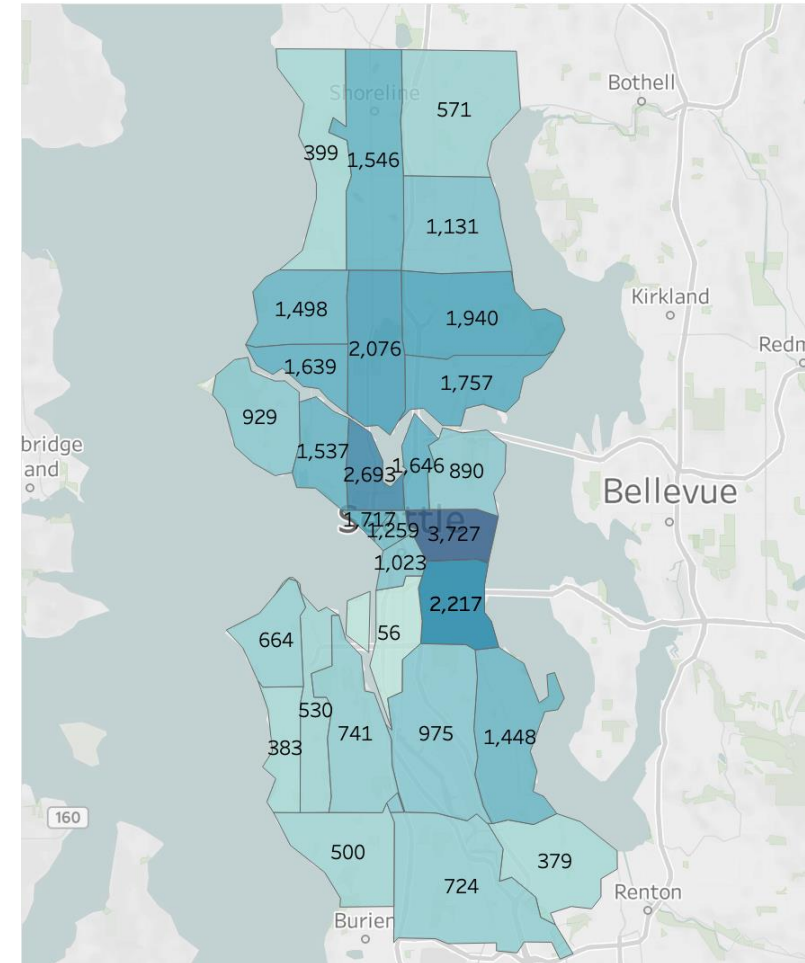


- Every City of Seattle site served BIPOC communities at greater rates than their representation in the city's population
- Our targeted outreach and partnerships with community organizations led to particularly high vaccination rates for BIPOC communities at Rainier Beach and with our mobile events

Geographic Distribution: Lumen Field Event Center

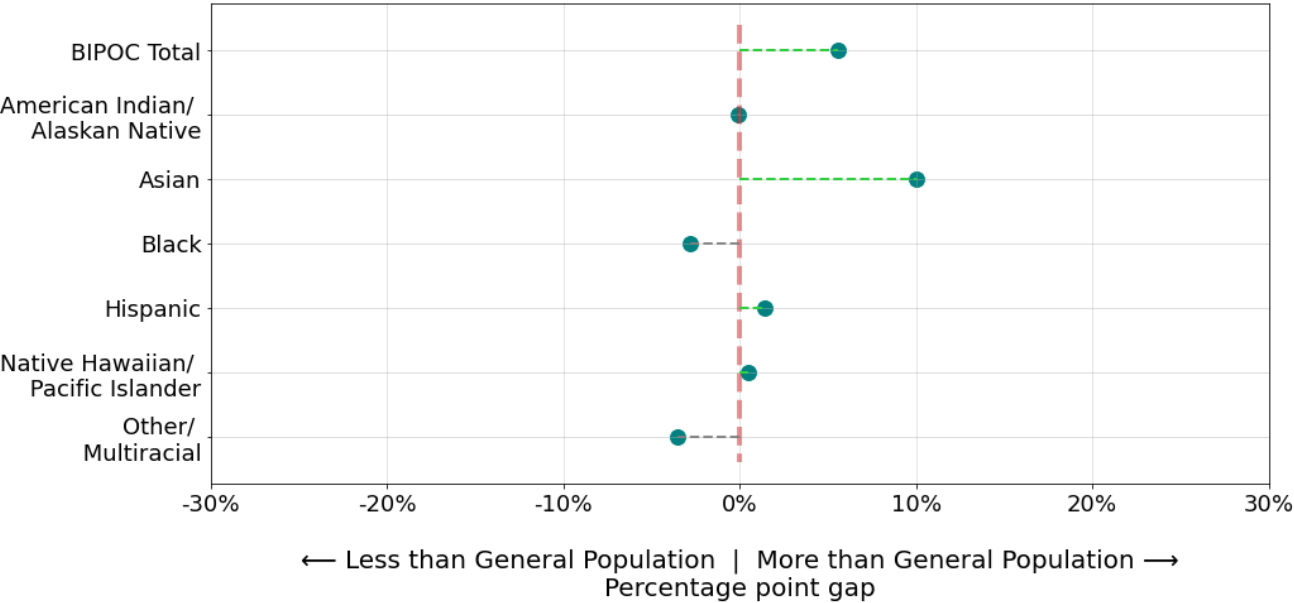
- Geographic distribution of vaccinations at Lumen shows the site served as a Citywide resource, with a focus on Downtown, the Central District, Capitol Hill, and Beacon Hill.

First Doses Administered at Lumen

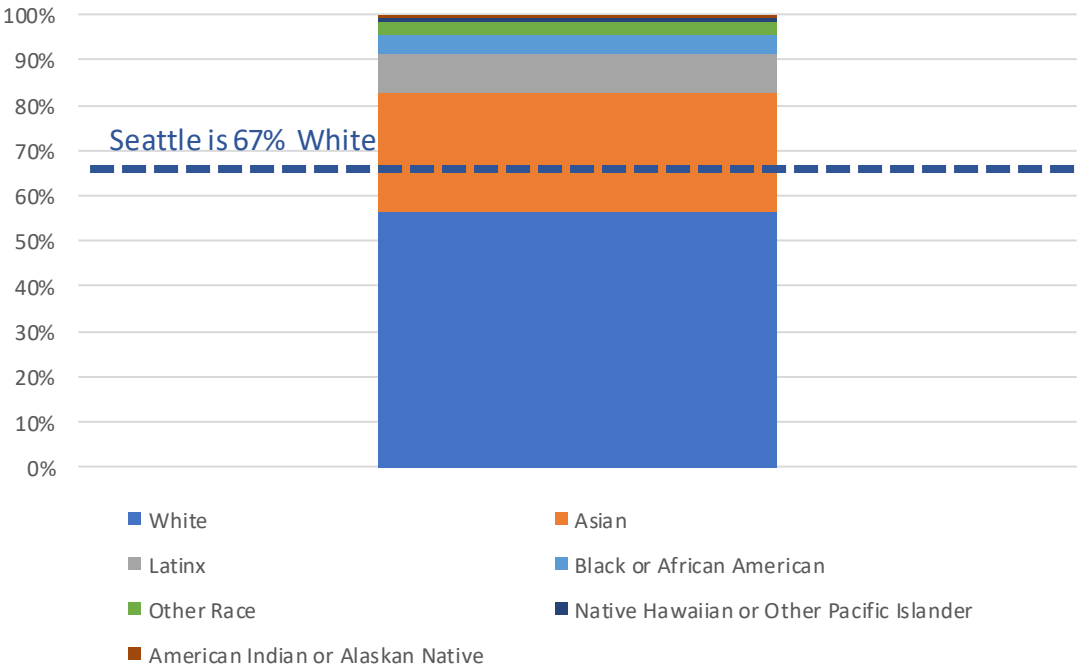


Race/Ethnicity Breakdown: Lumen Field Event Center

Representation in Vaccinations vs. Seattle General Population
Lumen (thru 5/24/21)



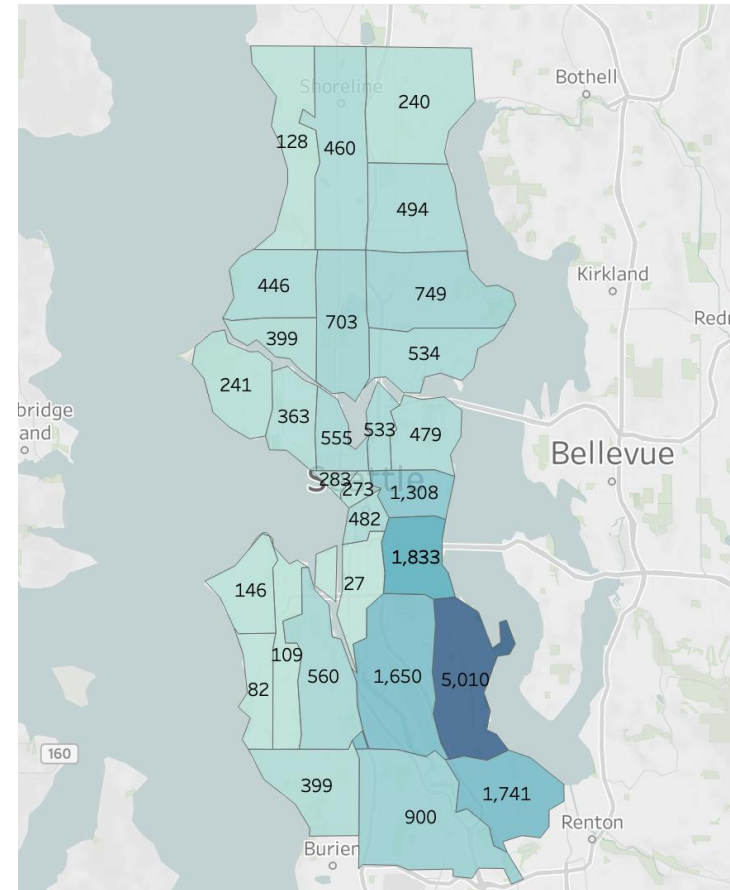
Race and Ethnicity of People Vaccinated at Lumen



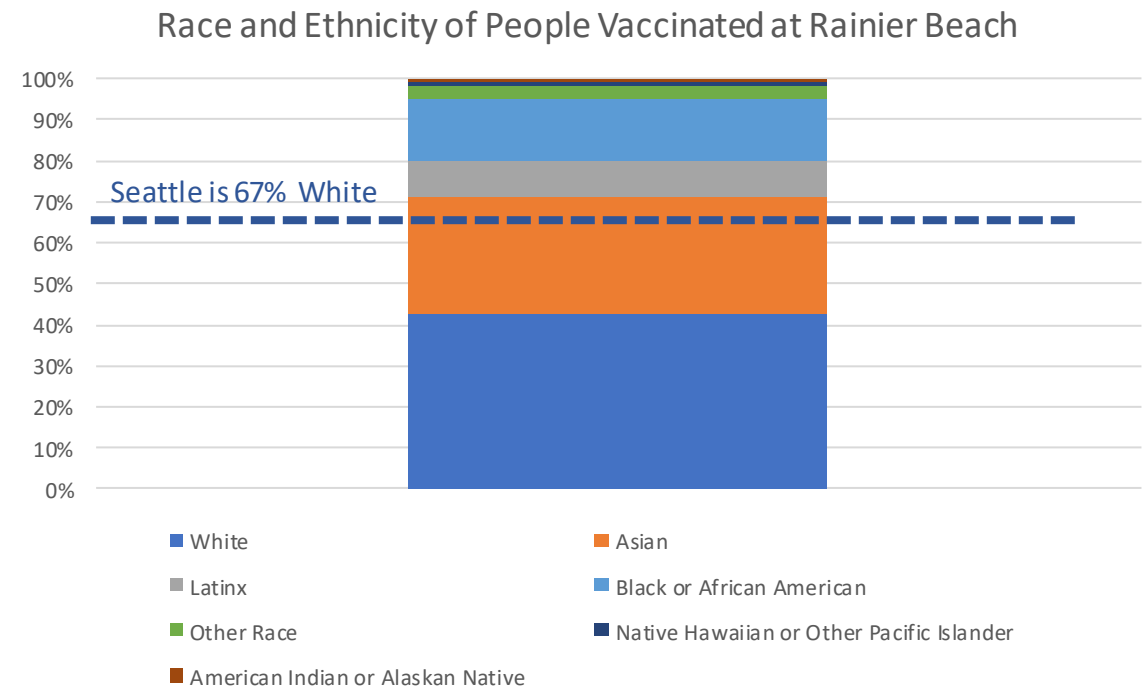
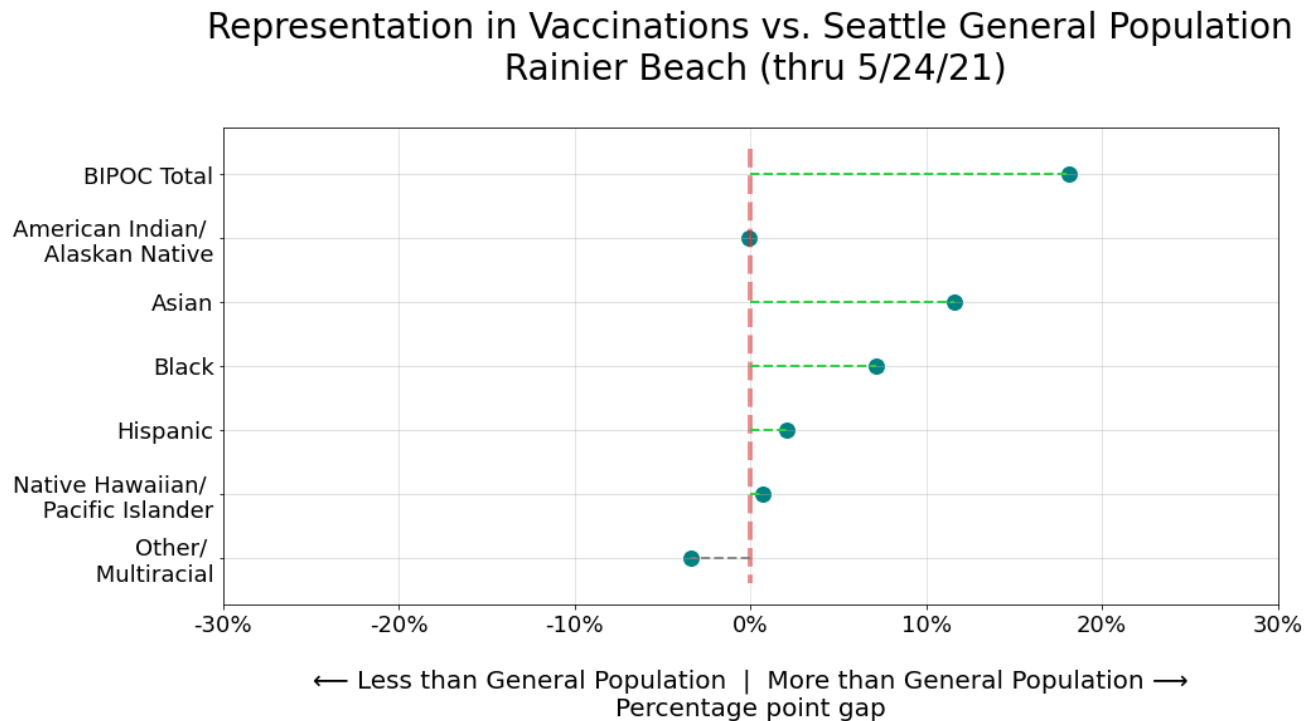
Geographic Distribution: Rainier Beach

- Geographic distribution of vaccinations at Rainier Beach shows the site served as a true neighborhood resource, with a focus on Rainier Beach, the Rainier Valley, and Beacon Hill.

First Doses Administered at Rainier Beach



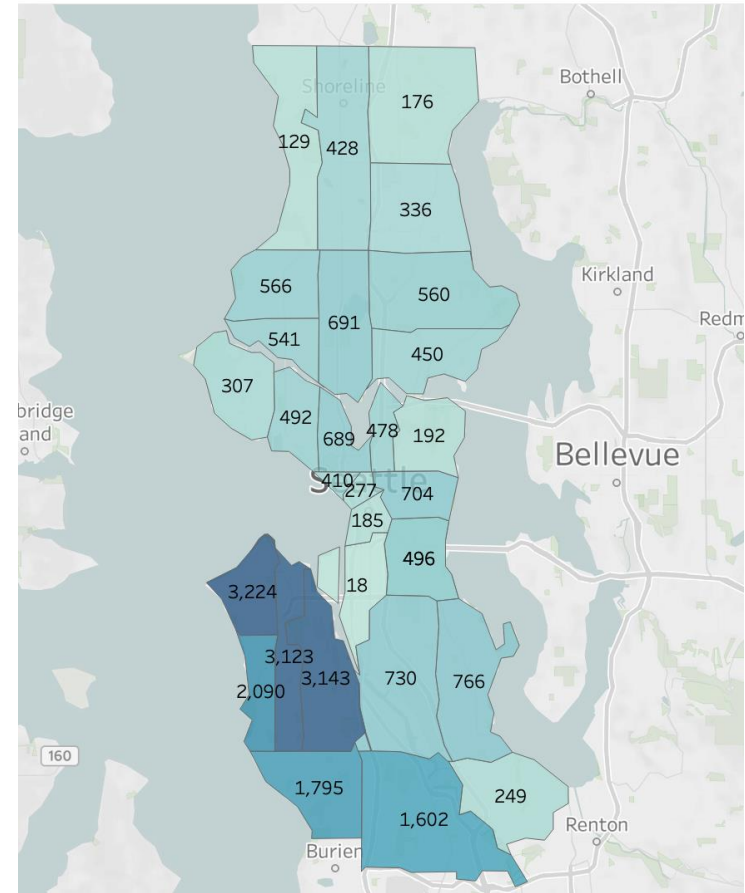
Race/Ethnicity Breakdown: Rainier Beach



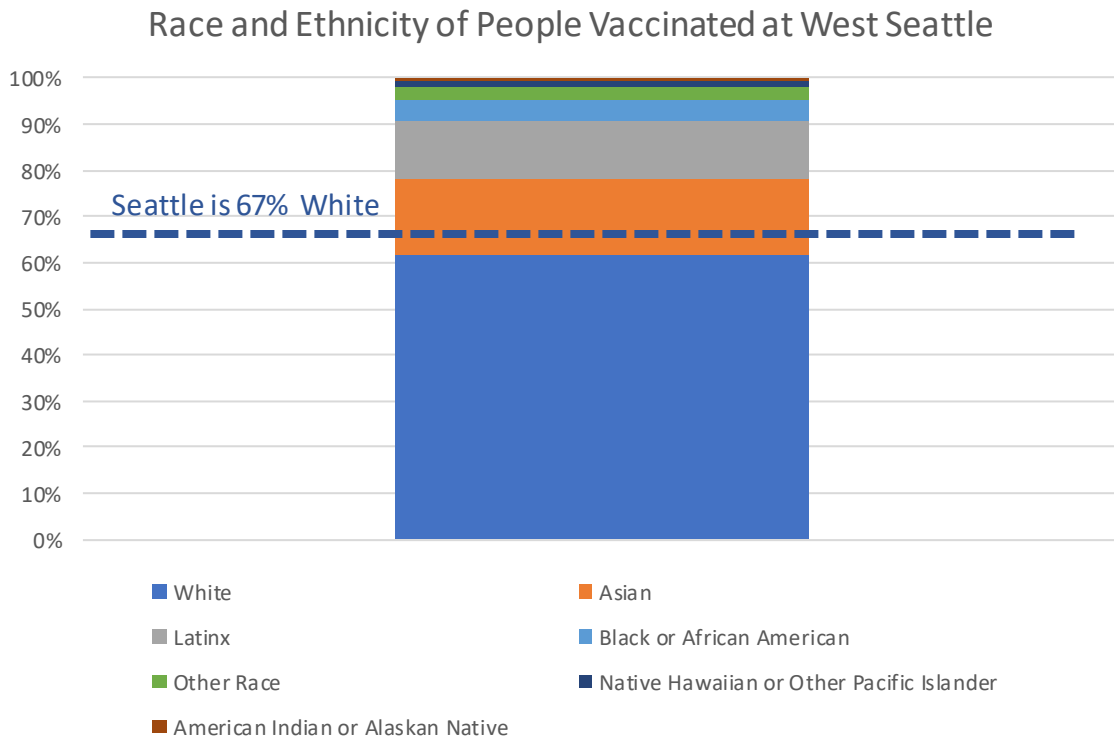
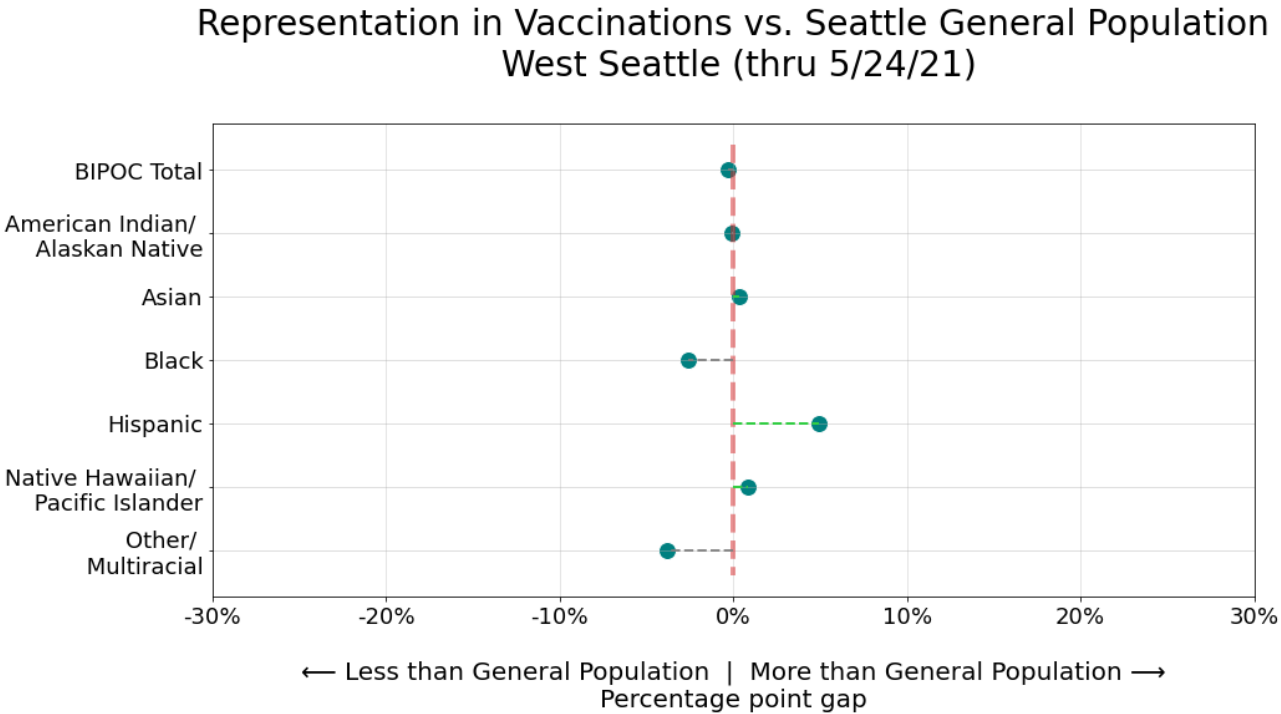
Geographic Distribution: West Seattle

- Geographic distribution of vaccinations at West Seattle shows the site served as a true neighborhood resource, with a focus on Delridge, South Park, and West Seattle.

First Doses Administered at West Seattle



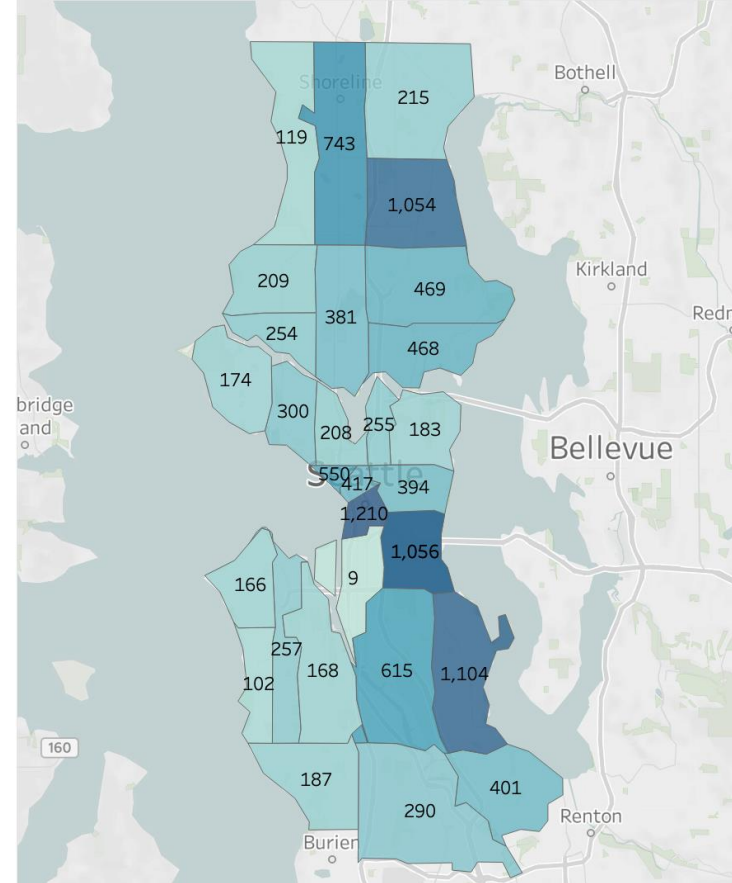
Race/Ethnicity Breakdown: West Seattle



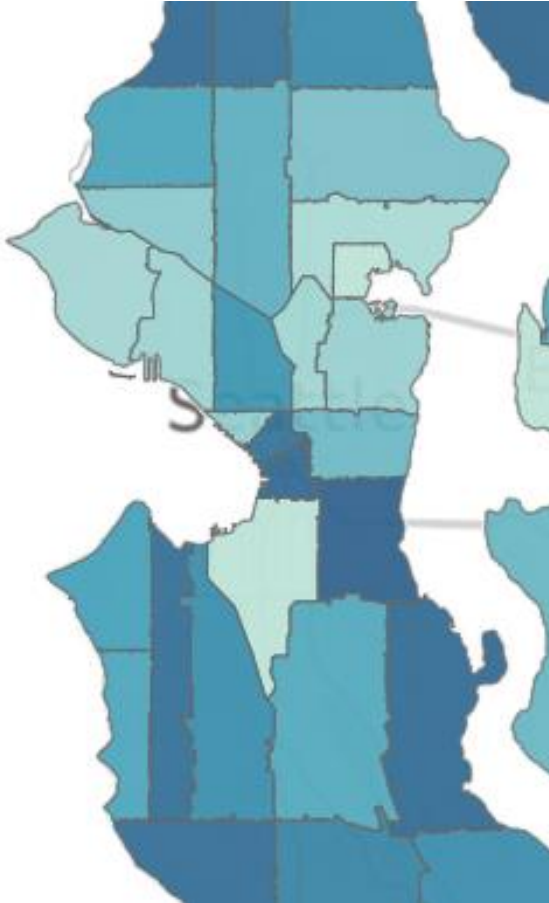
Geographic Distribution: Mobile

- Geographic distribution of MVT vaccinations show a focus on historically underserved neighborhoods including Lake City, Rainier Beach, and Downtown/Pioneer Square.

First Doses Administered by Mobile

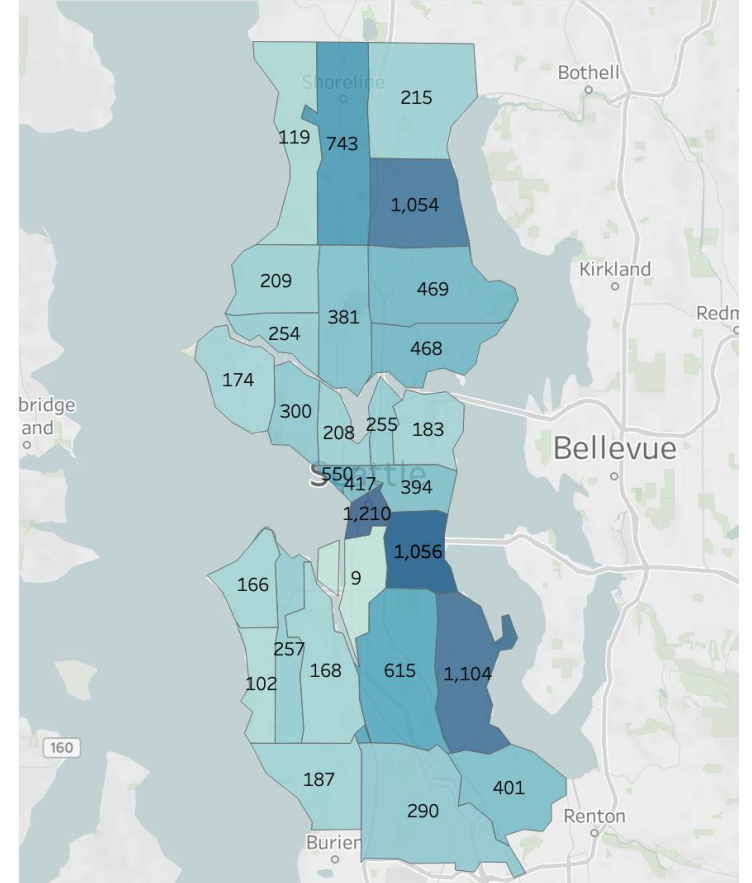


Combating COVID-19 Deaths: Mobile



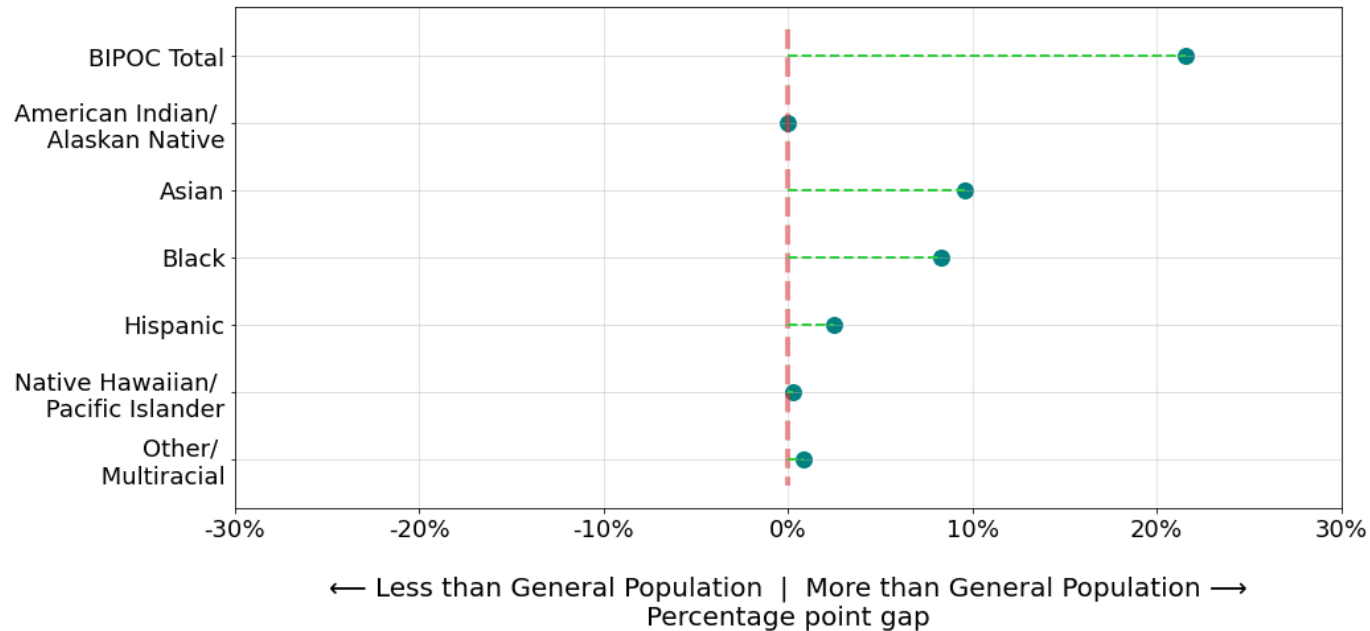
- City used data to determine MVT focus.
- Map on right shows ZIP codes vaccinated by MVTs; map on left shows ZIP codes with highest COVID-19 deaths.
- MVTs reached areas of the City most impacted by deaths.

First Doses Administered by Mobile

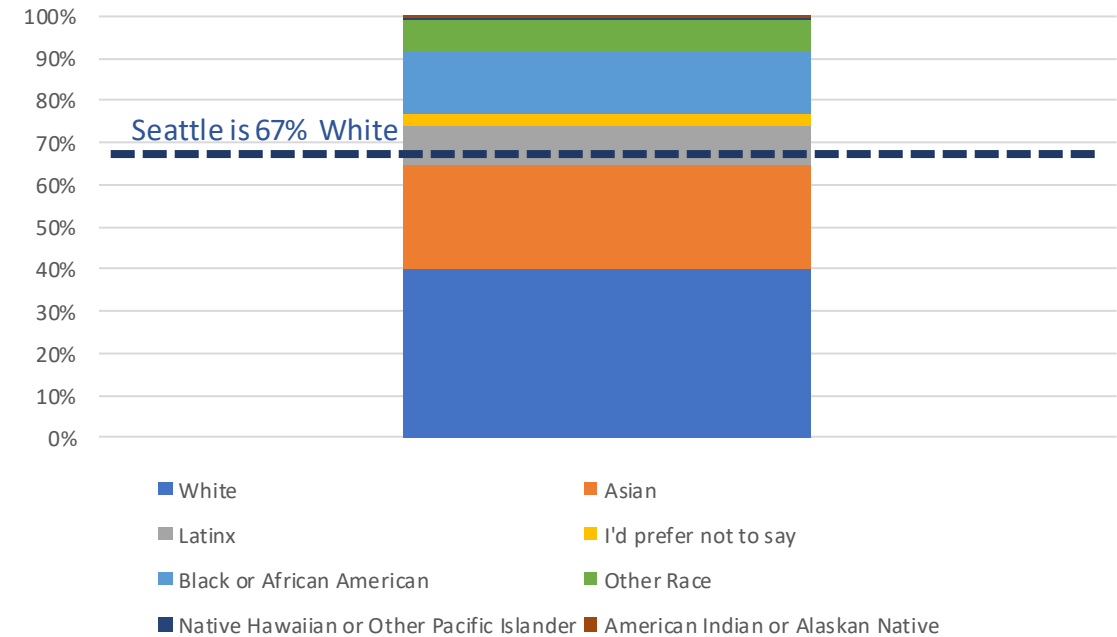


Race/Ethnicity Breakdown: Mobile

Representation in Vaccinations vs. Seattle General Population
Mobile (thru 5/24/21)

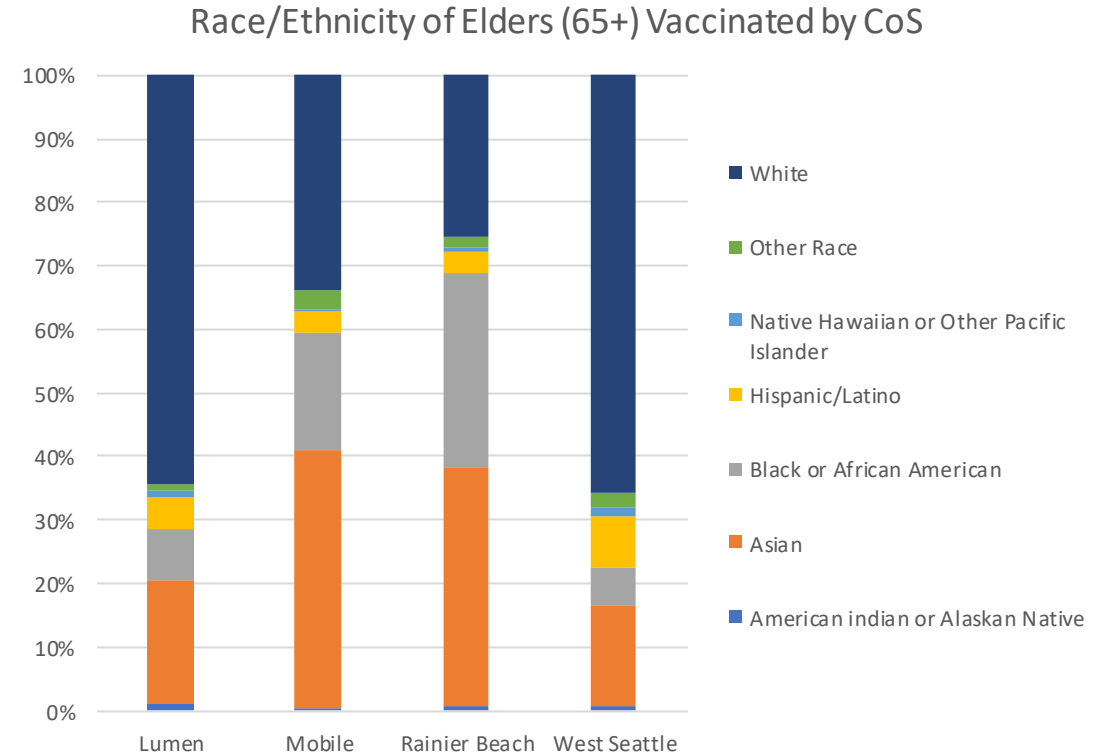


Race/Ethnicity of All People Vaccinated By Mobile



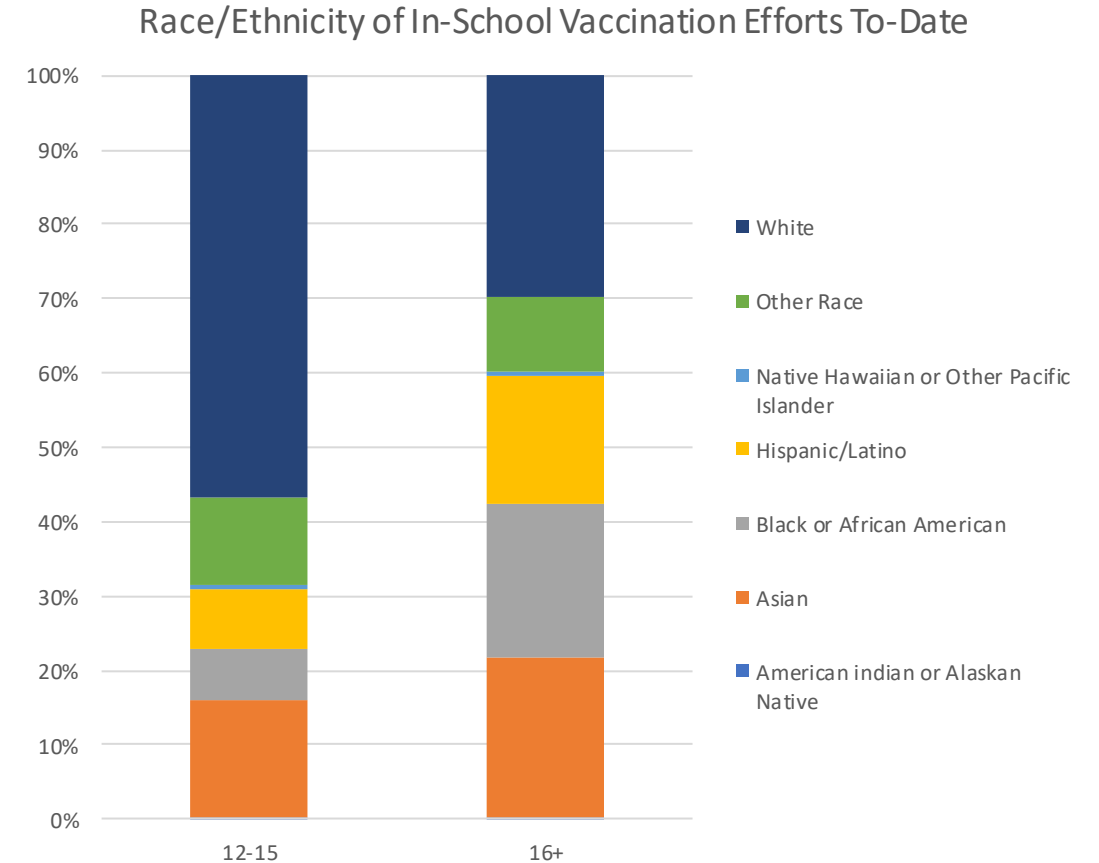
Focusing on Mobile: Mobile a Proven Strategy for Prioritizing Elders (65+)

- SFD mobile teams administered vaccinations at 88 Adult Family Homes and 90 affordable housing buildings for seniors and people with disabilities
- City of Seattle continued to prioritize 65+ population even after eligibility was broadened to other groups
- An estimated 91% of City of Seattle residents over 65 have started their vaccination series



Focusing on Mobile: Proven Strategy for Prioritizing Students/Youth

- SFD will complete over 100 visits to schools to vaccinate students (first and second dose).
- Students 16+ (students eligible for over a month) vaccinated in-school by MVTs were significantly more likely to be BIPOC
- Bringing vaccine opportunities directly to students resulted in more equitable uptake



Focus for Remainder of City Vaccinations: SFD Mobile Vaccination Teams (MVT)

- This summer, the SFD MVTs will serve as the City's primary vaccination strategy.
- MVTs will continue to partner with schools, business districts, sports teams, and community-based organizations to bring the vaccine directly to Seattle communities.
- MVTs are the most effective strategy in reaching BIPOC communities, elders, and areas of the city most impacted by COVID-19.