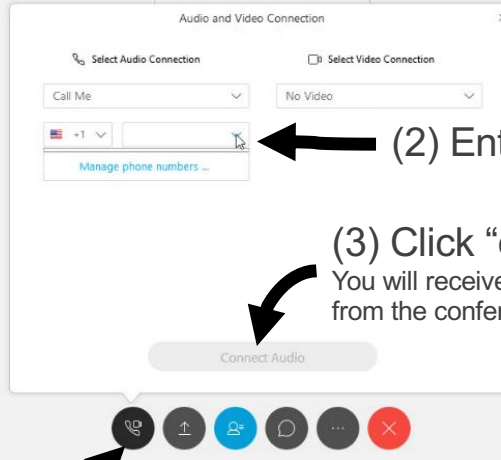


# SEAWALL REPLACEMENT AT EMMA SCHMITZ MEMORIAL OVERLOOK - VIRTUAL PUBLIC MEETING

**PRESENTATION AUDIO:** You need your phone to connect the audio. Follow steps 1, 2 & 3 below



(2) Enter phone number

(3) Click "connect audio"  
You will receive a call immediately from the conference line

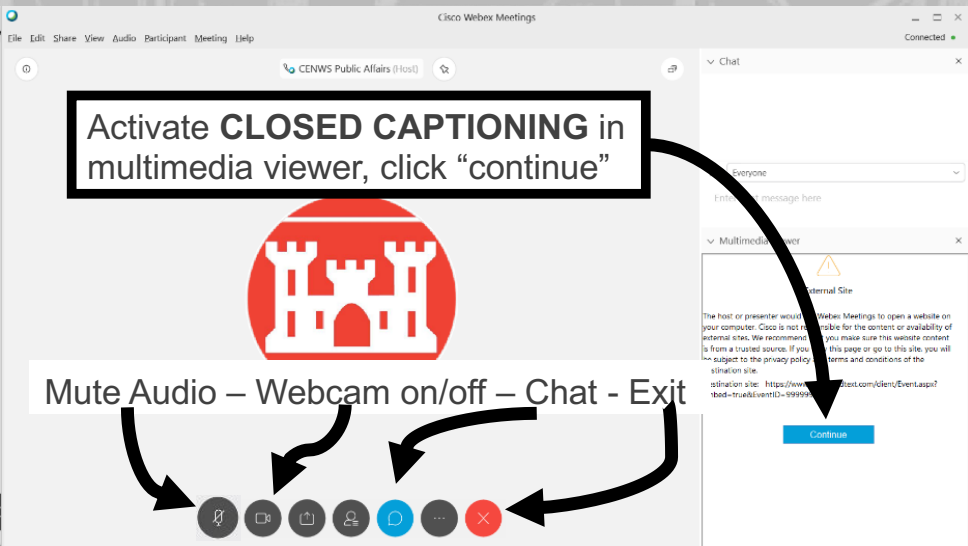
(1) Click phone icon, select "Call Me"

If the "Call Me" function is not working, you can direct dial the audio at: **1-888-273-3658**

Enter Access code: **5721558#**

Enter Security code: **1139#**

## Webex functions:



Mute Audio – Webcam on/off – Chat - Exit

**THIS PRESENTATION IS BEING RECORDED**



US Army Corps  
of Engineers®



Seattle  
Parks & Recreation

# SEAWALL REPLACEMENT AT EMMA SCHMITZ MEMORIAL OVERLOOK - VIRTUAL PUBLIC MEETING

Presenters:

**Jeff Dillon**, Project Manager, U.S. Army Corps of Engineers (USACE)

**Garrett Farrell**, Senior Capital Projects Manager, Seattle Parks and Recreation

**Jenna Cunningham**, Project Engineer, USACE

**Lee Ford**, Project Designer, USACE

Date: **June 17, 2020**



US Army Corps  
of Engineers®



Seattle  
Parks & Recreation



6/18/20



# HOUSEKEEPING

3



## Technical difficulties:

- If **online** participants experience any technical difficulties, send a note to “Host” with details of what you are experiencing.
- If **call-only participants** experience any technical difficulties, please hang up and try your call again.
- All participants’ phones will remain muted until the Q&A period later.

## To submit a question:

- **Online:** Type a question at any time using the **Chat** window on the right side of your screen. Our team will read your question to all participants at the appropriate time.
- For **call-only** participants: We will pause to allow questions at an appropriate time to allow voice questions.



# WEBEX FUNCTIONS

4



Cisco Webex Meetings

File Edit Share View Audio Participant Meeting Help

CENWS Public Affairs (Host)

Activate **CLOSED CAPTIONING** in multimedia viewer, click "continue"

Mute Audio – Webcam on/off – Chat - Exit

Chat

Everyone

Enter your message here

Multimedia Viewer

External Site

The host or presenter would like to use Webex Meetings to open a website on your computer. Cisco is not responsible for the content or availability of external sites. We recommend you make sure this website content is from a trusted source. If you click this page or go to this site, you will be subject to the privacy policy and terms and conditions of the destination site.

destination site: <https://www.cisco.com/text.com/dient/Event.aspx?bed=true&EventID=999999>

Continue





## MEETING AGENDA

5



- Purpose and Overview
- Project Features
- Construction Orientation
- Construction Actions - What will you experience
- Next Steps/Contacts



# PROJECT PURPOSE & OVERVIEW

6







# PROJECT PURPOSE & OVERVIEW

7







# PROJECT PURPOSE & OVERVIEW

8







# PROJECT PURPOSE & OVERVIEW

9







# PROJECT PURPOSE & OVERVIEW

10



HISTORIC DAMAGE - Northern Seawall Failure on January 21, 1998

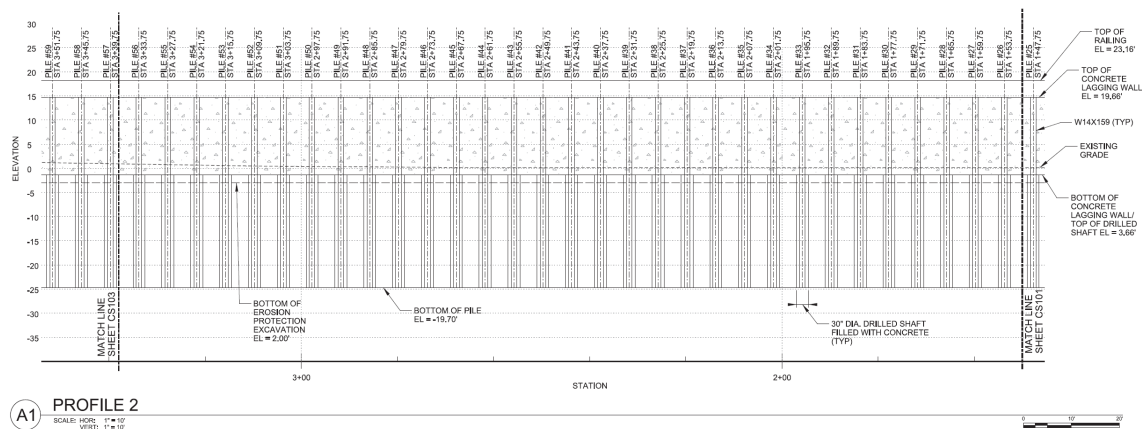
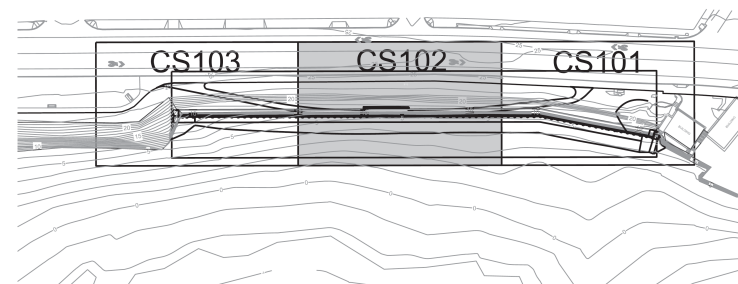




# QUESTIONS



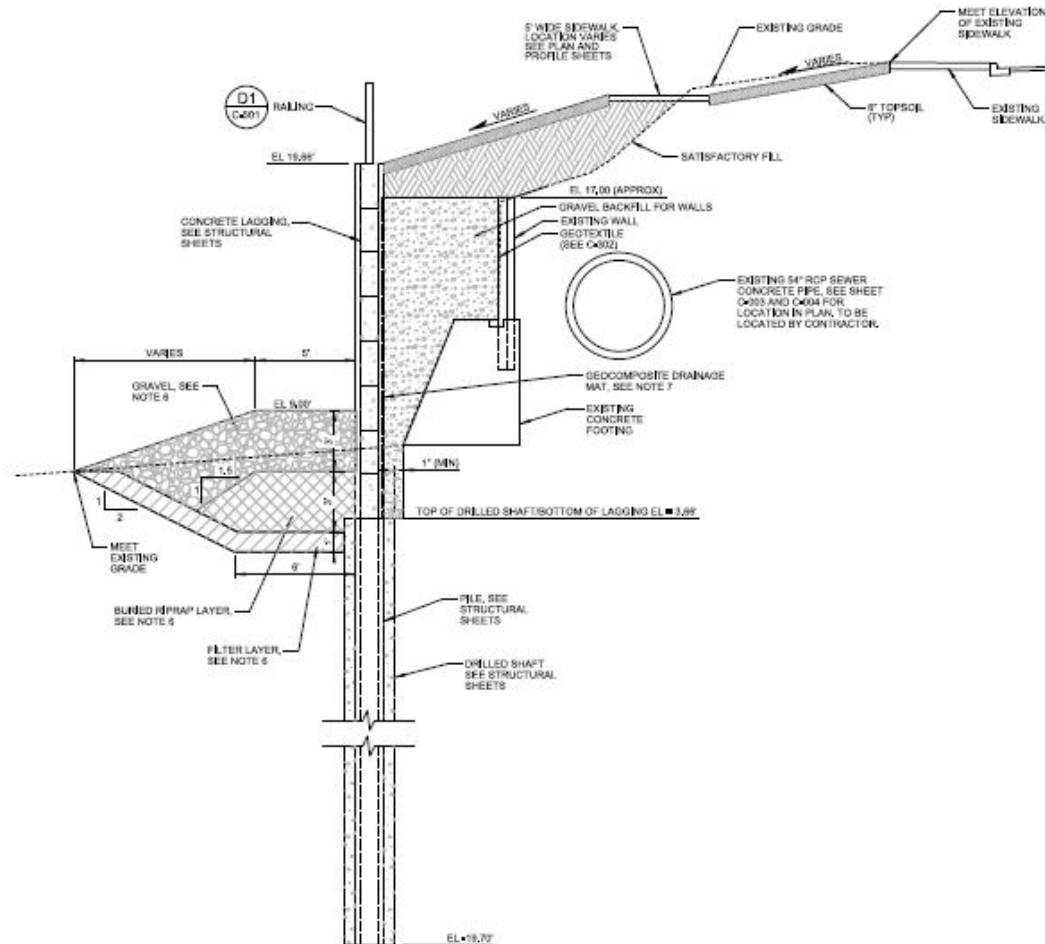
# PROJECT FEATURES





# PROJECT DRAWINGS

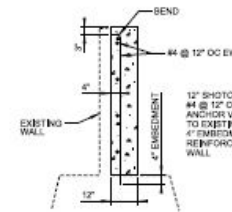
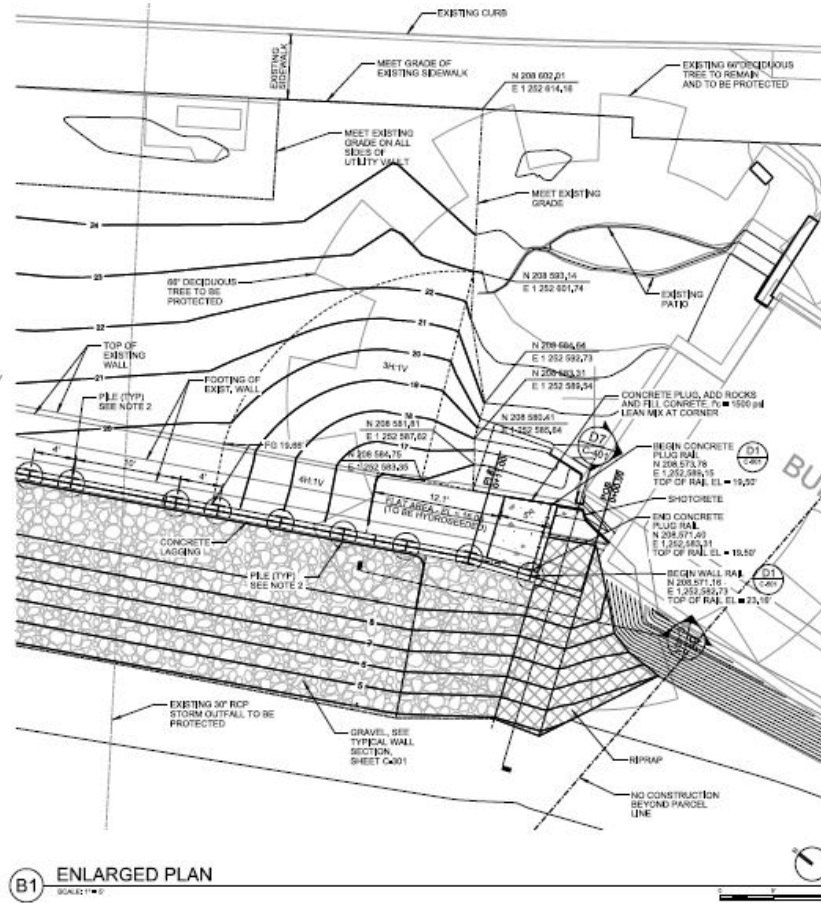
14





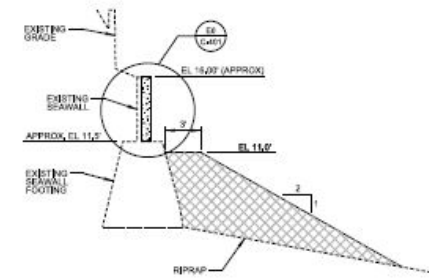
# PROJECT DRAWINGS

15

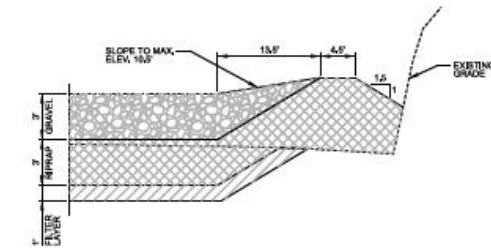


E6 SHOTCRETE REINFORCEMENT  
NOT TO SCALE

1. PILES SHALL BE 6\"/>
2. SEE STRUCTURAL SHEETS FOR WALL DESIGN
3. SEE SHEET C-301, FOR TYPICAL SECTIONS C
4. SEE SHEET C-301, FOR SHORING WALL ALONG HORIZONTAL CONTROL.



D7 TYPICAL SECTION  
NOT TO SCALE



B7 TYPICAL SECTION  
NOT TO SCALE



# QUESTIONS



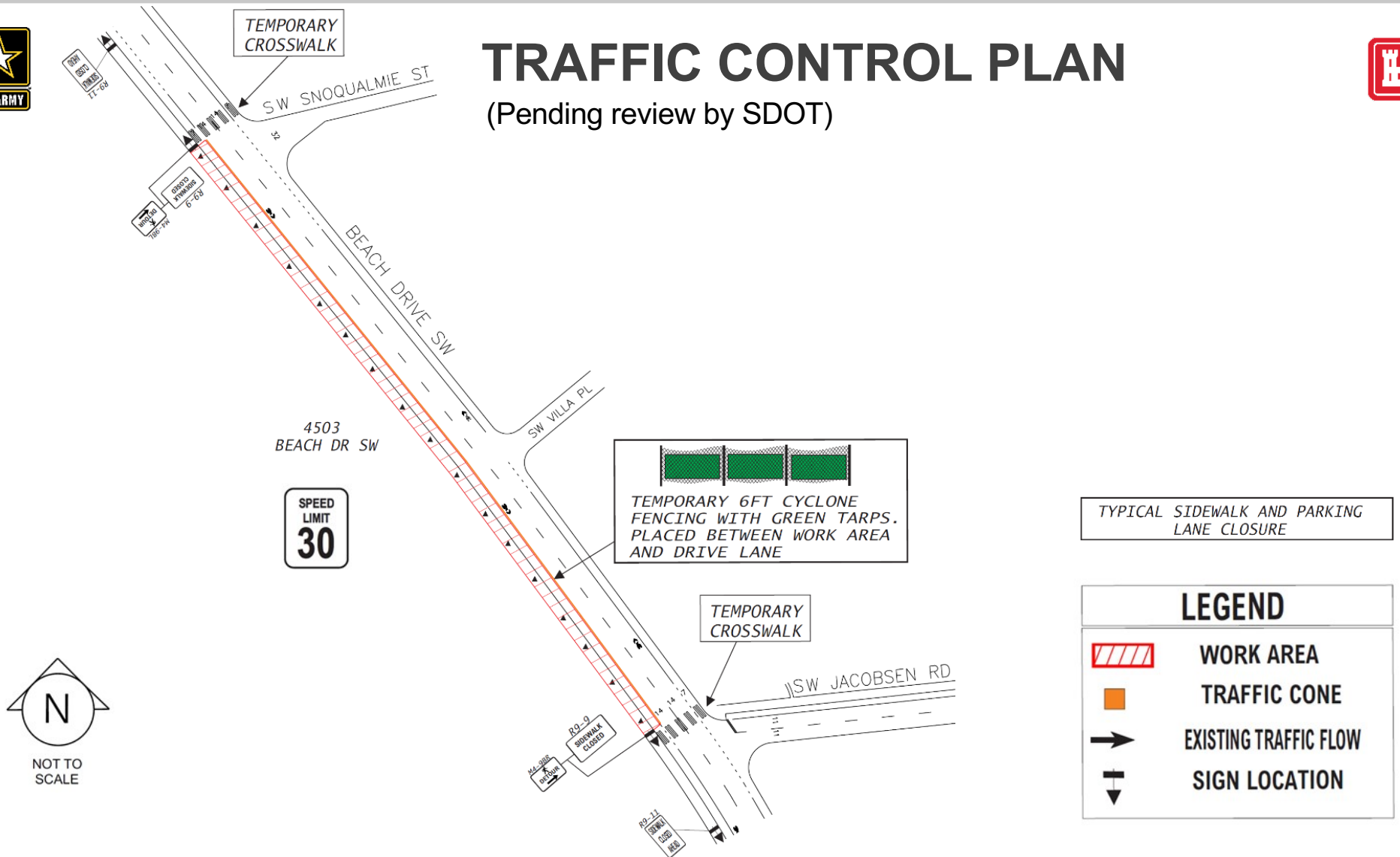


# CONSTRUCTION SEQUENCING AND SITE USE



# TRAFFIC CONTROL PLAN

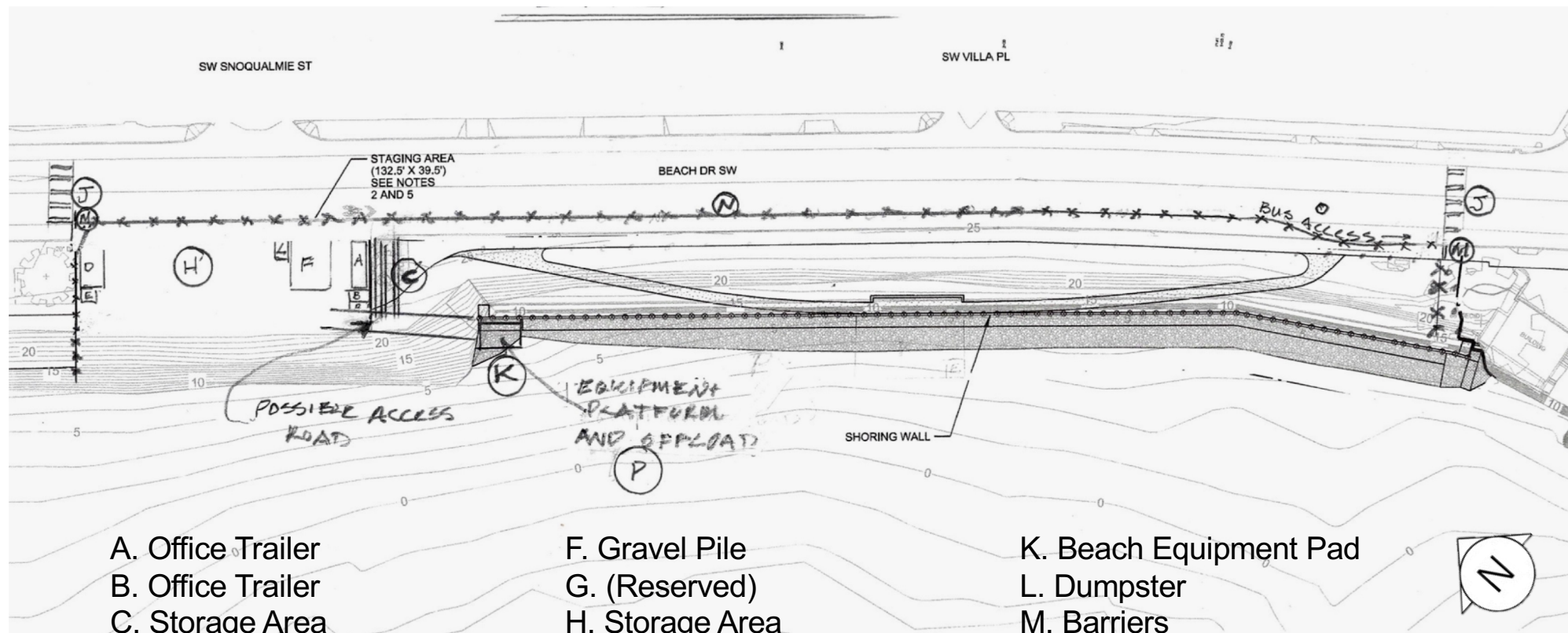
(Pending review by SDOT)





# SITE PLAN

20





# MOBILIZATION SEQUENCE



- **FIRST WEEK**

- Park closure
- Fencing, no parking and detours installed
- Office trailers start to arrive
- Piles and construction material deliveries
- Heavy equipment starts to arrive

- **SECOND WEEK**

- Piles and construction material deliveries
- Crane arrives by of end second week



# WHAT TO EXPECT FOR MOBILIZATION

22





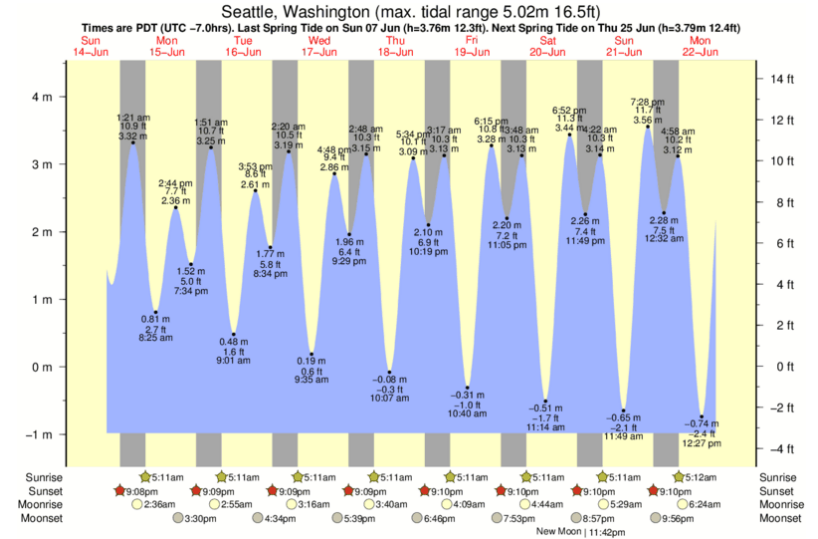
# QUESTIONS





## WHAT TO EXPECT DURING CONSTRUCTION

- **When will work happen?**
  - Hours of construction
  - Tides (to ensure maximum work below wall)
  - Early start time / Late Finish time / Weekends
- **Parking**
  - Limited to construction site
- **Traffic**
  - Detours (Pedestrian)
  - Vehicles/Trucks
- **Noise**
  - Vehicles (trucks)
  - Equipment (Excavators)(Drill rigs)(backup alarms)
  - Driving sheet pile (vibratory driving)
  - Materials (banging of metal, etc)





# QUESTIONS



## NEXT STEPS & CONTACTS

26



- **NEXT PUBLIC MEETING**
  - Wednesday, July 1 at 4 p.m.
- **USACE PROJECT CONTACT INFORMATION**
  - Website shortcut: <https://go.usa.gov/xw5T5>
  - Email: [AlkiSeawall@usace.army.mil](mailto:AlkiSeawall@usace.army.mil)
  - Phone: 206-764-3750