

# PARK DISTRICT COMMUNITY MEETING

---



**Seattle**  
**Parks & Recreation**

healthy people healthy environment strong communities



# Our Vision & Mission



Seattle Parks and Recreation provides welcoming and safe opportunities to play, learn, contemplate and build community, and promotes responsible stewardship of the land. We promote healthy people, a healthy environment and strong communities.





# Seattle Park District



# Park District Overview

- Approved by Seattle voters in August 2014
- Budgeted in six-year cycles
- Provides \$50M annually to our city's parks, recreation facilities, and community events
- 23% of SPR's overall budget in 2019
- Budget proposed by Mayor, and adopted by City Council
- Oversight Committee convened to provide recommendations on how these funds are spent



# Next Steps

MAR  
2020

Public meetings on Park District and PDOC/Park Board process kickoff; Councilmember briefings

MAY  
2020

Park District Oversight Committee presents recommendations

JUN-AUG  
2020

Mayor's Office budget process and prioritization

AUG  
2020

Mayor transmits Proposed Park District 6-year spending plan to City Council in its role as the Park District Board

SEP-OCT  
2020

Park District Board review process (discussions and public hearing)

NOV  
2020

City Council Park District Board votes on 6-year spending plan and 2021 Park District budget





# Park District

A community-led organization



**Offer free,  
culturally  
responsive  
programming**



Reduce facility  
closures  
through  
preventative  
maintenance

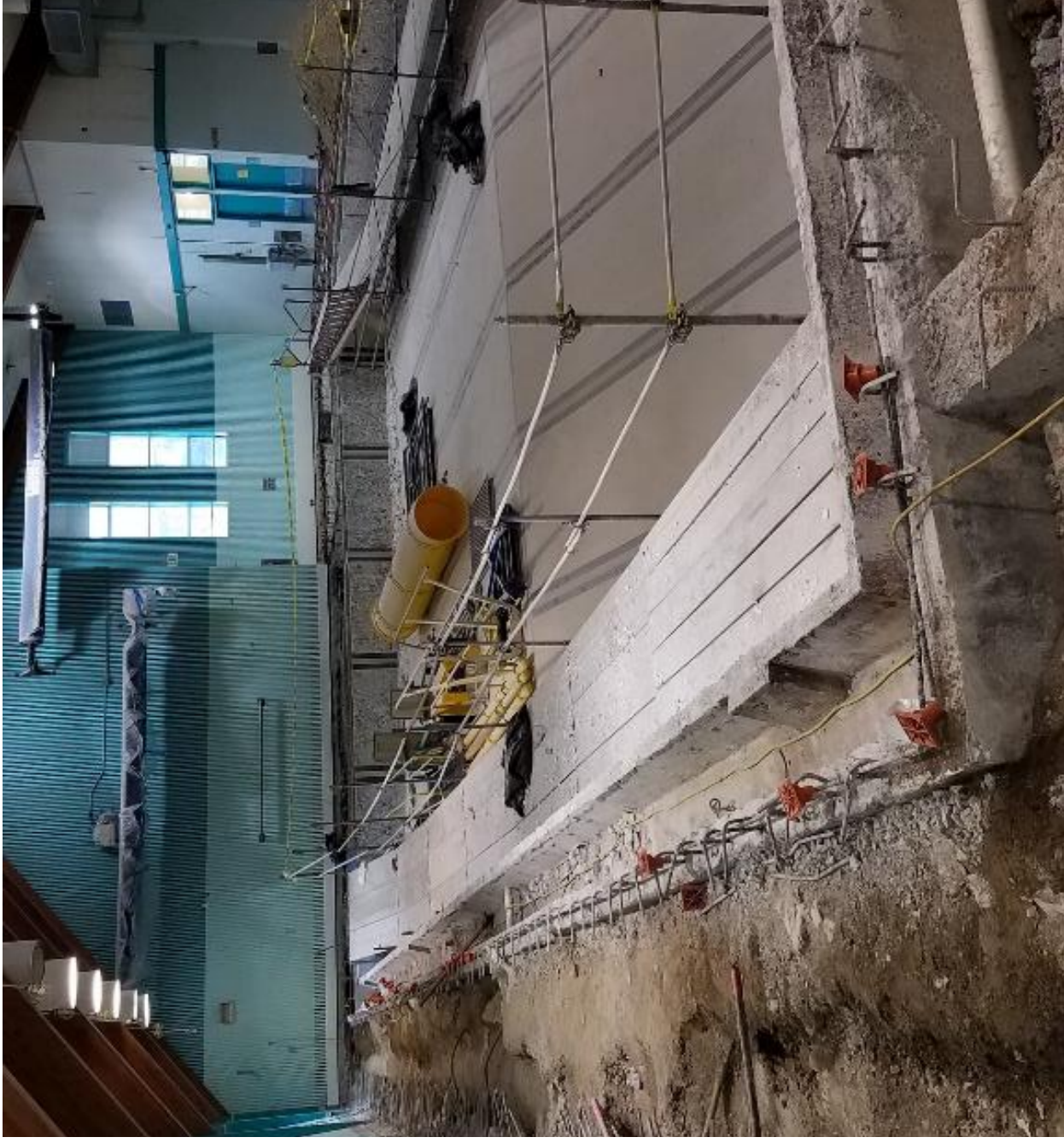




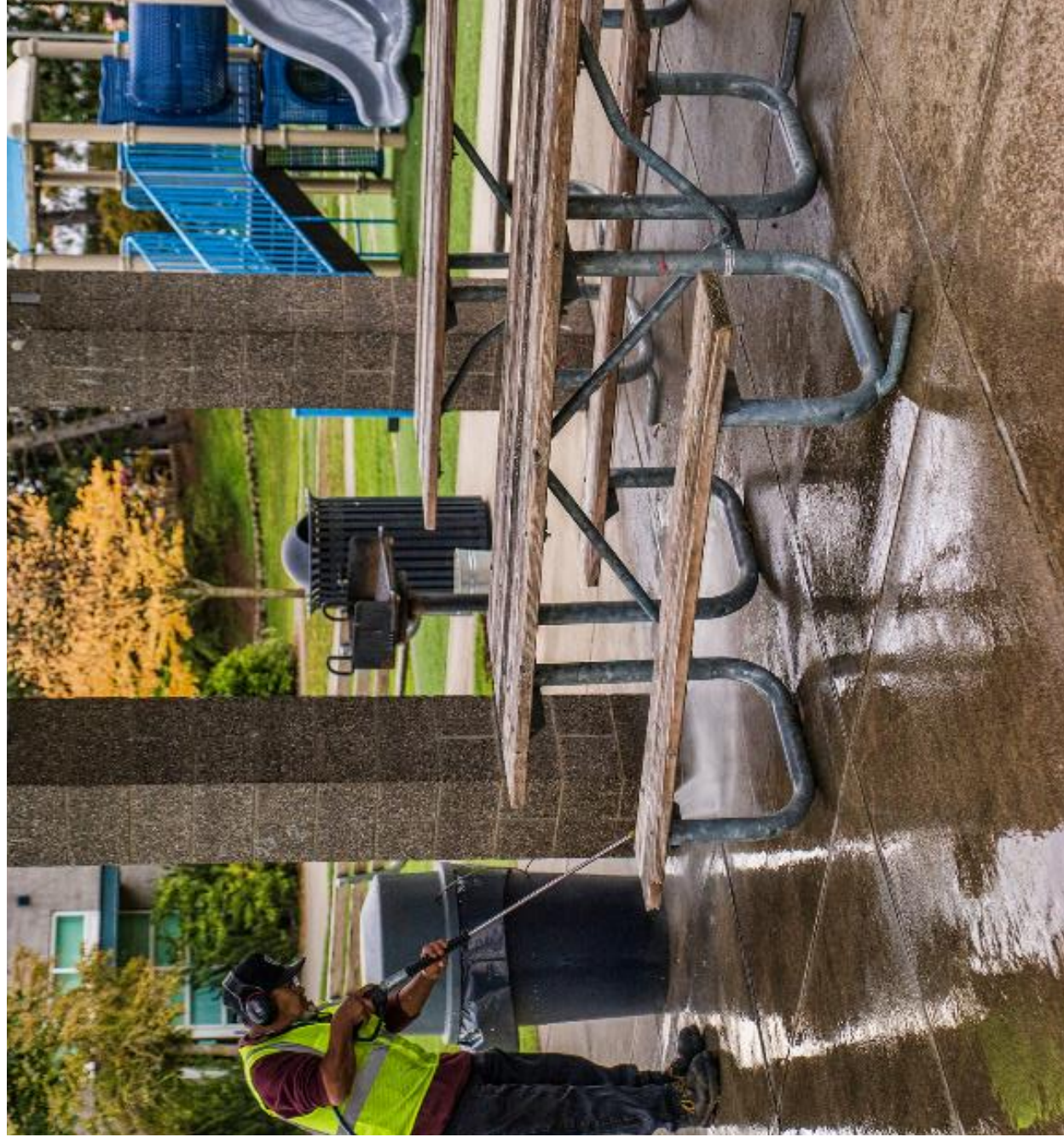
# Develop 14 new parks



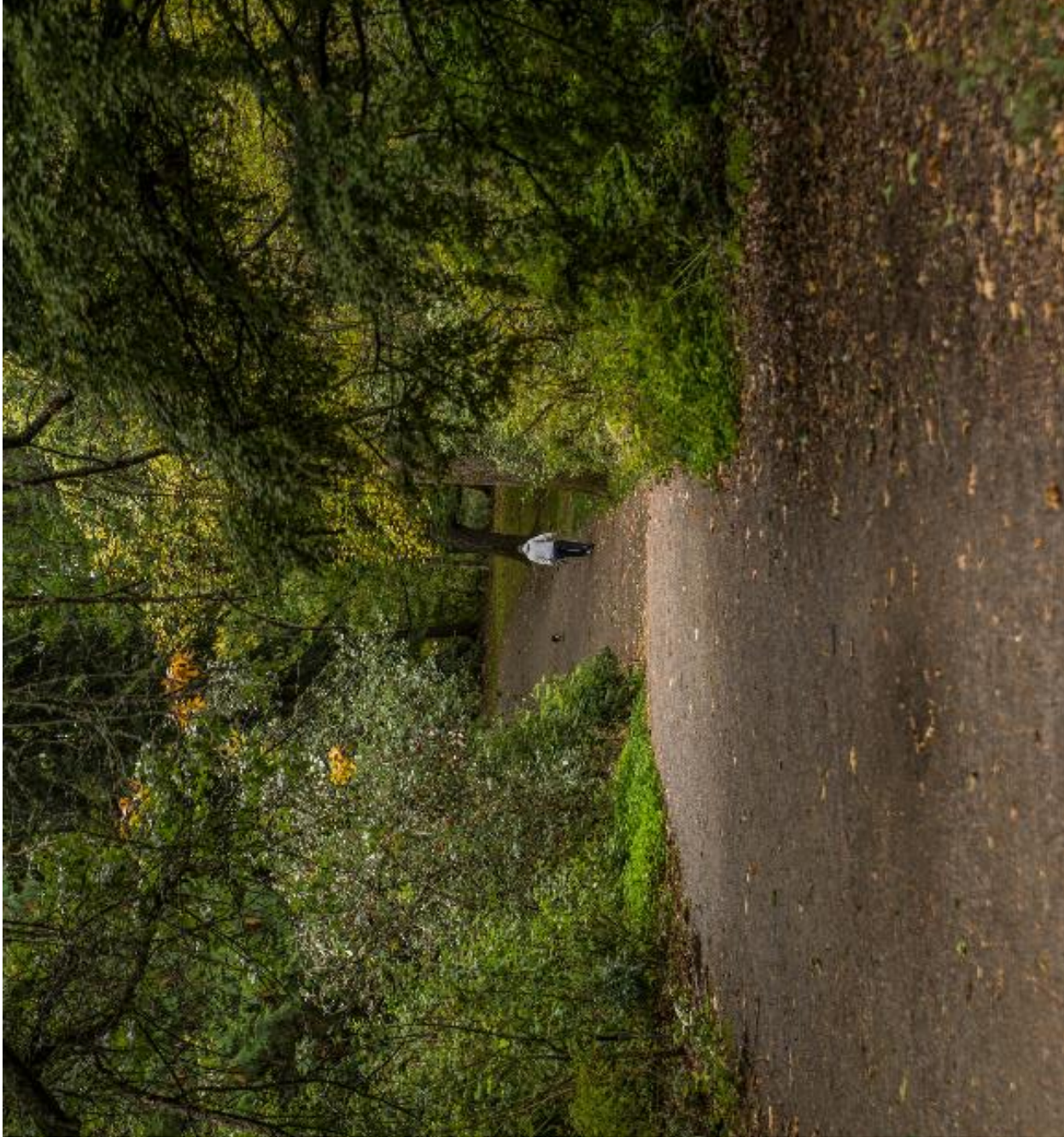
**Make critical  
repairs to  
community  
centers and  
pools**



**Maintain  
parks more  
frequently  
and provide  
enhanced  
cleaning  
where  
needed**



Restore  
thousands of  
acres of urban  
forest



**Make dozens of  
accessibility  
improvements  
to our  
restrooms,  
pathways and  
facilities**



Provide low-cost recreation and free drop-in programs



# Enhance programming for older adults and people with disabilities



# Hold hundreds of community events







# Lessons Learned



# Takeaways from work to date

- Community center and pool maintenance work was more significant than expected
- Major maintenance ramped up over Cycle 1; life-cycle management approach
- Challenge fund structure needed reevaluation
- Continuous improvement on performance management (key performance indicators, Park Inspection Program, etc.)
- Free programming very successful
- Recreation scholarships in demand





# Why Plan Now?

Seattle has grown since 2015...

105,000  
+

new residents

44,000+  
new housing units

110,000+  
new jobs

88,000  
residents living below  
poverty line in 2019

↑ 39%  
household income

↑ 26%  
unsheltered individuals  
in Seattle since 2015



# Commitment to Equity

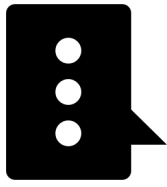
The **PATHWAY TO EQUITY** is our department's commitment to dismantling systemic racism in Seattle. We recognize that disparities exist with the perpetuation of institutionalized racism through factors like:

- The prevalence of **white supremacy culture**
- **Inequitable distribution of power**
- **Lack of accountability** to communities of color

We are taking steps now to build an equity and engagement plan, improve equity analysis tools, train our staff, and more.



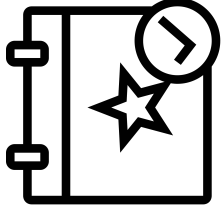
# Strategic Plan Inputs



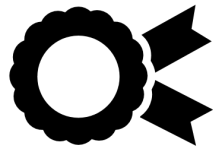
Surveys offered in  
**12** languages, and  
social media posts  
translated into  
**7** languages



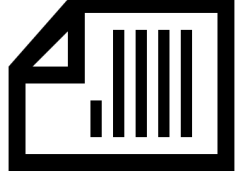
**7** other City  
departments  
engaged  
(and Seattle  
Public  
Schools)



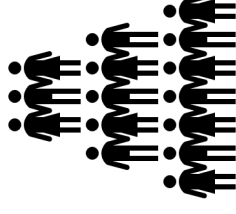
**30+** engagement  
meetings and tabling  
at **20+** community  
events



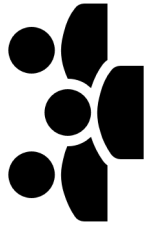
**4** Task Forces &  
**1** PDOC  
subcommittee



Informed by past  
planning efforts



Over **10,000**  
people engaged



Over **25** meetings  
with SPR staff  
at all levels



# Strategic Priorities for the Next 12 Years

## HEALTHY PEOPLE

- Safe access to nature and recreation
- Park are maintained to promote inclusivity and connectedness

Programs should promote the building of healthy habits

## STRONG

## COMMUNITIES

- Affordable recreation
- Spaces to gather and build community

Programs that build life

skills and life-long learning  
Support city-wide efforts to address economic disparity and homelessness

## HEALTHY

## ENVIRONMENT

## ORGANIZATIONAL

## EXCELLENCE





# Discussion Topics & Guidance





# What we are thinking about?

**How can our parks, community centers, pools, and facilities serve more people?**

- More community center hours
- More free and low-cost programming and activation, indoors and outdoors
- More restroom access at parks

**How can we continue taking care of our system?**

- Climate change response
- Accessibility improvements
- Safety improvements

**How can we build toward the city of the future?**



# Grounding Principles

- Seattle Parks and Recreation *serves people.*
- We *prioritize equity.*
- SPR is part of the *citywide solution* to challenges facing Seattle.
- As our city grows and changes, we must be open to a *new way of doing things.*
- We honor the diversity and history of our city, while also *looking toward our future.*
- We must *engage in ongoing discourse* with our community to ensure we are serving all of our residents.
- Our plan should work to **mitigate the effects of climate change.**
- We must build internal capacity to **deliver excellent service.**



# Next Steps

MAR  
2020

Public meetings on Park District and PDOC/Park Board process kickoff; Councilmember briefings

MAY  
2020

Park District Oversight Committee presents recommendations

JUN-AUG  
2020

Mayor's Office budget process and prioritization

AUG  
2020

Mayor transmits Proposed Park District 6-year spending plan to City Council in its role as the Park District Board

SEP-OCT  
2020

Park District Board review process (discussions and public hearing)

NOV  
2020

City Council Park District Board votes on 6-year spending plan and 2021 Park District budget



# Group Discussion

- Please select a table based on the topic you would like to discuss:
  1. **Serving more people at parks and centers and events**
  2. **Taking care of our system**
  3. **Building a city of the future**
- Please give time for everyone to speak
- We'll talk for 40 minutes and then share out with the larger group

*Instructions also available at your table.*



# All input is valuable

- Please make sure that all voices can be heard at your table conversation and be respectful of others' time.
- This is not a competition or a contest.
- We encourage folks to engage online, via email, and at our community meetings.
- If you'd like to follow up, take an info card or follow up with a staff person after the meeting.



# Thank You!

More comments? Email us at [PDPlanning@seattle.gov](mailto:PDPlanning@seattle.gov)

