

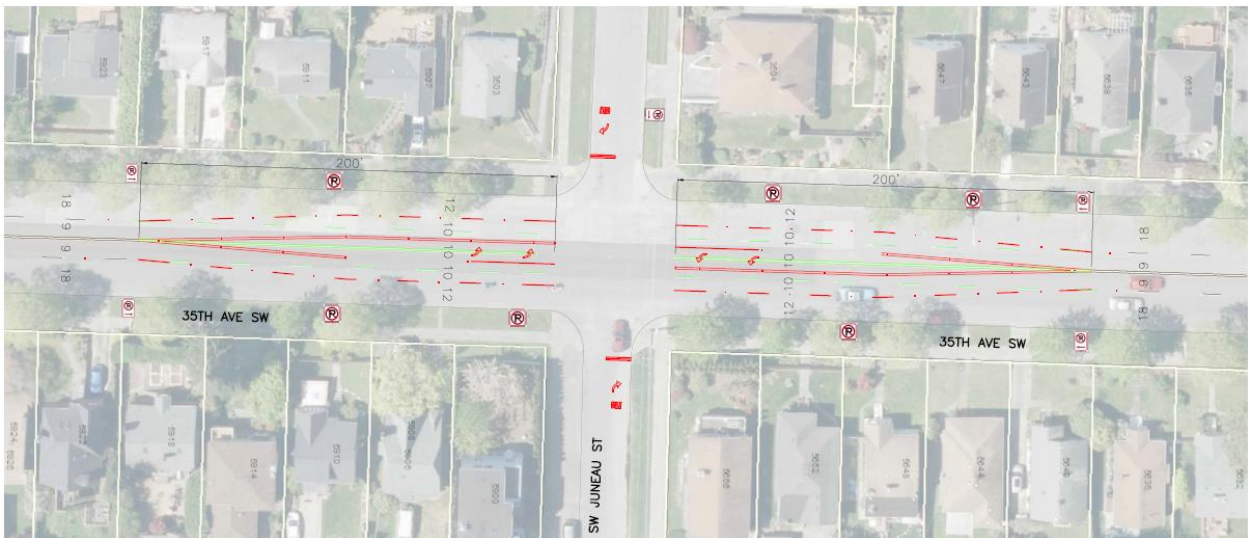
July 24, 2018

SUBJECT: TRANSPORTATION CHANGES COMING TO 35TH AVE SW AND SW JUNEAU ST

Dear Resident,

The 35th Ave SW Safety Corridor Project is currently in Phase 2 and we're excited to continue installing safety enhancements. As you may already know, this project addresses one of the top streets in Seattle for serious crashes and will enhance accessibility to destinations in the neighborhood. After the Phase 1 redesign, speeding dropped by an average of 42%. As soon as the end of July, we'll implement operational changes at 35th Ave SW and SW Juneau St. The upgrades include:

- Turn restrictions at SW Juneau St
- Left turn lanes along 35th Ave SW.
- No Parking signs will be installed to make room for the turn lanes (see the graphic below for exact locations of future signs) and where restrictions will occur



The mailer included was sent to residents and businesses in the project area April 2018 and has more information about the project. Please contact the 35th Ave SW Safety Corridor Project outreach team at (206) 512-3950 or 35thAvePaving@seattle.gov with questions and concerns regarding these operational changes.

Best,

Dawn Schellenberg