



Lower SW Spokane St to be Repaved Updated for Work Scheduled for Week of August 8, 2016

The Seattle Department of Transportation (SDOT) will start work next week to repave, reconstruct sidewalks and curb ramps, and make other improvements along SW Spokane St from SW Klickitat Way to E Marginal Way S to improve safety for all users. Construction is expected to last approximately 3 months. See details below for work scheduled over the next two weeks.

WORK PLANNED FOR THE WEEK OF AUGUST 8, 2016

(See map for details - highlighted in orange)

- Project wide activities
 - Surveying, staking, and layout
- SW Spokane St and 11th Ave SW Intersection
 - Saw cutting
 - Demolishing the southwest and southeast corners of the sidewalk
- SW Klickitat Way and Manning Street
 - Saw cutting
 - Demolishing the north side curb and sidewalk

WHAT TO EXPECT DURING CONSTRUCTION FOR THE WEEK OF AUGUST 8, 2016

- Weekday work hours from 9 AM to 4 PM
- Single lane closures and/or lane width reductions during work hours
- Noise, dust, and vibration typical of construction
- Access to businesses will be maintained
- Temporary pedestrian/bike pathway around work zone at southwest corner of SW Spokane St and 11th Ave SW

WORK PLANNED FOR THE WEEK OF AUGUST 15, 2016

(See map for detail - highlighted in yellow)

- SW Spokane St and 11th Ave SW Intersection
 - Signal improvements
- SW Klickitat Way and Manning St
 - Demolishing sidewalk and curbs on north and south sides and center islands
 - Forming and pouring curb, gutter, and sidewalk on north and south sides and center islands
 - Roadway asphalt patching

PLEASE NOTE THAT WORK PLANNED IS SUBJECT TO CHANGE

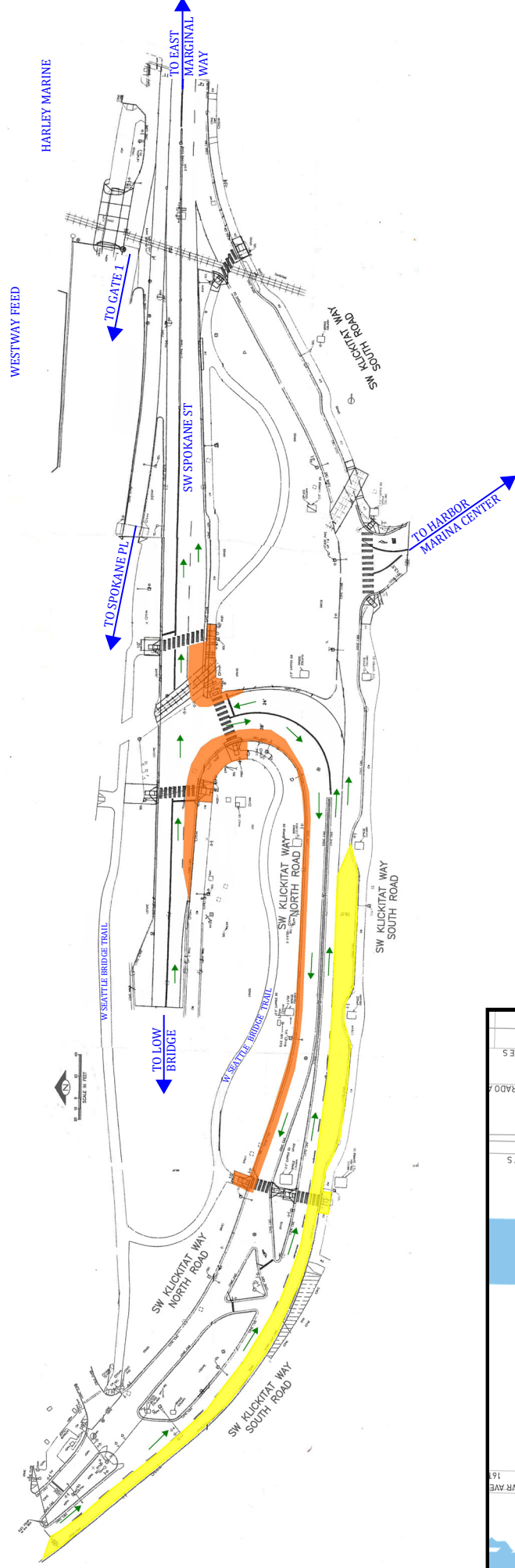
This project is funded by the 9-year Levy to Move Seattle, approved by voters in 2015. Learn more about the levy at www.seattle.gov/LevytoMoveSeattle.

PROJECT INFORMATION & CONTACT

www.seattle.gov.transportation/pave_spokane.htm
Paul Elliott, (206) 684-5321 or paul.elliott@seattle.gov
If you need this information translated, please call (206) 684-5321.



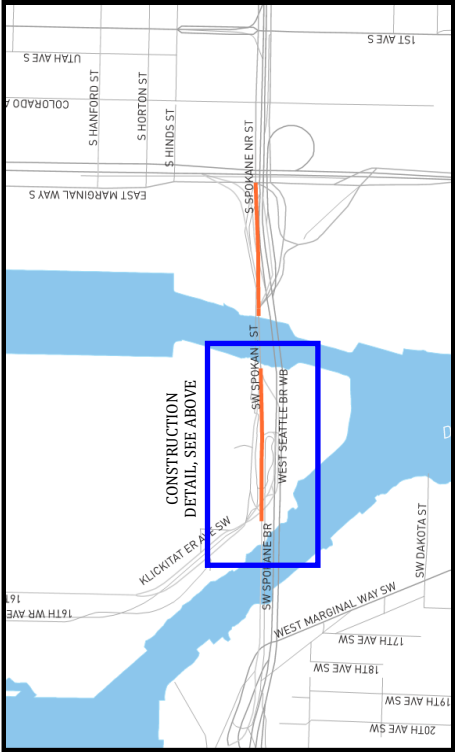
SPOKANE ST AAC TWO WEEK CONSTRUCTION LOOK AHEAD MAP



LEGEND

CONSTRUCTION ZONE (8/8-8/14)

CONSTRUCTION ZONE (8/15-8/21)



VICINITY MAP