



Lower Spokane St to be Repaved Update for Work Scheduled for Week of August 22, 2016

The Seattle Department of Transportation (SDOT) will start work next week to repave, reconstruct sidewalks and curb ramps, and make other improvements along SW Spokane Street from SW Klickitat Way to East Marginal Way S to improve safety for all users. Construction is expected to last approximately 3 months. See details below for work scheduled over the next two weeks.

WORK PLANNED FOR THE WEEK OF AUGUST 22, 2016

(See map for detail – highlighted in orange)

- SW Spokane St and 11th Ave SW Intersection
 - Signal Installation; including new conduit, handholes, and pedestrian poles.
- SW Klickitat Way and Manning Street
 - Forming and pouring replacement curb and gutter along edges of roadway.
 - Forming and pouring new curb ramps and replacement portions of sidewalk.
 - Roadway asphalt patching.
- SW Spokane St and Manning St
 - Reconstructing curb ramps and sidewalk on south side of Spokane St.
 - Trenching and storm drain installation on north side of Spokane St

WHAT TO EXPECT DURING CONSTRUCTION FOR THE WEEK OF AUGUST 22, 2016

- Weekday work hours from 9 AM to 4 PM
- Single lane closures and/or lane width reductions during work hours
- Noise, dust and vibration typical of construction
- Access to the port and businesses will be maintained
- Temporary pedestrian/bike pathway around work zone at SW corner of Spokane St and 11th Ave SW
- Temporary pedestrian/bike pathway around work zone on north side of Spokane St at Manning St

WORK PLANNED FOR THE WEEK OF AUGUST 29, 2016

(See map for detail – highlighted in yellow)

- SW Spokane St and Manning St
 - Construction of an elevated pedestrian crossing in West Seattle Bridge Trail through driveway on the north side of Spokane St at Manning St.

PLEASE NOTE THAT WORK PLANNED IS SUBJECT TO CHANGE

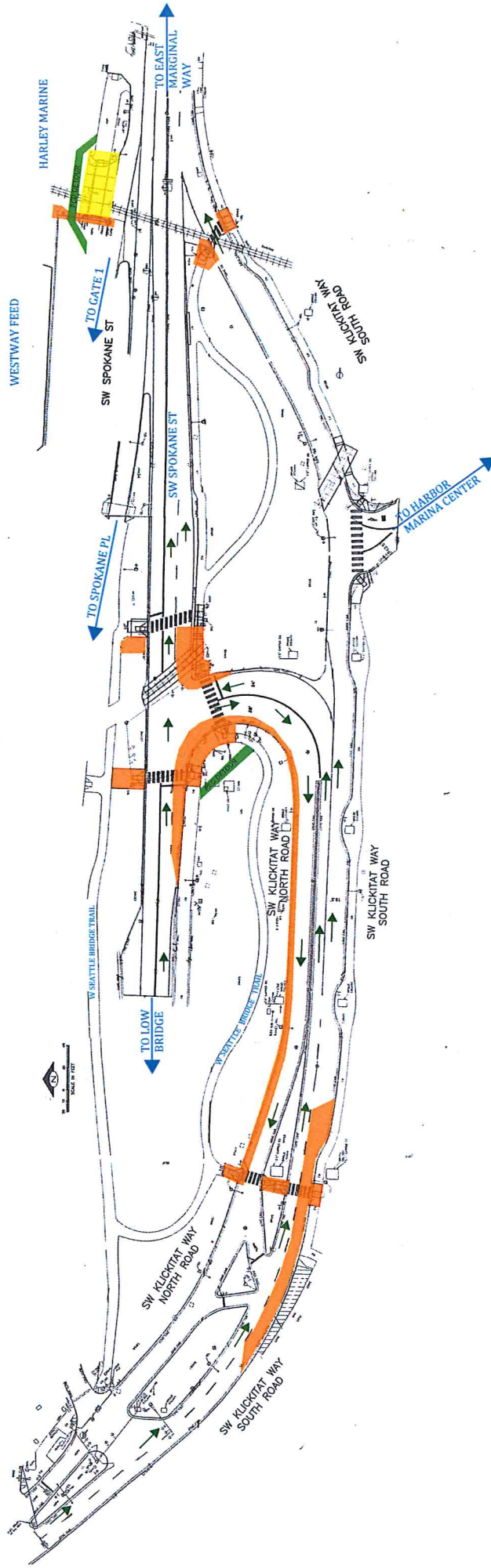
This project is funded by the 9-year Levy to Move Seattle, approved by voters in 2015. Learn more about the levy at www.seattle.gov/LevytoMoveSeattle.

PROJECT INFORMATION & CONTACT

www.seattle.gov/transportation/pave_spokane.htm
Paul Elliott, (206) 684-5321 or paul.elliott@seattle.gov
If you need this information translated, please call (206) 684-5321.



SPOKANE ST AAC TWO WEEK CONSTRUCTION LOOK AHEAD MAP



LEGEND

CONSTRUCTION ZONE (8/22-8/28)

CONSTRUCTION ZONE (8/29-9/4)

