



## CONSTRUCTION/CLASSIFICATION

Built by	Kaldnes, Norway
Year of construction	1982
Classification	DNV ✕ 1A1 General Cargo Carrier, EO, BIS DK(+), PL, PWDK, SBT
IMO number	8000977
Call sign (flag)	PJXY (Curacao)

## MAIN DATA

Length overall	180.96 m
Breadth moulded/max	32.26 m
Depth	13.30 m
Draft submerged at FPP/APP	19.64 / 21.65 m
Maximum draft	9.46 m
Deck Space [L x B]	126.60 x 31.66 m
Deadweight	32,650 t
Speed	16.00 kn
Total installed power	11,655 kW
Main Engines	1 x 9,630 kW
Main Propulsion	1 x 9,630 kW fixed propeller
Bow thruster	1 x 735 kW

## NAVIGATION EQUIPMENT

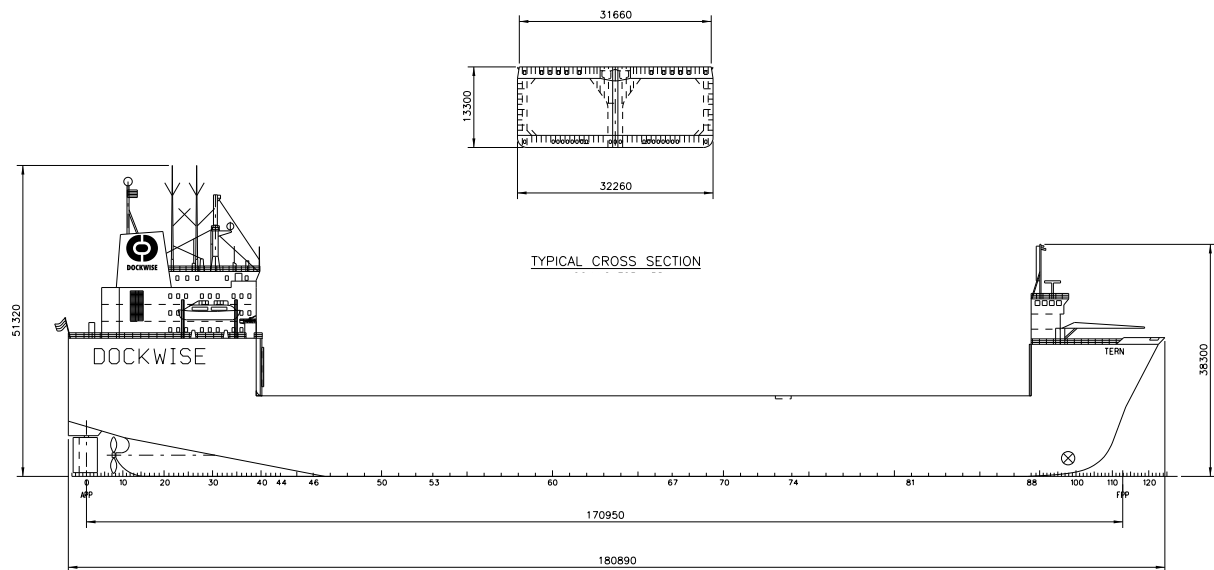
- Four radar, two ARPA coupled
- Two GPS navigators
- Two Echo sounders
- One Gyro compass
- One Electro magnetic log
- Bridges fore and aft
- SPOS – Ship Performance Optimisation System
- OCTOPUS - Octopus Onboard System (ship motion monitoring and decision support system by Amarcn)

## COMMUNICATIONS EQUIPMENT

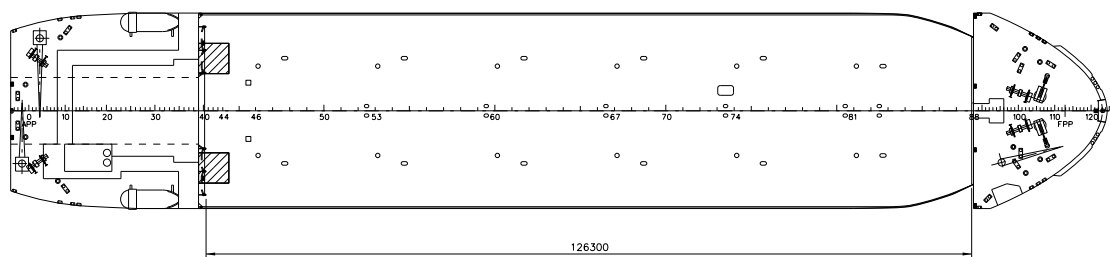
- Inmarsat B and C (telex/telephone/fax)
- VHF radio telephony
- Weather facsimile
- Watch receiver plus printer
- NAVTEX receiver
- GMDSS

## BALLASTING

- Three cargo pumps 1,000 m<sup>3</sup>/hr
- Two ballast pumps 500 m<sup>3</sup>/hr
- Three stripping pumps 75 m<sup>3</sup>/hr
- One heeling pump 950 m<sup>3</sup>/hr
- One cooling pump 950 m<sup>3</sup>/hr
- Two fire pumps 110 m<sup>3</sup>/hr



## SIDE VIEW



## TOP VIEW DECK LEVEL