

# SW Roxbury Street Road Safety Corridor



Feedback Session 2  
Project Manager Jim Curtin  
February 26, 2014, 6:00 pm to 7:30 pm

# SDOT's mission & vision

Mission: delivering a first-rate transportation system for Seattle.



Vision: a vibrant Seattle with connected people, places, and products.

# SDOT's values



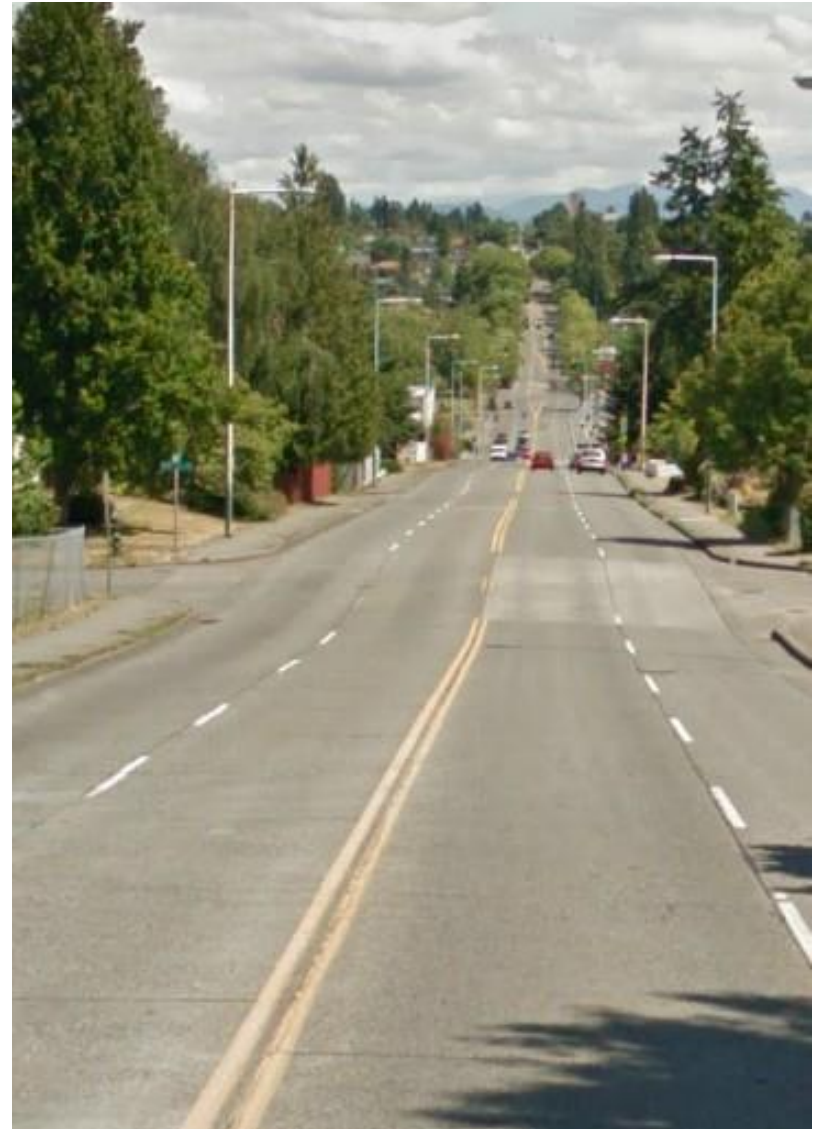
# Presentation overview

- Background
- Project area
- Existing conditions
- Early projects
- What we've heard so far
- Feedback session
- Next steps



# Background

- Safety improvements requested by Community Councils
- Data indicates high speeds and collision issues on Roxbury



SW Roxbury Street at 35<sup>th</sup> Avenue SW  
looking east

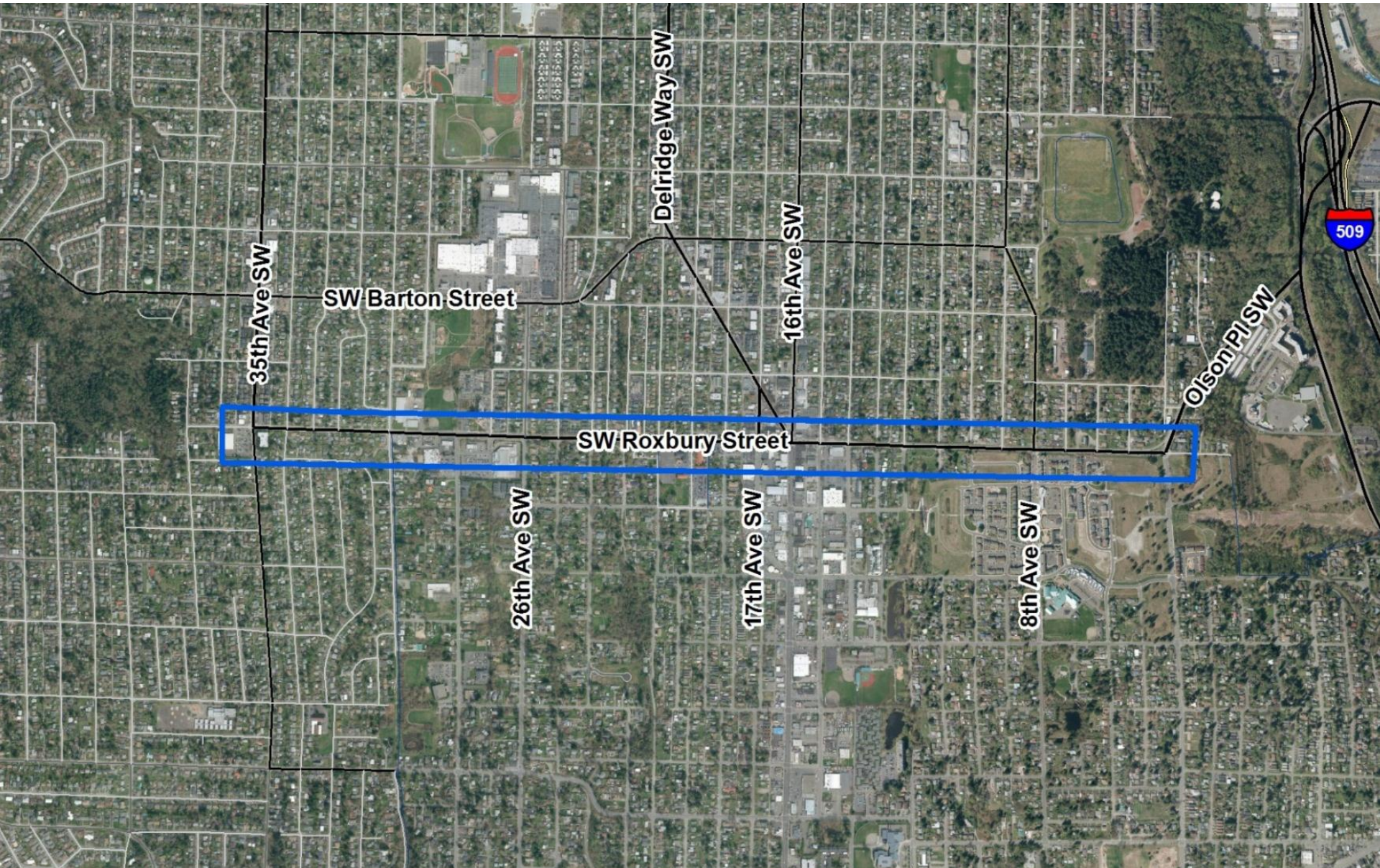
# Background

- Goal: improve safety for all
- Data-driven education, enforcement, and engineering efforts
- Short and long-term engineering solutions
- Many opportunities for community input
- Implementation late 2014 and 2015





# Project area





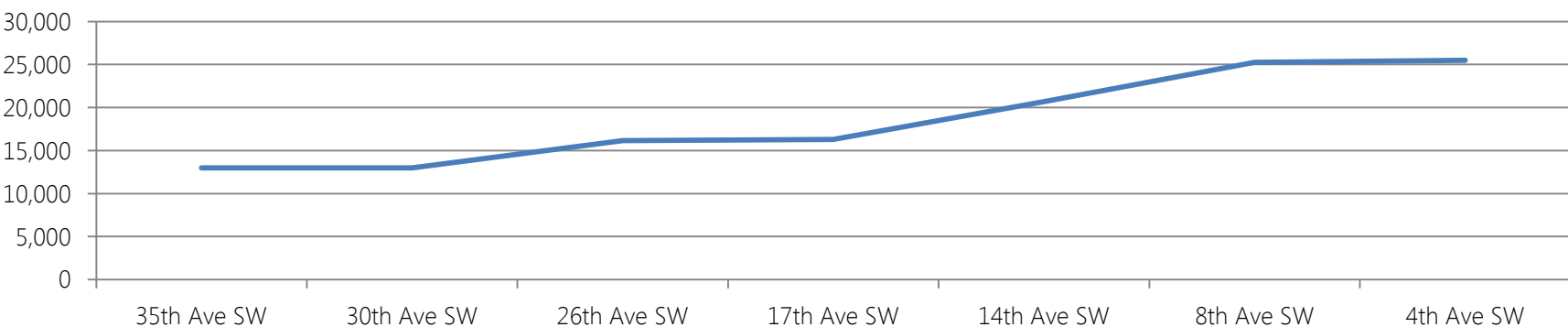
# Existing conditions

*SW Roxbury Street*

*Principal arterial classification*



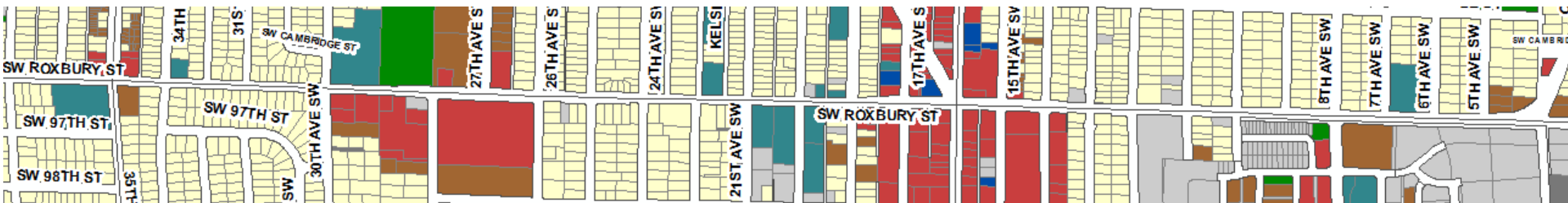
Average Daily Traffic





# Existing conditions

- Adjacent land uses
  - 153 parcels
  - 52% single family residential
  - 18% retail, office, industrial
  - 3 schools, parks, open space
- White Center/Westwood Urban Village
- Served by 10+ transit routes



# Existing conditions

## Collisions

- 223 total collisions last three plus years
- 112 injuries



### All Collisions - Last 3+ Years

- 1 - 4
- 5 - 7
- 8 - 12
- 13 - 16
- 17 - 22



# Existing conditions

## Pedestrian and Bicycle Collisions

- 11 pedestrian-vehicle
- 2 bicycle



Pedestrian Collisions



Bicycle Collisions

# Existing conditions

## Speeds

- 5+ mph over speed limit in most locations



34.4 mph/37.7 mph - 85th percentile speeds

Eastbound / Westbound



# Early projects

- Pavement repair
- Photo enforcement at
  - Roxhill
  - Holy Family
- Signage improvements



# What we've heard so far

- Improve the pedestrian environment
- Reduce the number of travel lanes on the western portion of the corridor
- Reduce speeding
- Review operations at several signalized intersections:
  - 8<sup>th</sup> Ave SW and Roxbury
  - 16<sup>th</sup> Ave SW/Delridge and Roxbury
  - 26<sup>th</sup> Avenue SW and Roxbury
  - 35<sup>th</sup> Ave SW and Roxbury
- Address pavement conditions in several locations
- Reduce speeds and collisions at the intersection of Roxbury, 4<sup>th</sup> Ave SW and Olson Pl SW





# Tonight – feedback session 2

- 6:30 PM – 7:30 PM
- Review our data
- Share your experiences and observations about SW Roxbury Street



# Next steps

March 1 10:00 AM – 2 PM	Feedback Session 3 and 4 White Center Summit <a href="http://www.wccda.org">www.wccda.org</a>
March 11	White Center Chamber
March – April	Business, school, and general community outreach
March – July	Early projects begin Design process underway
July	Design review meetings (to be announced)
August	Project implementation begins

# Questions?

jim.curtin@seattle.gov | (206) 684-8874

<http://www.seattle.gov/transportation/roxbury.htm>



# Thanks!

<http://www.seattle.gov/transportation>

