

Safe Pedestrian Crossings in Morgan Junction Neighborhoods

NSF application #2390879029

December 14, 2012

Safe Pedestrian Crossings in Morgan Junction Neighborhoods

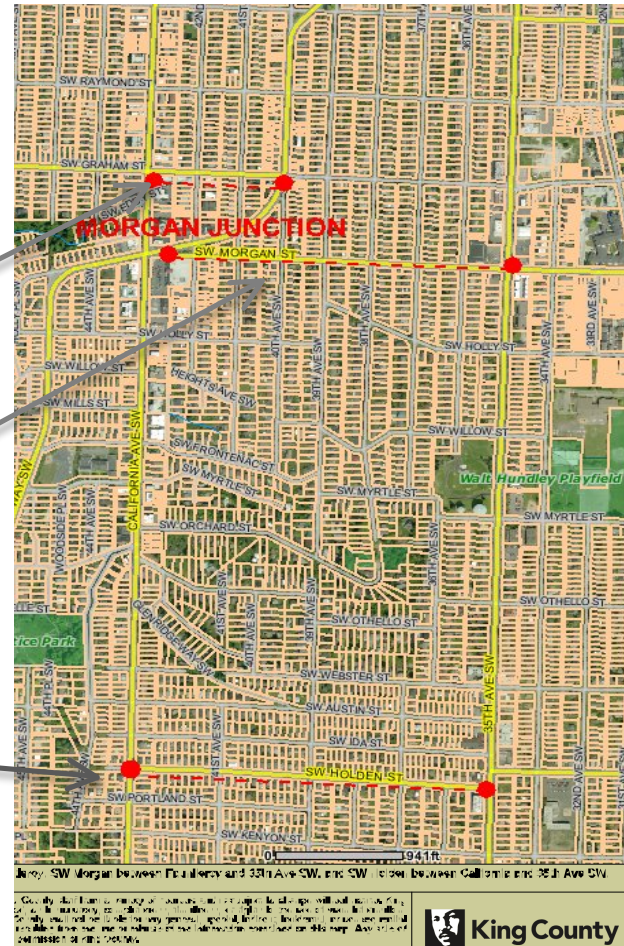
There are unsafe pedestrian conditions on portions of SW Graham, SW Morgan and SW Holden Streets, all of which are east-west arterial streets located between major north-south arterials of the Morgan Junction neighborhood.

These east-west streets are of particular importance as they lead to the BRT route, and are used by either people walking to or from the BRT as well as by drivers cutting through neighborhoods to avoid BRT route slowdowns.

Safe Pedestrian Crossings in Morgan Junction Neighborhoods

The NSF application concerns key intersections along the following streets:

- SW Graham Street from California Ave SW to Fauntleroy Way SW
- SW Morgan Street from 42nd Ave SW to 35th Ave SW
- SW Holden Street from California Ave SW to 35th Ave SW.

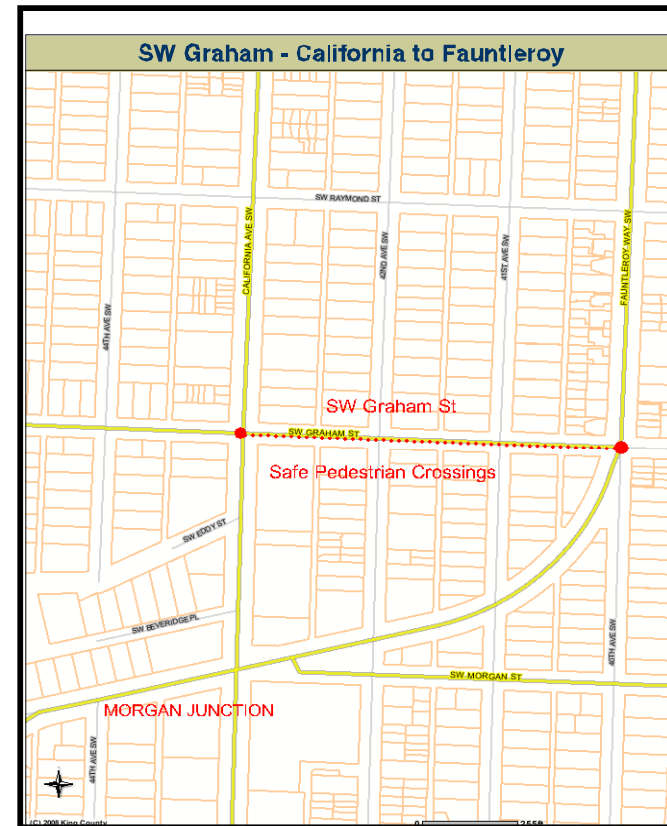


Safe Pedestrian Crossings in Morgan Junction Neighborhoods

SW Graham Street

from California Ave SW to Fauntleroy Way SW has:

- Poor site distance
- High vehicular speeds
- Missing curb ramps



Safe Pedestrian Crossings in Morgan Junction Neighborhoods

SW Morgan Street
from Fauntleroy Way SW
to 35th Avenue SW has:

- Steep cascading hills
- Poor site distance
- High vehicular speeds

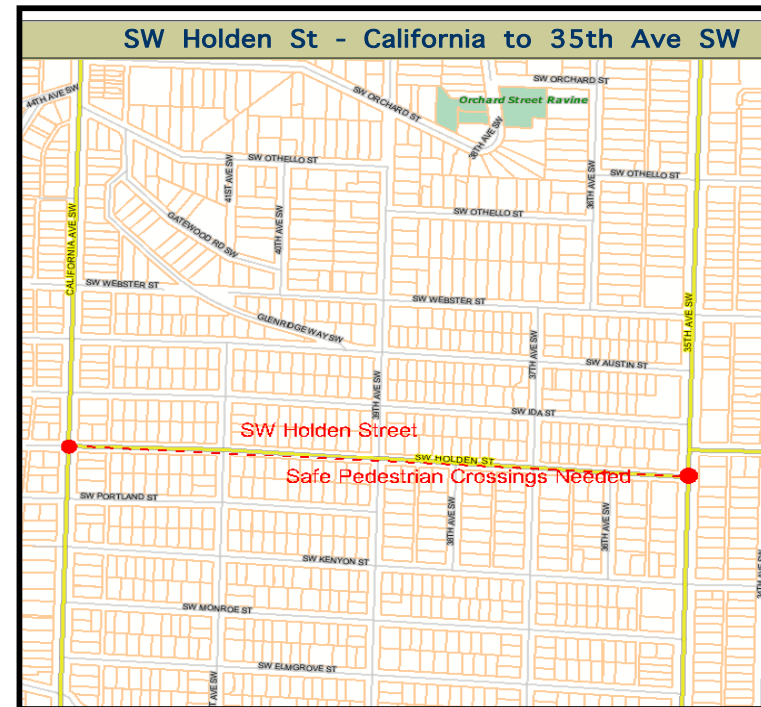


Safe Pedestrian Crossings in Morgan Junction Neighborhoods

SW Holden Street

from California Ave SW to 35th Ave SW has

- Poor site distance
- High vehicular speeds
- Wide roadway



Safe Pedestrian Crossings in Morgan Junction Neighborhoods

Each of these east-west arterials has a fairly wide roadway, and vehicular traffic tends to travel fairly fast, especially on the downhill segments.

Traffic speeds, roadway width , limited sight distance at the crest of the hills and inconsistent pedestrian related conditions make these arterials challenging for pedestrians to navigate."

Safe Pedestrian Crossings

Proposed Solutions

The proposed solution is to improve key intersections along these corridors with pedestrian-level improvements such as painted crosswalks, curb bulbs, ramps, pedestrian median refuges or pedestrian signals to facilitate safe pedestrian crossing. Note that this is a also specific recommendation in the Morgan Junction Neighborhood Plan."

Safe Pedestrian Crossings - January 28, 2009 MOCA Meeting Minutes

Steve Sindiong, Presiding. Cindi Barker, Chas Redmond, Eldon Olson – officers

4 guests: Veronica Abraham, Stan Locke, Tracy, Fauntleroy NA,

5 persons from neighborhood

Neighborhood Project Fund – 2009 requests

•Two fund sources are available: the Cumulative Reserve Fund (CRF) for maintenance or repair of existing structures implementing the neighborhood plan and the Neighborhood Street Fund for transportation-related projects. In 2008 applications, the sidewalk improvements adjacent the future Morgan Junction Park and the pedestrian improvements along Orchard Street leading to the Orchard Street Ravine Park were approved. The 2008 application project that was not funded will be our 2009 priority:

Pedestrian facility along west side of 44th Ave between Austin or Webster and stairwell to Solstice Park. Additional projects from the Neighborhood Plan that should be added to the CRF applications will be:

- 1. Reconfigure and channel Fauntleroy Way intersections, landscape unused street ROW and islands at 40th and Juneau/39th Ave SW, 45th /Holly Pl., Lincoln Park Dr.
- 2. Develop landscaped entryway in existing triangles on either side of Fauntleroy Way SW at Juneau.
- 3. Develop green spaces at SW Holly intersection with Fauntleroy and 45th
- 4. Improve California Ave SW streetscape with installation of landscaping and street trees.
- 5. Improve pedestrian crossing at intersections in business district along California Ave.
- 6. Improve pedestrian crossing at signalized cross-streets and bus stops along 35th Ave sw.
- 7. Pedestrian improvements to East-west streets including SW Graham, SW Morgan, and SW Holden.
- 8. Install traffic calming/control devices on SW Holly, 48th Ave, Frontenac & Myrtle, 38th Ave SW, Juneau, or 42nd Ave SW.

Safe Pedestrian Crossings in Morgan Junction Neighborhoods

NSF application # 2390879029

Thank you for your consideration