

Alaskan Way Viaduct Replacement Program



South Portal Working Group
Feb. 1, 2012

Meeting Objectives

- Review upcoming construction activities, schedules and potential impacts.
- Discuss how agencies are coordinating to minimize impacts.
- Provide us with feedback on ongoing and completed work.
- Share your perspective on upcoming construction activities and proposed mitigation techniques.
- Help us to distribute information to your groups and the broader community.

Meeting Guidelines

We ask that members of the working groups:

- Please attend all meetings.
- Represent your constituency rather than personal opinions.
- Remain open-minded.
- Commit to support a process that is open, iterative, and transparent, but that will ultimately lead to decisions by the four agencies.
- Provide updates to your community regarding the work of the group.

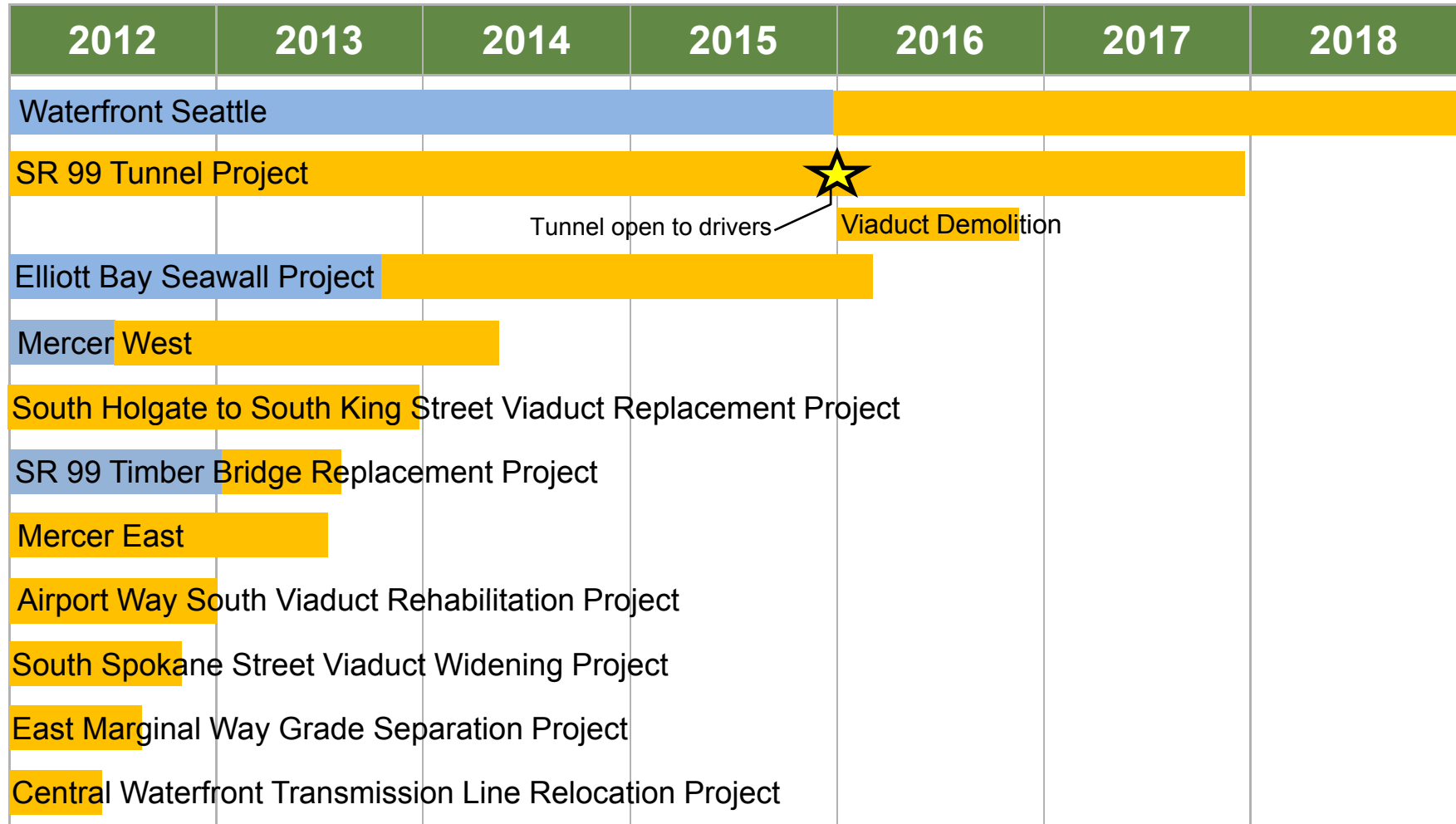
Overview of Alaskan Way Viaduct Replacement Program

Program Overview

The Alaskan Way Viaduct Replacement Program includes projects led by the Washington State Department of Transportation, City of Seattle, King County and Port of Seattle.



Program Timeline



 Design
  Construction

S. Holgate to S. King Street Project

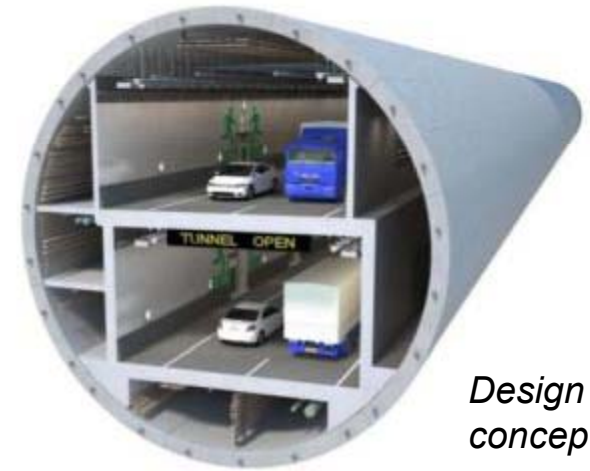


SR 99 Construction Bypass



SR 99 Tunnel

- Approximately two miles long.
- Two lanes with eight-foot safety shoulder in each direction.
- State-of-the-art safety systems.



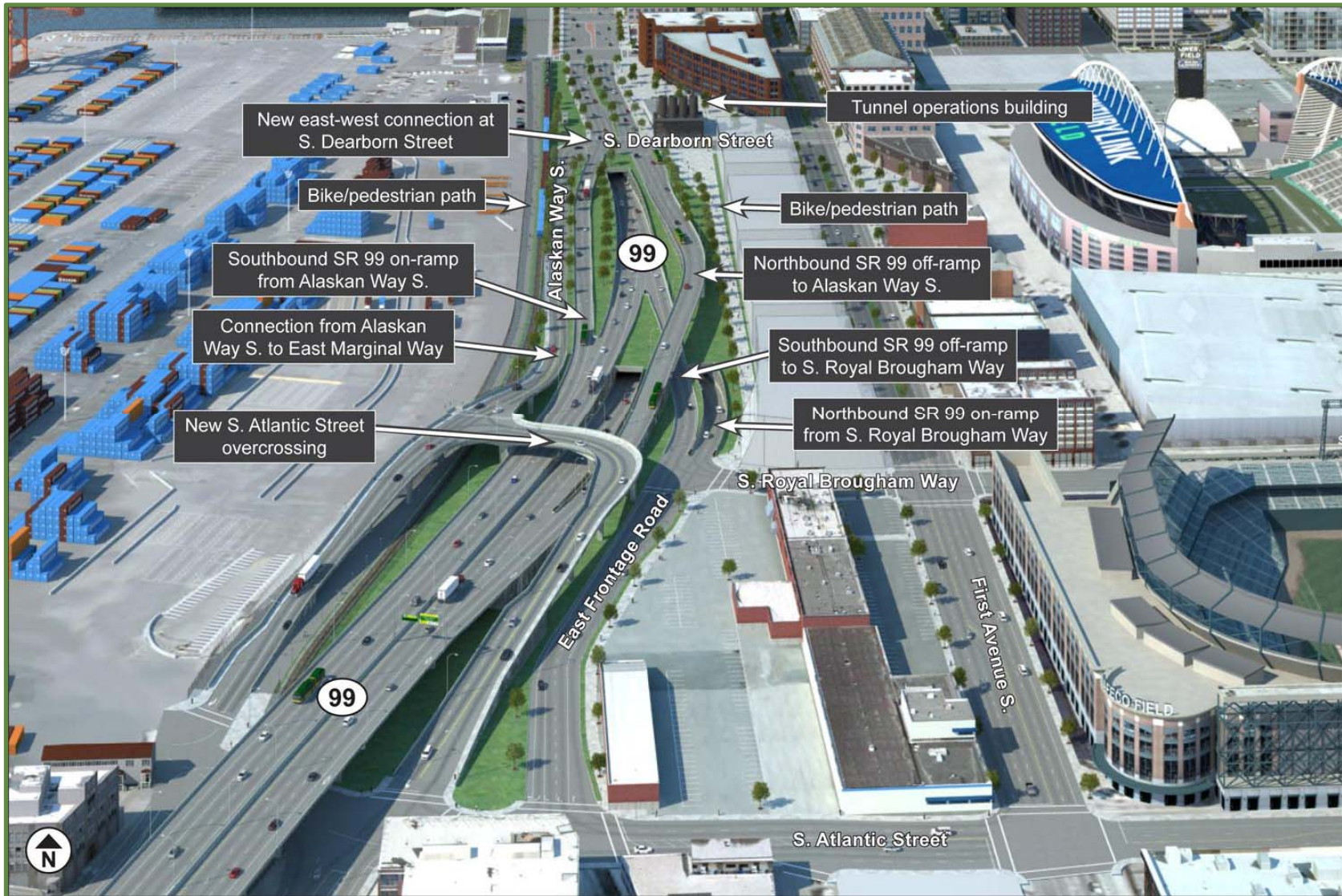
Design concept.



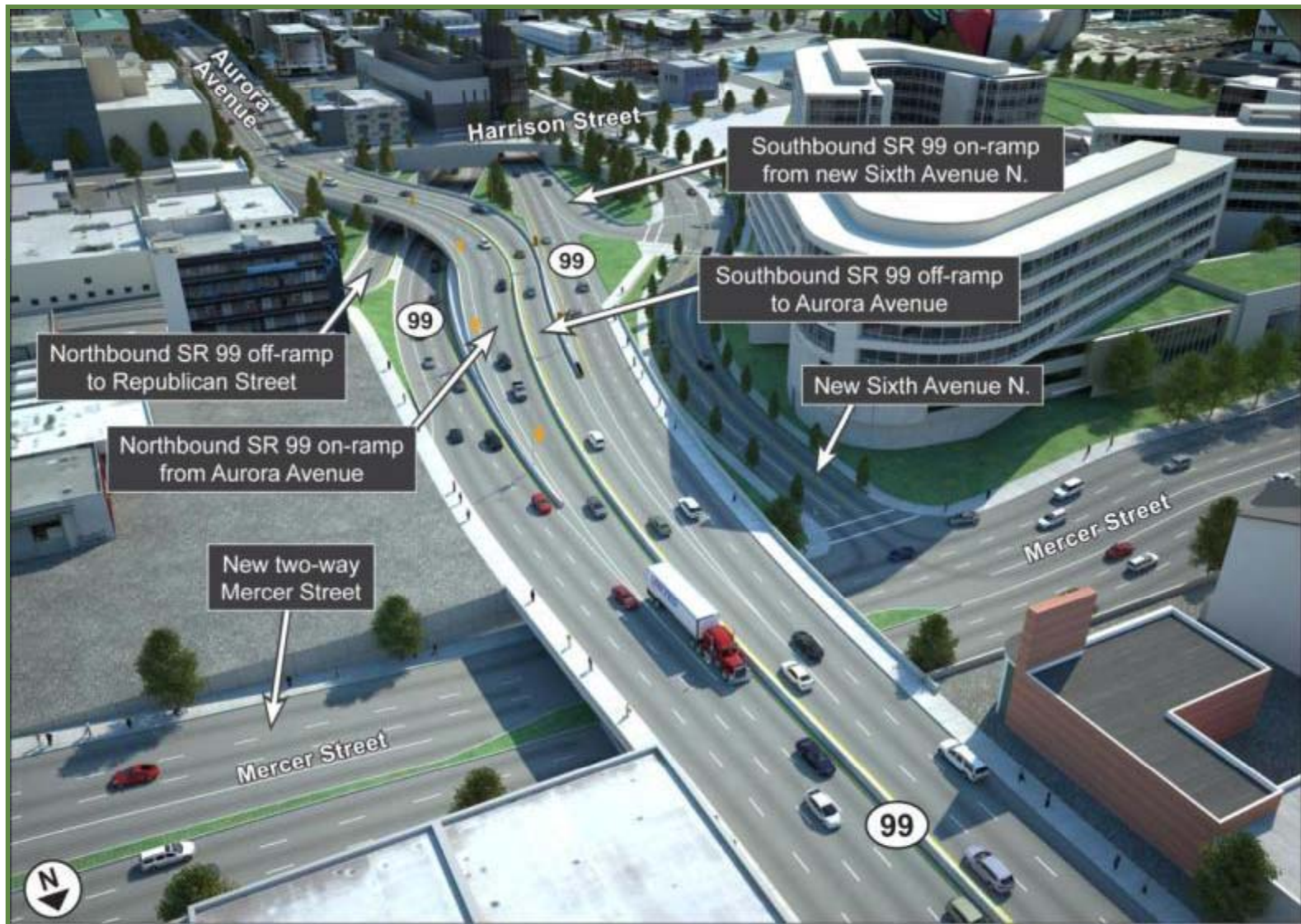
South Portal Design



South Portal Design



North Portal Design



Agency Coordination and Construction Overview

Agency Coordination

- Meet weekly with partner agencies, private contractors and stakeholders to coordinate construction closures.
- Update agency websites weekly with verified and consistent closure information.
- Provide coordinated construction information to the public.



Coordinated web tool showing waterfront access.

Working with the Community

- Meet and communicate regularly with project neighbors and stakeholders to coordinate the following:
 - Construction activities and related closures.
 - Parking impacts and mitigation strategies.
 - Bike impacts and detours.
 - Property-specific issues and concerns.
- Provide up-to-date information using inter-agency web tools, weekly emails and proactive media outreach.



Alaskan Way Viaduct Replacement Program



Coordinated Web Resources

The screenshot shows the Washington State Department of Transportation website. The main heading is "Alaskan Way Viaduct Replacement - Current Work". Below this, there is a paragraph of text: "Below is an overview of current construction activities for the Alaskan Way Viaduct Replacement Program, which includes state- and city-led projects. If you have questions regarding this work, call our hotline at 1-888-WAY-LINE (298-5463)." There are two highlighted boxes: "Driver information: Downtown/SODO closures | Seattle area traffic | City street traffic" and "Parking information: Our waterfront access map shows where program construction is affecting parking along the Seattle waterfront. Visit Your Spot is Here to find affordable parking options." A photo of the construction site is shown at the bottom. The left sidebar contains links for Program Info, Projects, and Multilingual Information.

Program Info

- Program Home
- Contact Us
- Contracting Opportunities
- Current Work
- Frequently Asked Questions
- Library
- Map
- Milepost 31
- Photos/Videos
- Public Events
- Timeline

Projects

- SR 99 Tunnel
- SR 99 South Holgate Street to South King Street
- Related projects

Multilingual Information

- 中文 - Chinese
- Español - Spanish
- Tagalog - Filipino
- Tiếng Việt - Vietnamese

Alaskan Way Viaduct Replacement - Current Work

Below is an overview of current construction activities for the Alaskan Way Viaduct Replacement Program, which includes state- and city-led projects. If you have questions regarding this work, call our hotline at 1-888-WAY-LINE (298-5463).

Driver information:
[Downtown/SODO closures](#) | [Seattle area traffic](#) | [City street traffic](#)

Parking information:
Our [waterfront access map](#) shows where program construction is affecting parking along the Seattle waterfront. Visit [Your Spot is Here](#) to find affordable parking options.

Last updated: Week of Jan. 23, 2012

South of downtown construction

Second SR 99 bridge
Crews are building foundations for the new northbound SR 99 bridge, which is being built in the footprint of the demolished viaduct. Visit the South Holgate Street to South King Street project [website](#) for details.

Current Work
www.alaskanwayviaduct.org



Transportation Construction Map
www.seattle.gov/transportation

North Portal Construction Simulation

North End Construction Overview



- A** Rebuild Mercer Street lanes
- B** Relocate utilities near north portal
- C** Mobilize construction crews at north portal
- D** Demolish building at 330 Sixth Avenue North

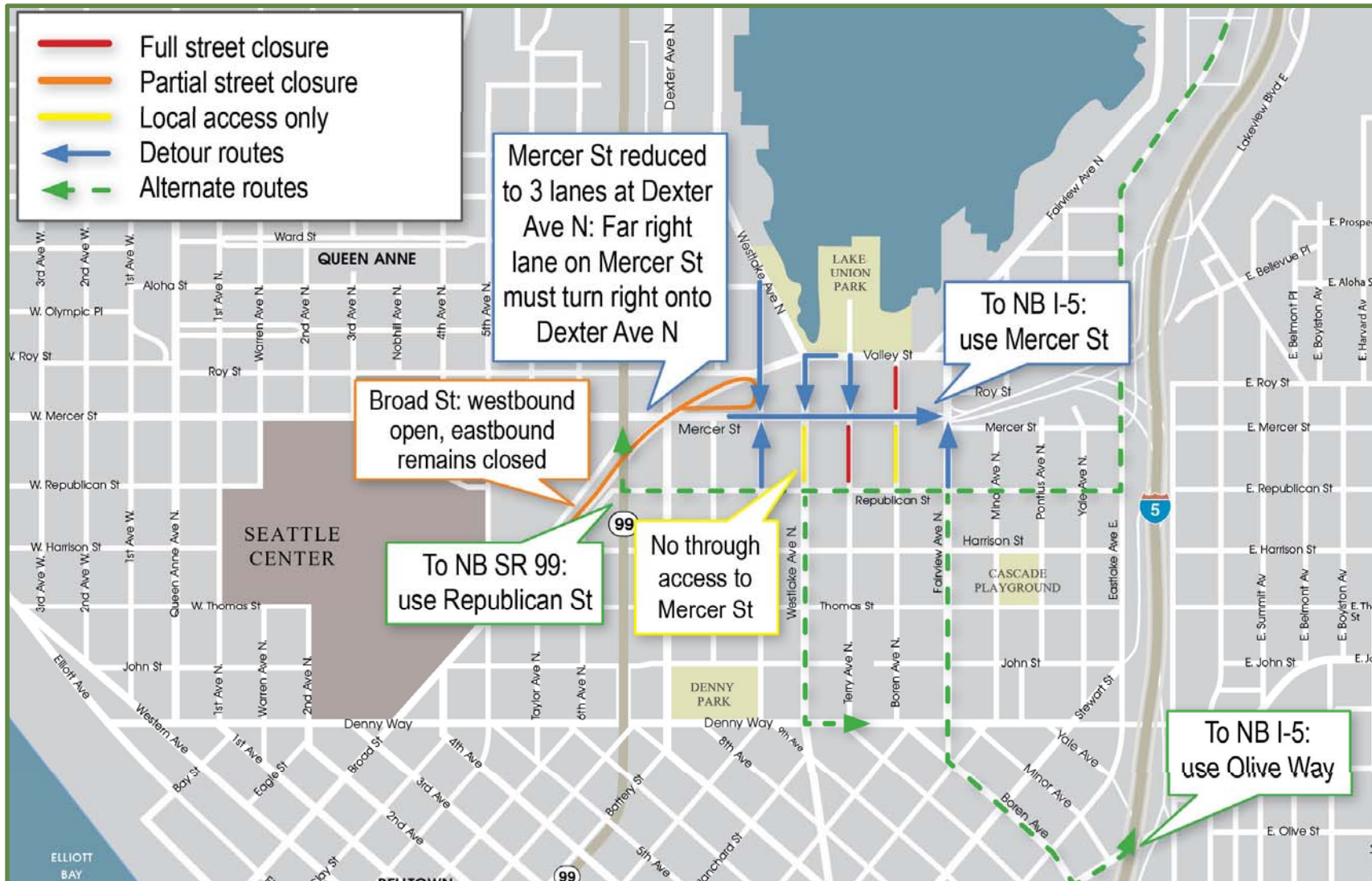
A

Rebuild Mercer Street Lanes

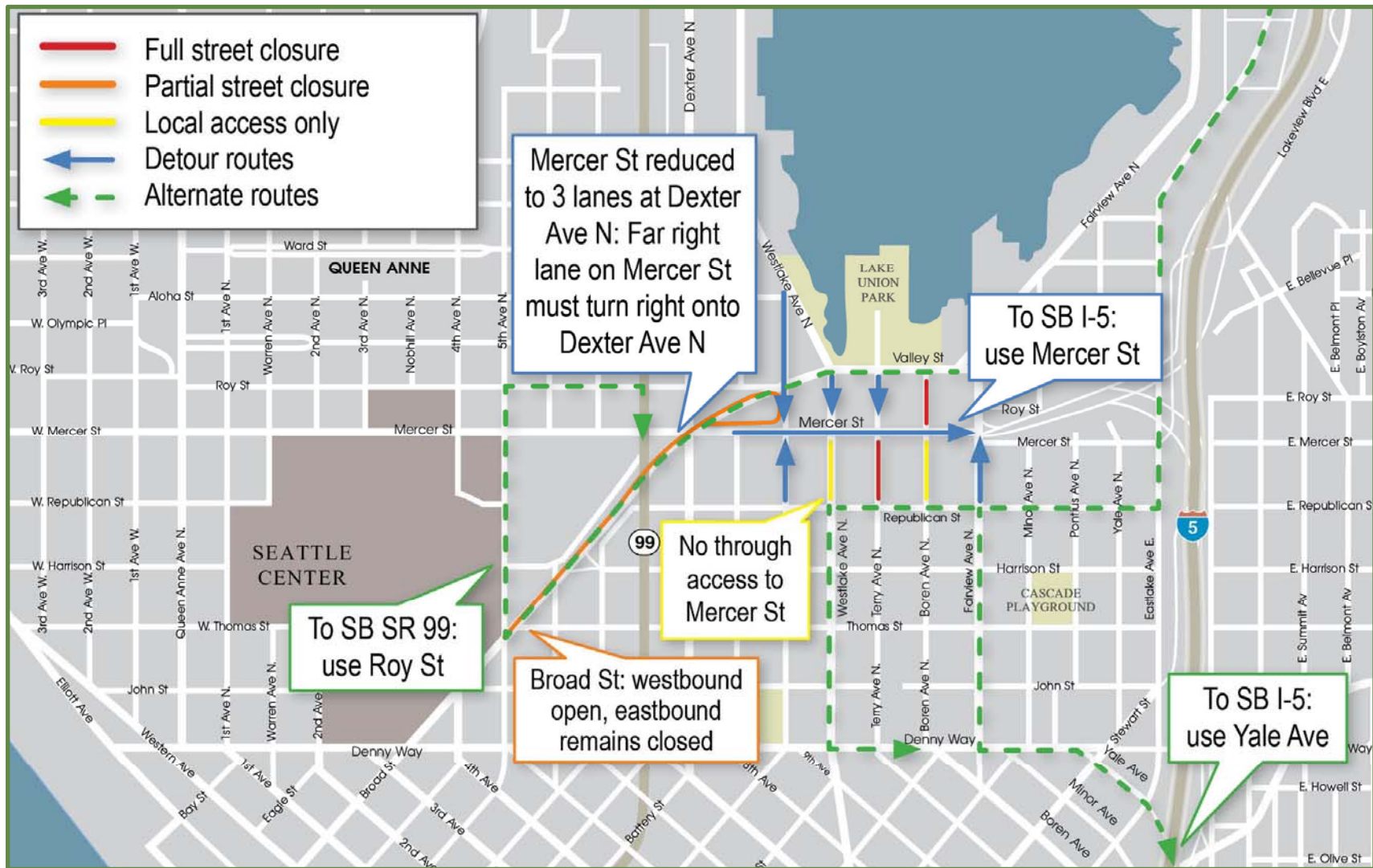


- January 2012 to late 2012.
- Eastbound traffic shifts to new Mercer Street lanes while crews rebuild existing lanes.
- Access to Mercer Street closed from the south at Terry and Boren avenues, and either Westlake or Ninth avenues.
- Some access restrictions on Fairview Avenue North between Mercer and Harrison streets.

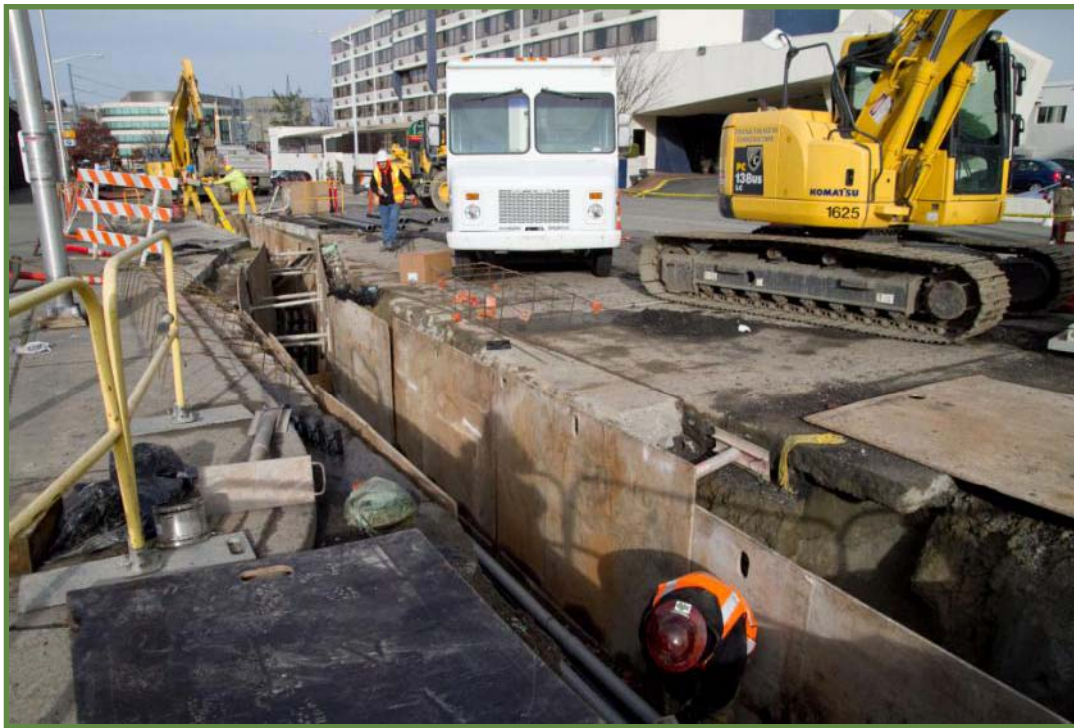
A Detour to Northbound I-5



A Detour to Southbound I-5



B Relocate Utilities Near North Portal



- December 2011 to December 2012
- Current work will require intermittent lane closures and temporary parking restrictions on Taylor Avenue North, John Street and Aurora Avenue North.

© Mobilize Construction Crews at North Portal



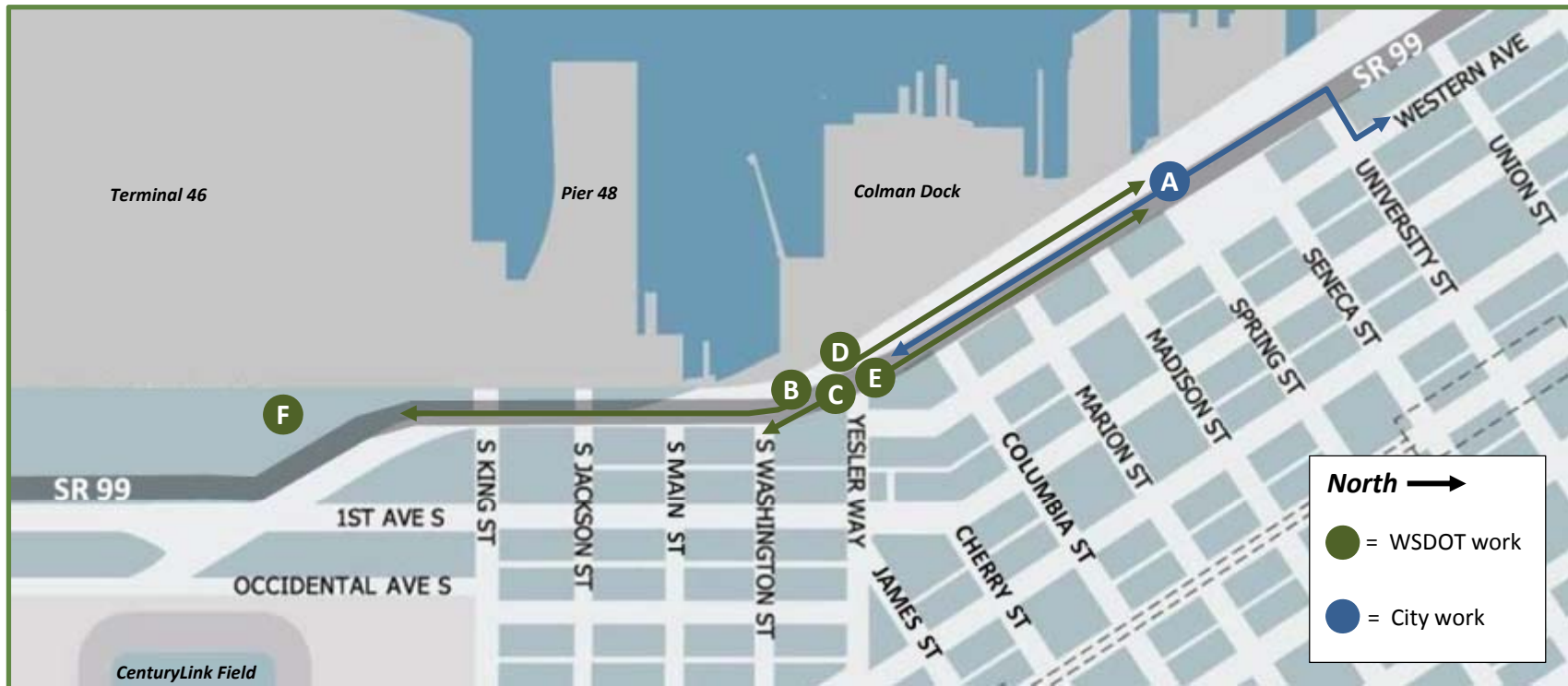
- No current SR 99 or city streets closures.
- Excavation work for tunnel boring machine receiving pit will begin early summer 2012.

D Demolish Building at 330 Sixth Avenue North



- Demolition begins early 2012.
- No current SR 99 or city streets closures.

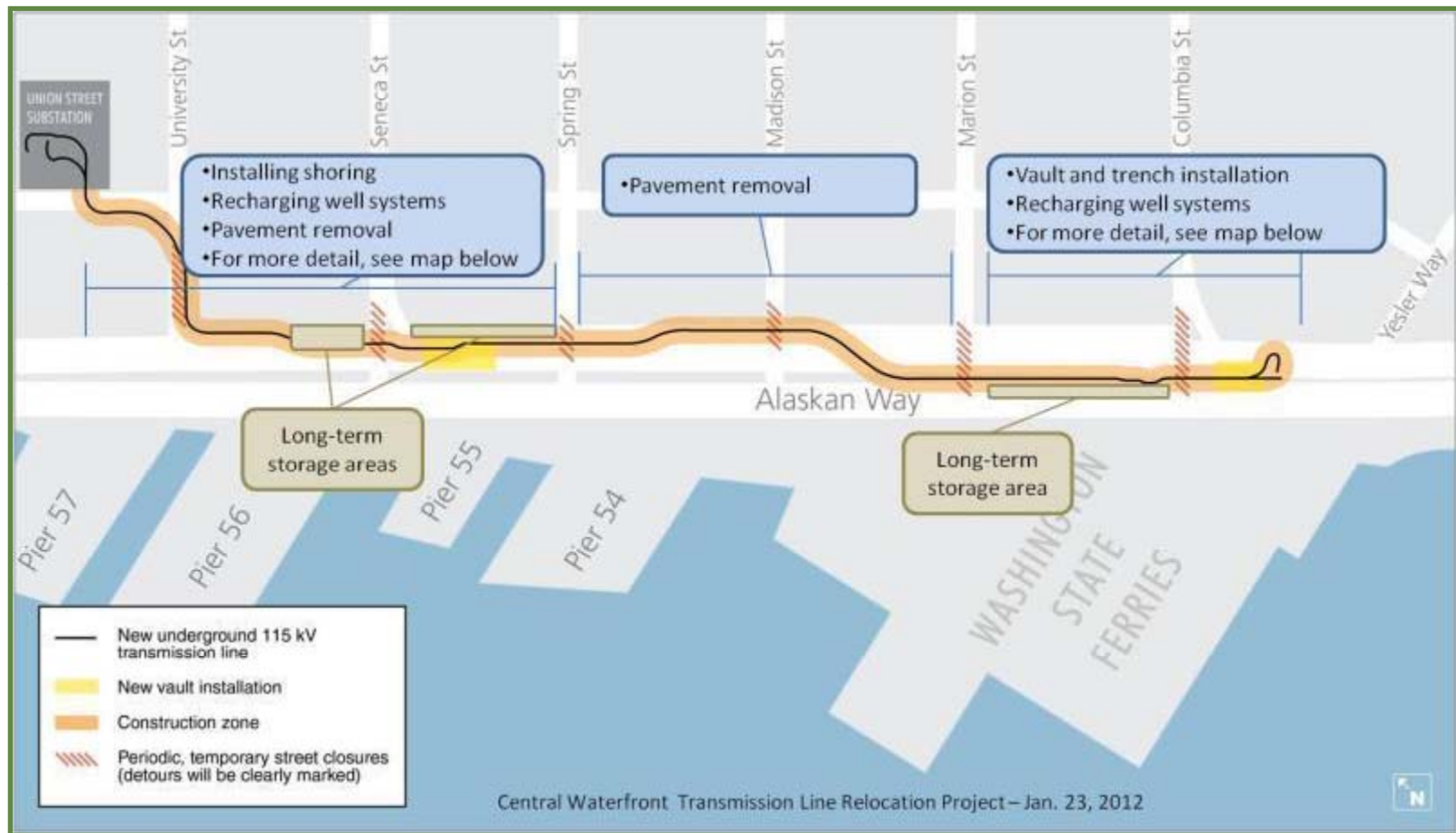
Central Waterfront Construction Overview



- A** Relocate utility lines along waterfront
- B** Relocate utility lines south of Yesler Way
- C** Viaduct strengthening and micropile installation
- D** Widen Alaskan Way between Yesler Way and Spring Street

- E** Build new Alaskan Way detour under the viaduct
- F** Build SR 99 tunnel launch pit

A Relocate Utility Lines Along Waterfront



- Project complete in April 2012.
- Intermittent closures on side streets. Alaskan Way remains open.

B Relocate Utilities South of Yesler Way



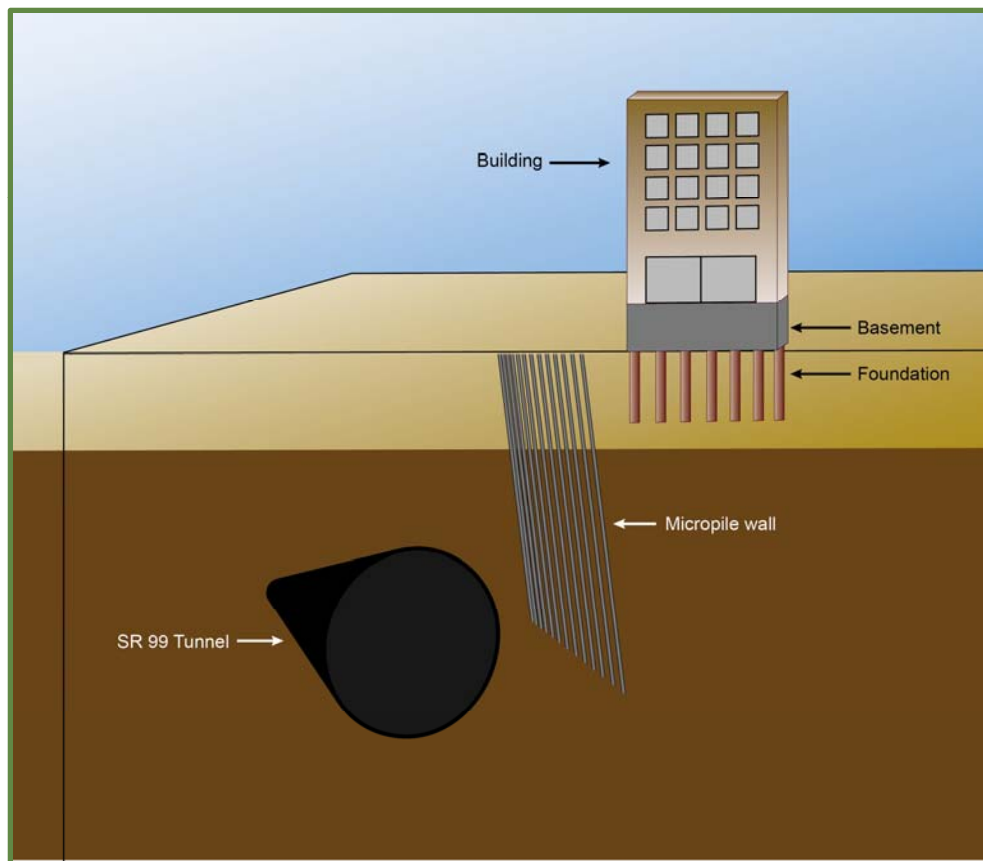
- January to December 2012.
- Road under the viaduct between South Main Street and Yesler Way closed through May 2012.

© Viaduct Strengthening



- March to August 2012.
- Crews will reinforce sections of the viaduct to withstand limited settlement due to tunneling.
- Road under the viaduct between South Main Street and Yesler Way closed through May 2012.

© Micropile Installation



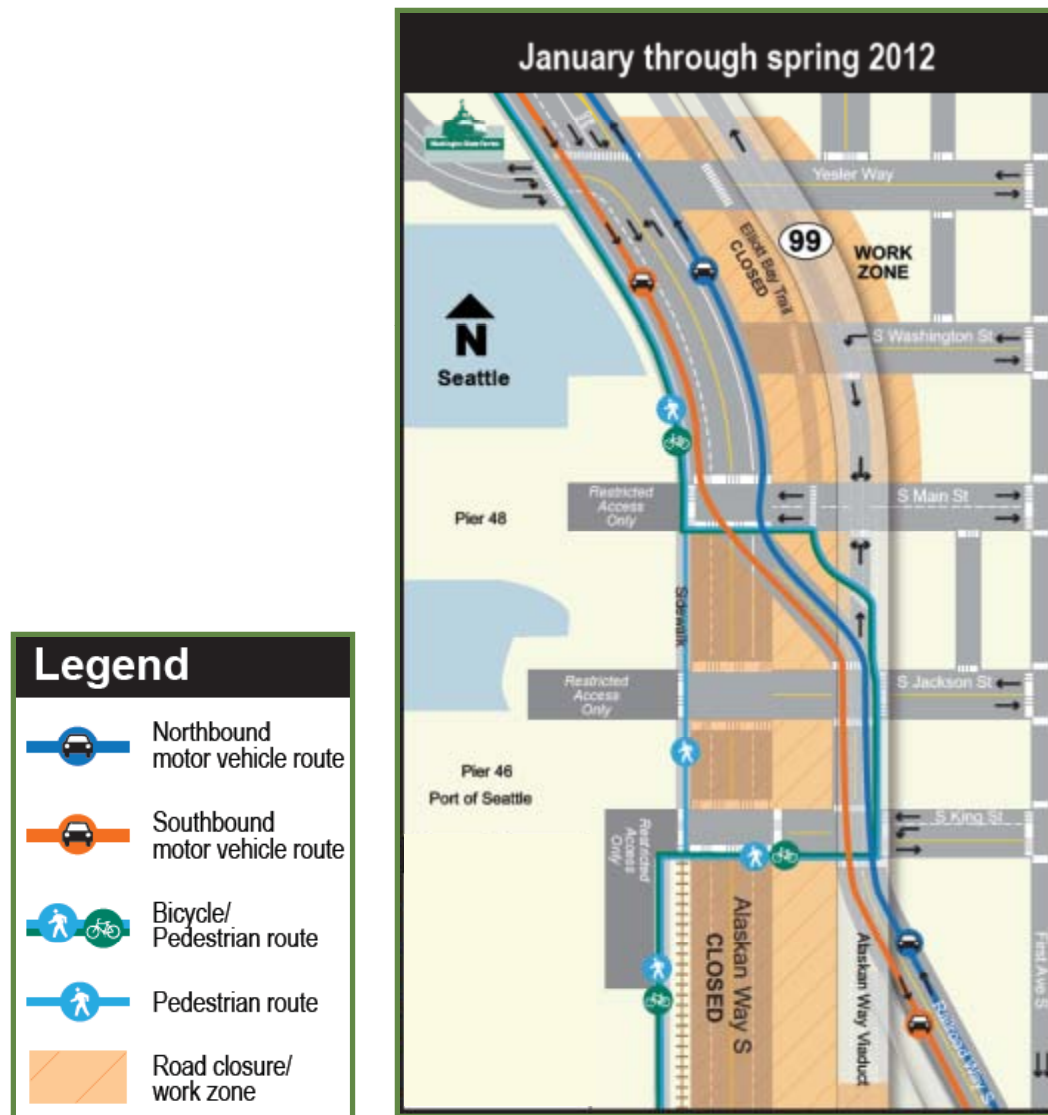
- February to June 2012.
- Crews will install a row of steel pipes to limit ground movement during tunneling.
- Road under the viaduct between South Main Street and Yesler Way closed through May 2012.

D Widen Alaskan Way



- March to April 2012.
- Intermittent overnight and weekend lane closures.

E Alaskan Way South Detour



- Current detour opened January 2012.
- Alaskan Way South closed from South Atlantic to South Main streets.
- Parking removed under the viaduct between South King and South Main streets.

E

Alaskan Way Detour

May 2012 through 2013



- New detour opens in May 2012.
- Alaskan Way South closed from South Atlantic Street to Yesler Way.
- Road under the viaduct closed in stages between South Main and Spring streets.

F Build SR 99 Tunnel Launch Pit



- January 2012 to mid-2013.
- Initial work includes installing piles for launch pit support walls.
- No current SR 99 or city street closures.

South Portal Construction Simulation

South End Construction Overview



A Relocate utilities

B Build second SR 99 bridge and South Atlantic Street overcrossing

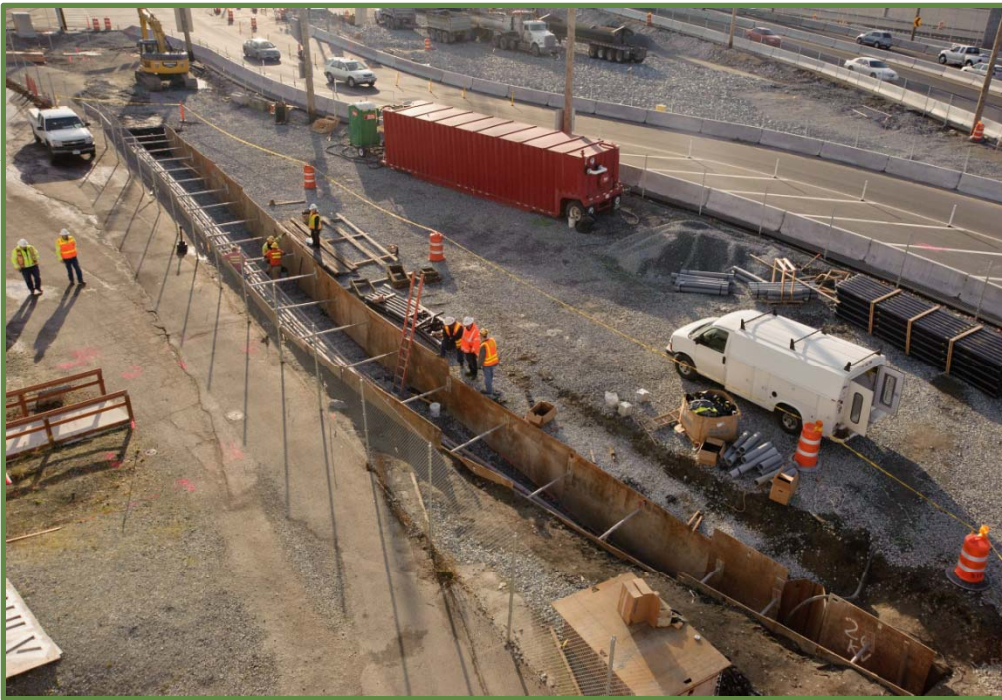
C Rebuild East Marginal Way South roadway and sidewalk

D Rebuild roadway on South Spokane Street viaduct

E Rebuild Airport Way South viaduct

F Finish East Marginal Way overcrossing

A Relocate Utilities Near South Royal Brougham Way



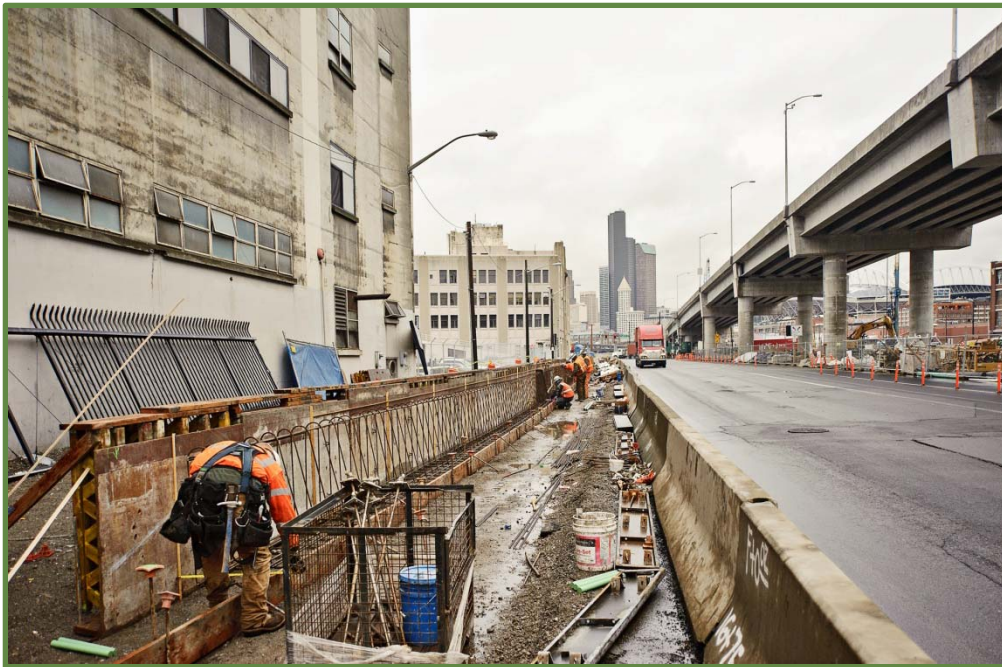
- February to December 2012.
- Intermittent overnight lane closures on northbound on-ramp to SR 99 at South Royal Brougham Way.

B Build Second SR 99 Bridge



- November 2011 to mid-2013.
- South Atlantic Street overcrossing work begins summer 2012.
- Several overnight closures of SR 99 anticipated later this spring.

© Rebuild East Marginal Way South



- December 2011 to spring 2012.
- Lane reductions between South Atlantic and South Massachusetts streets.
- Bicycle and pedestrian traffic detoured to shared-use path on east side of street.

C Bicycle and Pedestrian Detour

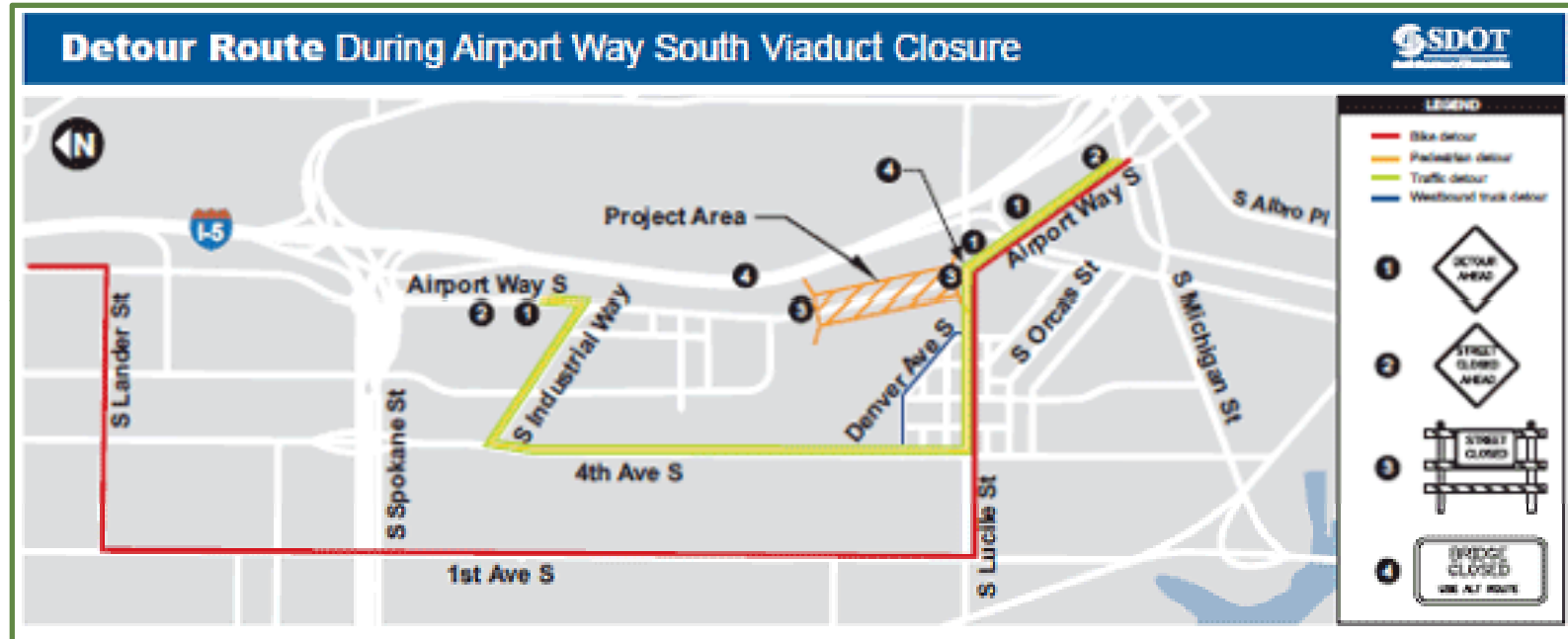


D Rebuild South Spokane Street Viaduct



- Westbound traffic was shifted to new bridge deck in December.
- Additional traffic shifts will be implemented in the coming months in order to finish the project.
- Combined westbound on / off ramp at First Avenue South projected for spring completion, although on-ramp portion not expected to open until summer.
- Substantial project completion currently expected this summer.

E Rebuild Airport Way South Viaduct



- November 2011 to early 2013.
- Current work includes removal of main span girders and demolition of bridge approach.
- Airport Way South closed between South Lucile and South Edmunds streets.

F East Marginal Way Overcrossing



- Project will be complete in February 2012.

Alaskan Way Viaduct Replacement Program



Website:

www.alaskanwayviaduct.org

Email:

viaduct@wsdot.wa.gov

Hotline:

1-888-AWV-LINE