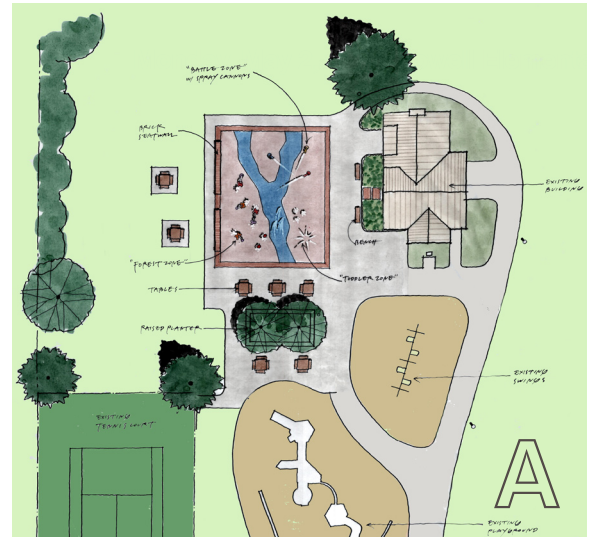


OPEN HOUSE IN THE PARK

Highland Park Spraypark - Seattle, WA

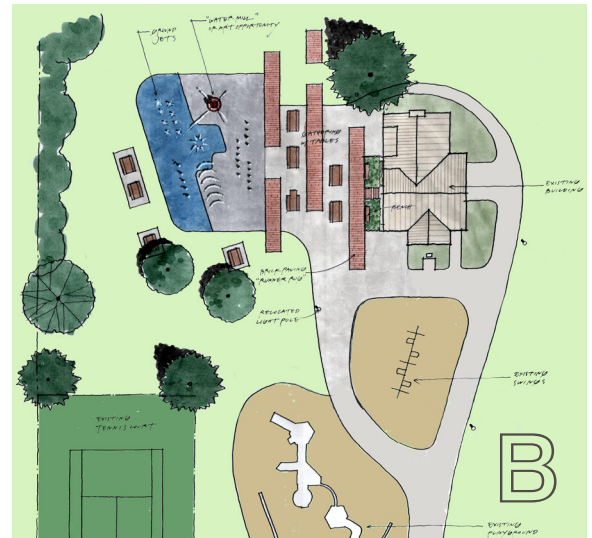
CONCEPT A

Concept 'A' refers to Highland Park's natural and cultural history. The spraypark "courtyard" references the area's industrial history as a brickyard with brick inlaid borders and seatwalls. Paving patterns suggest landforms attributable to the Duwamish waterway. Spray areas are arranged in three zones: a battle zone with spray cannons, a forest zone with overhead tree-like features and the toddler zone with ground sprays. Spatially, Concept 'A' uses a small footprint and a gathering court to tightly knit the spray area, building and existing playground into a unified place.



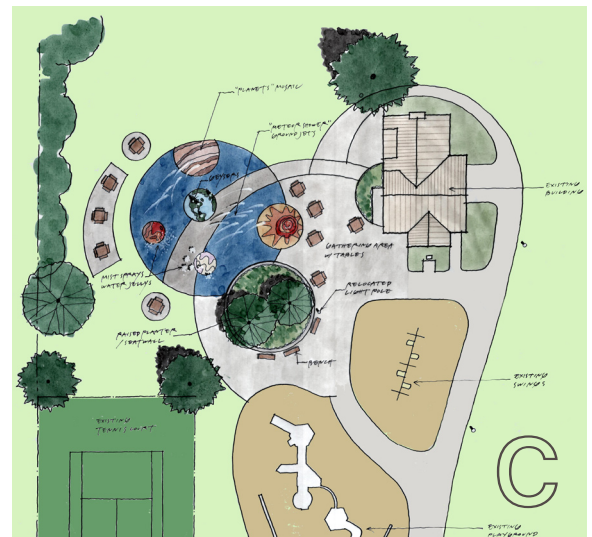
CONCEPT B

Concept 'B' celebrates the WPA era building - in its history as well as its current form and future life. Brick 'carpets' within the gathering area connect the building to the spray area, which features an iconic spray element speaking to Highland Park's unique neighborhood character. The big presence of this feature is offset by interactive groundsprays oriented along the Duwamish 'waterfront'. With such strong connections between the spraypark and the building, the lawn area between the existing play area is open and flexible for multiple uses.



CONCEPT C

In contrast to the other concepts, Concept 'C' reflects outward, beyond the local context. In referencing the sky and solar system, this concept playfully engages users in other-worldliness. Spray features represent shooting stars, earthly eruptions, Jupiter's cool fog, and the like. The paving might include mosaics or slight topographic changes to enhance the off-season use. The generous gathering plaza wraps a central stormwater planter and connects each area, providing ample seating and flexible off-season use.



OPEN HOUSE IN THE PARK

Highland Park Spraypark - Seattle, WA

The Highland Park spraypark is located adjacent to an existing playground and WPA era building. The existing wading pool will be replaced, but the location and form of the new spraypark is to be determined. This is the second in a series of three community meetings that will explore park development options and help realize the site's potential. The intent for the Highland Park spraypark is that it will reflect the identity and character of the neighborhood. Your input and support are essential to this process and to the success of the project. Please take a moment to review the proposed designs and provide the design team with your important feedback.

Questions to consider while you review the concepts:

- 1) What *elements* do you like the MOST in each concept?
- 2) What *elements* do you like the LEAST in each concept?
- 3) Which concept appeals to you the most? Why?
- 4) Is the site's history an important factor in the design?
- 5) Is the incorporation of art into the spraypark important to you? Do you have any ideas for art?

How to Make Contact with the Project

It's your park! Tell us what you want it to be, make comments about the proposed designs or just plain stay in touch with current developments:

Seattle Parks Project Manager: Kelly Goold
email: kelly.goold@seattle.gov
phone: 206.684.0586
website: http://www.seattle.gov/parks/projects/highland_park/pg_spray.htm

Next Steps

Comments from the concepts shown today will be incorporated into a Preferred Concept and shared at the third community meeting. (Date to be determined.) The next phase, called Design Development will add detail to the Preferred Concept and take us one step closer to construction. Please continue to stay involved and tell us what you think!

